


Anti-Lgi4 antibody ab115305

画像数 4

製品の概要

製品名	Anti-Lgi4 antibody
製品の詳細	Rabbit polyclonal to Lgi4
由来種	Rabbit
アプリケーション	適用あり: WB, IHC-P
種交差性	交差種: Human 交差が予測される動物種: Mouse, Rat 
免疫原	14 amino acid synthetic peptide from near the center of Lgi4 (Human)
ポジティブ・コントロール	Human Brain Cerebellum, Heart and Skeletal Muscle tissue; Human brain tissue lysate
特記事項	<p>The Life Science industry has been in the grips of a reproducibility crisis for a number of years. Abcam is leading the way in addressing this with our range of recombinant monoclonal antibodies and knockout edited cell lines for gold-standard validation. Please check that this product meets your needs before purchasing.</p> <p>If you have any questions, special requirements or concerns, please send us an inquiry and/or contact our Support team ahead of purchase. Recommended alternatives for this product can be found below, along with publications, customer reviews and Q&As</p>

製品の特性

製品の状態	Liquid
保存方法	Shipped at 4°C. Store at +4°C short term (1-2 weeks). Store at -20°C or -80°C. Avoid freeze / thaw cycle.
バッファー	pH: 7.4 Preservative: 0.02% Sodium azide Constituent: 99% PBS
精製度	Immunogen affinity purified
ポリ/モノ	ポリクローナル
アイソタイプ	IgG

アプリケーション

The Abpromise guarantee

Abpromise保証は、次のテスト済みアプリケーションにおけるab115305の使用に適用されます

アプリケーションノートには、推奨の開始希釈率がありますが、適切な希釈率につきましてはご検討ください。

アプリケーション	Abreviews	特記事項
WB		Use a concentration of 1 - 2 µg/ml. Predicted molecular weight: 59 kDa.
IHC-P		Use a concentration of 5 µg/ml. Perform heat mediated antigen retrieval with citrate buffer pH 6 before commencing with IHC staining protocol.

ターゲット情報

組織特異性

Widely expressed, with highest expression in brain.

配列類似性

Contains 4 EAR repeats.

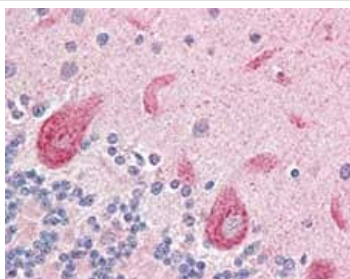
Contains 4 LRR (leucine-rich) repeats.

Contains 1 LRRCT domain.

細胞内局在

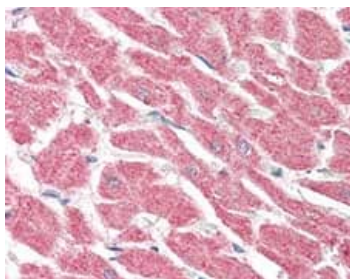
Secreted.

画像



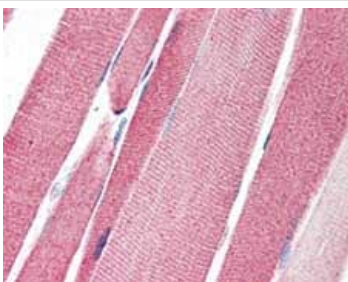
Immunohistochemistry (Formalin/PFA-fixed paraffin-embedded sections) - Anti-Lgi4 antibody (ab115305)

ab115305, at 5µg/ml, staining Lgi4 in formalin-fixed, paraffin-embedded Human Brain, Cerebellum by Immunohistochemistry, using a biotinylated goat anti-rabbit IgG secondary antibody, alkaline phosphatase-streptavidin and chromogen.



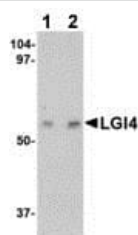
Immunohistochemistry (Formalin/PFA-fixed paraffin-embedded sections) - Anti-Lgi4 antibody (ab115305)

ab115305, at 5µg/ml, staining Lgi4 in formalin-fixed, paraffin-embedded Human Heart tissue by Immunohistochemistry, using a biotinylated goat anti-rabbit IgG secondary antibody, alkaline phosphatase-streptavidin and chromogen.



Immunohistochemistry (Formalin/PFA-fixed paraffin-embedded sections) - Anti-Lgi4 antibody (ab115305)

ab115305, at 5µg/ml, staining Lgi4 in formalin-fixed, paraffin-embedded Human Skeletal Muscle tissue by Immunohistochemistry, using a biotinylated goat anti-rabbit IgG secondary antibody, alkaline phosphatase-streptavidin and chromogen.



Western blot - Anti-Lgi4 antibody (ab115305)

Lane 1 : Anti-Lgi4 antibody (ab115305) at 1 µg/ml

Lane 2 : Anti-Lgi4 antibody (ab115305) at 2 µg/ml

All lanes : Human brain tissue lysate

Predicted band size: 59 kDa

Please note: All products are "FOR RESEARCH USE ONLY. NOT FOR USE IN DIAGNOSTIC PROCEDURES"

Our Abpromise to you: Quality guaranteed and expert technical support

- Replacement or refund for products not performing as stated on the datasheet
- Valid for 12 months from date of delivery
- Response to your inquiry within 24 hours
- We provide support in Chinese, English, French, German, Japanese and Spanish
- Extensive multi-media technical resources to help you
- We investigate all quality concerns to ensure our products perform to the highest standards

If the product does not perform as described on this datasheet, we will offer a refund or replacement. For full details of the Abpromise, please visit <https://www.abcam.co.jp/abpromise> or contact our technical team.

Terms and conditions

- Guarantee only valid for products bought direct from Abcam or one of our authorized distributors