

Anti-LexA DNA Binding Region antibody ab50953

6 References [画像数 1](#)

製品の概要

製品名	Anti-LexA DNA Binding Region antibody
製品の詳細	Rabbit polyclonal to LexA DNA Binding Region
由来種	Rabbit
特異性	This antibody recognizes E. coli LexA and LexA DBD-tagged fusion proteins.
アプリケーション	適用あり: WB, IP
種交差性	交差種: Escherichia coli
免疫原	Recombinant full length protein corresponding to Escherichia coli LexA DNA Binding Region.
特記事項	<p>The Life Science industry has been in the grips of a reproducibility crisis for a number of years. Abcam is leading the way in addressing this with our range of recombinant monoclonal antibodies and knockout edited cell lines for gold-standard validation. Please check that this product meets your needs before purchasing.</p> <p>If you have any questions, special requirements or concerns, please send us an inquiry and/or contact our Support team ahead of purchase. Recommended alternatives for this product can be found below, along with publications, customer reviews and Q&As</p>

製品の特性

製品の状態	Liquid
保存方法	Shipped at 4°C. Upon delivery aliquot and store at -20°C. Avoid freeze / thaw cycles.
バッファー	Preservative: 0.035% Sodium azide Constituents: Whole serum, 30% Glycerol
精製度	Whole antiserum
ポリ/モノ	ポリクローナル
アイソタイプ	IgG

アプリケーション

The Abpromise guarantee **Abpromise保証は、**次のテスト済みアプリケーションにおけるab50953の使用に適用されます
アプリケーションノートには、推奨の開始希釈率がありますが、適切な希釈率につきましてはご検討ください。

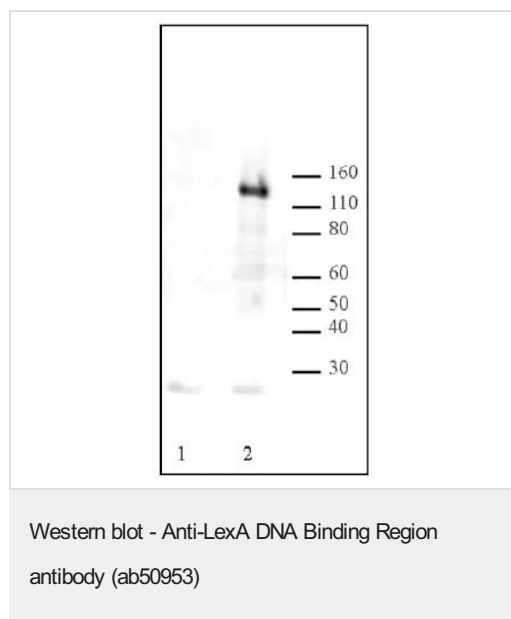
アプリケーション	Abreviews	特記事項
WB		1/25000 - 1/100000. Detects a band of approximately 130 kDa (predicted molecular weight: 49 kDa). 1/25000 - 1/100000. Detects a band of approximately 130 kDa (predicted molecular weight: 49 kDa). This product has been tested by Western blotting using a LexA-Rb fusion and a LexA-PP2A, beta subunit fusion expressed in budding yeast. The observed molecular weight of a fusion protein will be increased by approximately 24
IP		Use at 1-0.2 µg/mg of lysate.

ターゲット情報

関連性 The LexA protein of Escherichia coli is a transcriptional repressor regulating approximately 20 genes, many of which are involved in DNA repair (SOS response). It binds with variable affinity to single, double, or even triple-operators via its amino-terminal domain that contains three alpha-helices spanning residues. This characteristic of LexA protein has been used to make efficient baits for two-hybrid studies.

細胞内局在 Nuclear

画像



All lanes : Anti-LexA DNA Binding Region antibody (ab50953) at 1/100000 dilution

Lane 1 : Crude yeast protein extract without a LexA fusion protein

Lane 2 : Crude yeast protein extract expressing a LexA-Retinitis pigmentosa (Rb) fusion protein

Lysates/proteins at 20 µg per lane.

Predicted band size: 49 kDa

Observed band size: 130 kDa

Please note: All products are "FOR RESEARCH USE ONLY. NOT FOR USE IN DIAGNOSTIC PROCEDURES"

Our Promise to you: Quality guaranteed and expert technical support

- Replacement or refund for products not performing as stated on the datasheet
- Valid for 12 months from date of delivery

- Response to your inquiry within 24 hours
- We provide support in Chinese, English, French, German, Japanese and Spanish
- Extensive multi-media technical resources to help you
- We investigate all quality concerns to ensure our products perform to the highest standards

If the product does not perform as described on this datasheet, we will offer a refund or replacement. For full details of the Abpromise, please visit <https://www.abcam.co.jp/abpromise> or contact our technical team.

Terms and conditions

- Guarantee only valid for products bought direct from Abcam or one of our authorized distributors