


# Anti-Leukotriene B4 Receptor 2 antibody ab84600

**2 References** [画像数 1](#)

### 製品の概要

製品名	Anti-Leukotriene B4 Receptor 2 antibody
製品の詳細	Rabbit polyclonal to Leukotriene B4 Receptor 2
由来種	Rabbit
アプリケーション	<b>適用あり:</b> WB <b>適用なし:</b> ICC/IF
種交差性	<b>交差種:</b> Human <b>交差が予測される動物種:</b> Mouse, Rat 
免疫原	Synthetic peptide corresponding to Human Leukotriene B4 Receptor 2 aa 150-250 conjugated to keyhole limpet haemocyanin. (Peptide available as <a href="#">ab94553</a> )
ポジティブ・コントロール	This antibody gave a positive signal in Human brain tissue lysate.
特記事項	<p>The Life Science industry has been in the grips of a reproducibility crisis for a number of years. Abcam is leading the way in addressing this with our range of recombinant monoclonal antibodies and knockout edited cell lines for gold-standard validation. Please check that this product meets your needs before purchasing.</p> <p>If you have any questions, special requirements or concerns, please send us an inquiry and/or contact our Support team ahead of purchase. Recommended alternatives for this product can be found below, along with publications, customer reviews and Q&amp;As</p>

### 製品の特性

製品の状態	Liquid
保存方法	Shipped at 4°C. Store at +4°C short term (1-2 weeks). Upon delivery aliquot. Store at -20°C or -80°C. Avoid freeze / thaw cycle.
バッファー	pH: 7.40 Preservative: 0.02% Sodium azide Constituent: PBS
	Batches of this product that have a concentration < 1mg/ml may have BSA added as a stabilising agent. If you would like information about the formulation of a specific lot, please contact our scientific support team who will be happy to help.

精製度	Immunogen affinity purified
ポリ/モノ	ポリクローナル
アイソタイプ	IgG

アプリケーション

The Abpromise guarantee      **Abpromise保証は、次のテスト済みアプリケーションにおけるab84600の使用に適用されます**  
アプリケーションノートには、推奨の開始希釈率がありますが、適切な希釈率につきましてはご検討ください。

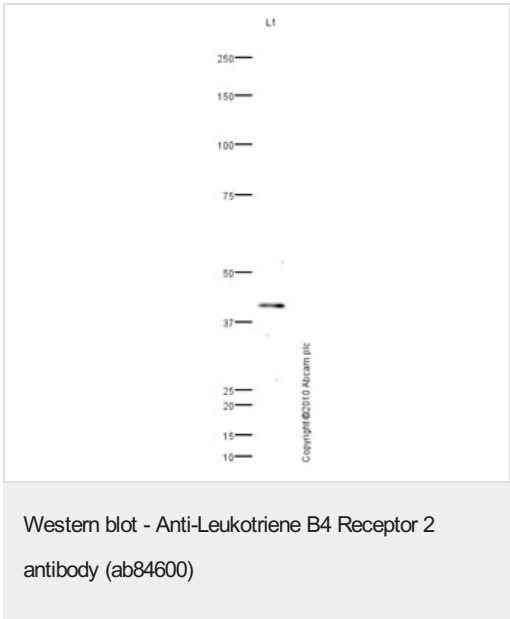
アプリケーション	Abreviews	特記事項
WB		Use a concentration of 1 µg/ml. Detects a band of approximately 41 kDa (predicted molecular weight: 41 kDa).

追加情報      Is unsuitable for ICC/IF.

ターゲット情報

機能	Low-affinity receptor for leukotrienes including leukotriene B4. Mediates chemotaxis of granulocytes and macrophages. The response is mediated via G-proteins that activate a phosphatidylinositol-calcium second messenger system. The rank order of affinities for the leukotrienes is LTB4 > 12-epi-LTB4 > LTB5 > LTB3.
組織特異性	Widely expressed.
配列類似性	Belongs to the G-protein coupled receptor 1 family.
細胞内局在	Cell membrane.

画像



Anti-Leukotriene B4 Receptor 2 antibody (ab84600) at 1 µg/ml +  
Human brain tissue lysate - total protein (**ab29466**) at 10 µg

Secondary

Goat polyclonal to Rabbit IgG - H&L - Pre-Adsorbed (HRP) at  
1/3000 dilution

Developed using the ECL technique.

Performed under reducing conditions.

**Predicted band size:** 41 kDa

**Observed band size:** 41 kDa

**Exposure time:** 15 minutes

**Please note:** All products are "FOR RESEARCH USE ONLY. NOT FOR USE IN DIAGNOSTIC PROCEDURES"

### **Our Abpromise to you: Quality guaranteed and expert technical support**

---

- Replacement or refund for products not performing as stated on the datasheet
- Valid for 12 months from date of delivery
- Response to your inquiry within 24 hours
  
- We provide support in Chinese, English, French, German, Japanese and Spanish
- Extensive multi-media technical resources to help you
- We investigate all quality concerns to ensure our products perform to the highest standards

If the product does not perform as described on this datasheet, we will offer a refund or replacement. For full details of the Abpromise, please visit <https://www.abcam.co.jp/abpromise> or contact our technical team.

### **Terms and conditions**

---

- Guarantee only valid for products bought direct from Abcam or one of our authorized distributors