


Anti-Leukotriene A4 hydrolase/LTA4H antibody [EPR5712] ab109434

KO 評価済 リコンビナント RabMAb

画像数 5

製品の概要

製品名	Anti-Leukotriene A4 hydrolase/LTA4H antibody [EPR5712]
製品の詳細	Rabbit monoclonal [EPR5712] to Leukotriene A4 hydrolase/LTA4H
由来種	Rabbit
アプリケーション	適用あり: WB, IHC-P 適用なし: ICC/IF
種交差性	交差種: Human 交差が予測される動物種: Rat 
免疫原	Synthetic peptide. This information is proprietary to Abcam and/or its suppliers.
ポジティブ・コントロール	WB: HeLa, 293T, T47-D, and A549 cell lysates. IHC-P: Human breast carcinoma tissue.
特記事項	<p>This product is a recombinant monoclonal antibody, which offers several advantages including:</p> <ul style="list-style-type: none"> - High batch-to-batch consistency and reproducibility - Improved sensitivity and specificity - Long-term security of supply - Animal-free production <p>For more information see here.</p> <p>Our RabMAb[®] technology is a patented hybridoma-based technology for making rabbit monoclonal antibodies. For details on our patents, please refer to RabMAb[®] patents.</p> <p>Mouse: We have preliminary internal testing data to indicate this antibody may not react with this species. Please contact us for more information.</p>

製品の特性

製品の状態	Liquid
保存方法	Shipped at 4°C. Store at -20°C. Stable for 12 months at -20°C.
解離定数 (K _D 値)	K _D = 5.80 x 10 ⁻¹¹ M





[Learn more about K_D](#)

バッファー	pH: 7.20 Preservative: 0.05% Sodium azide Constituents: 0.1% BSA, 40% Glycerol (glycerin, glycerine), 9.85% Tris glycine, 50% Tissue culture supernatant
精製度	Protein A purified
ポリ/モノ	モノクローナル
クローン名	EPR5712
アイソタイプ	IgG

アプリケーション

The Abpromise guarantee **Abpromise保証は、** 次のテスト済みアプリケーションにおけるab109434の使用に適用されます
アプリケーションノートには、推奨の開始希釈率がありますが、適切な希釈率につきましてはご検討ください。

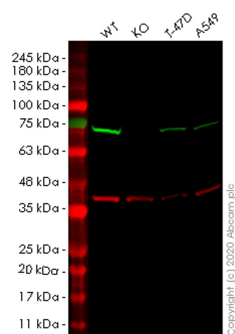
アプリケーション	Abreviews	特記事項
WB		1/10000 - 1/50000. Predicted molecular weight: 69 kDa.
IHC-P		1/250 - 1/500. Perform heat mediated antigen retrieval with citrate buffer pH 6 before commencing with IHC staining protocol. Antigen retrieval is recommended.

追加情報 Is unsuitable for ICC/IF.

ターゲット情報

機能	Hydrolyzes an epoxide moiety of leukotriene A4 (LTA-4) to form leukotriene B4 (LTB-4). The enzyme also has some peptidase activity.
パスウェイ	Lipid metabolism; leukotriene B4 biosynthesis.
配列類似性	Belongs to the peptidase M1 family.
細胞内局在	Cytoplasm.

画像



Western blot - Anti-Leukotriene A4 hydrolase/LTA4H antibody [EPR5712] (ab109434)

All lanes : Anti-Leukotriene A4 hydrolase/LTA4H antibody [EPR5712] (ab109434) at 1/1000 dilution

Lane 1 : Wild-type HEK293T cell lysate

Lane 2 : LTA4H knockout HEK293T cell lysate

Lane 3 : T-47D cell lysate

Lane 4 : A549 cell lysate

Lysates/proteins at 20 µg per lane.

Secondary

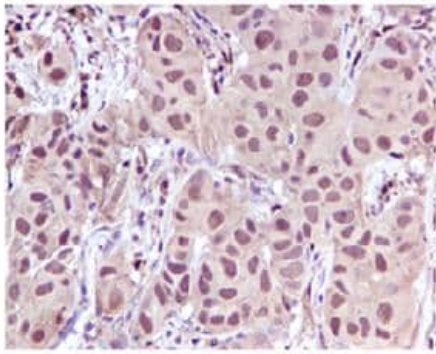
All lanes : Goat anti-Rabbit IgG H&L (IRDye® 800CW) preadsorbed ([ab216773](#)) at 1/10000 dilution

Predicted band size: 69 kDa

Observed band size: 69 kDa

Lanes 1-4: Merged signal (red and green). Green - ab109434 observed at 69 kDa. Red - loading control [ab8245](#) observed at 36 kDa.

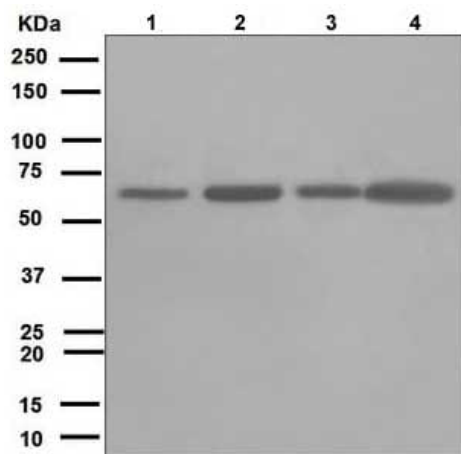
ab109434 Anti-Leukotriene A4 hydrolase/LTA4H antibody [EPR5712] was shown to specifically react with Leukotriene in wild-type HEK293T cells. Loss of signal was observed when knockout cell line [ab266467](#) (knockout cell lysate [ab258034](#)) was used. Wild-type and Leukotriene knockout samples were subjected to SDS-PAGE. ab109434 and Anti-GAPDH antibody [6C5] - Loading Control ([ab8245](#)) were incubated overnight at 4°C at 1 in 1000 dilution and 1 in 20000 dilution respectively. Blots were developed with Goat anti-Rabbit IgG H&L (IRDye® 800CW) preadsorbed ([ab216773](#)) and Goat anti-Mouse IgG H&L (IRDye® 680RD) preadsorbed ([ab216776](#)) secondary antibodies at 1 in 20000 dilution for 1 hour at room temperature before imaging.



Immunohistochemistry (Formalin/PFA-fixed paraffin-embedded sections) - Anti-Leukotriene A4 hydrolase/LTA4H antibody [EPR5712] (ab109434)

Immunohistochemical analysis of Leukotriene A4 hydrolase/LTA4H in paraffin-embedded Human breast carcinoma tissue using ab109434 at 1/250 dilution.

Perform heat mediated antigen retrieval with citrate buffer pH 6 before commencing with IHC staining protocol.



Western blot - Anti-Leukotriene A4 hydrolase/LTA4H antibody [EPR5712] (ab109434)

All lanes : Anti-Leukotriene A4 hydrolase/LTA4H antibody [EPR5712] (ab109434) at 1/10000 dilution

Lane 1 : HeLa cell lysate

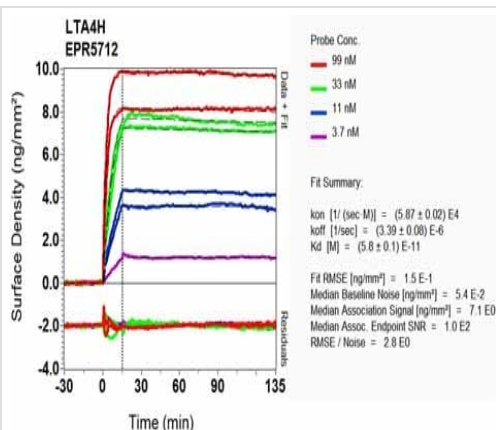
Lane 2 : 293T cell lysate

Lane 3 : T47D cell lysate

Lane 4 : A549 cell lysate

Lysates/proteins at 10 µg per lane.

Predicted band size: 69 kDa



OR-D Scanning - Anti-Leukotriene A4 hydrolase/LTA4H antibody [EPR5712] (ab109434)

Equilibrium dissociation constant (K_D)

Learn more about K_D

[Click here to learn more about \$K_D\$](#)

Why choose a recombinant antibody?



Research with confidence
Consistent and reproducible results



Long-term and scalable supply
Recombinant technology



Success from the first experiment
Confirmed specificity



Ethical standards compliant
Animal-free production

Anti-Leukotriene A4 hydrolase/LTA4H antibody
[EPR5712] (ab109434)

Please note: All products are "FOR RESEARCH USE ONLY. NOT FOR USE IN DIAGNOSTIC PROCEDURES"

Our Abpromise to you: Quality guaranteed and expert technical support

- Replacement or refund for products not performing as stated on the datasheet
- Valid for 12 months from date of delivery
- Response to your inquiry within 24 hours
- We provide support in Chinese, English, French, German, Japanese and Spanish
- Extensive multi-media technical resources to help you
- We investigate all quality concerns to ensure our products perform to the highest standards

If the product does not perform as described on this datasheet, we will offer a refund or replacement. For full details of the Abpromise, please visit <https://www.abcam.co.jp/abpromise> or contact our technical team.

Terms and conditions

- Guarantee only valid for products bought direct from Abcam or one of our authorized distributors