

Anti-Lethal factor antibody [5F502.2] ab13814

[2 References](#) [画像数 1](#)

製品の概要

製品名	Anti-Lethal factor antibody [5F502.2]
製品の詳細	Mouse monoclonal [5F502.2] to Lethal factor
由来種	Mouse
特異性	The antibody has been tested against recombinant protein only (0.1 ug recombinant protein was loaded per lane).
アプリケーション	適用あり: WB
種交差性	交差種: Human
免疫原	Synthetic peptide corresponding to Lethal factor.
ポジティブ・コントロール	0.1 ug recombinant protein
特記事項	<p>The Life Science industry has been in the grips of a reproducibility crisis for a number of years. Abcam is leading the way in addressing this with our range of recombinant monoclonal antibodies and knockout edited cell lines for gold-standard validation. Please check that this product meets your needs before purchasing.</p> <p>If you have any questions, special requirements or concerns, please send us an inquiry and/or contact our Support team ahead of purchase. Recommended alternatives for this product can be found below, along with publications, customer reviews and Q&As</p>

製品の特性

製品の状態	Liquid
保存方法	Shipped at 4°C. Store at +4°C short term (1-2 weeks). Upon delivery aliquot. Store at -20°C or -80°C. Avoid freeze / thaw cycle.
バッファー	Preservative: 0.05% Sodium azide Constituents: PBS, 0.05% BSA
精製度	Protein G purified
ポリ/モノ	モノクローナル
クローン名	5F502.2
アイソタイプ	IgG1

The Abpromise guarantee **Abpromise保証は、** 次のテスト済みアプリケーションにおけるab13814の使用に適用されず
 アプリケーションノートには、推奨の開始希釈率がありますが、適切な希釈率につきましてはご検討ください。

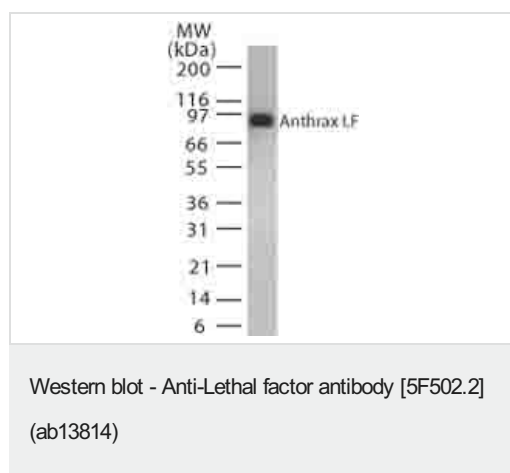
アプリケーション	Abreviews	特記事項
WB		Use a concentration of 0.1 µg/ml. Detects a band of approximately 90 kDa.

ターゲット情報

関連性 The protease enzyme Lethal Factor (LF) is one of the three proteins (LF, EF & PA) composing the anthrax toxin produced by Bacillus anthracis, a bacteria which can infect many mammalian species and that may be fatal. LF is not toxic by itself, but when associated with Protective Antigen (PA), can then gain entry to cells. Once inside the cell, LF then cleaves the N terminal of most dual specificity mitogen activated protein kinase kinases (MAPKKs or MAP2Ks) (except for MAP2K5). Cleavage invariably occurs within the N terminal proline rich region preceding the kinase domain, thus disrupting a sequence involved in directing specific protein protein interactions necessary for the assembly of signaling complexes. There may be other cytosolic targets of LF involved in cytotoxicity. The proteasome may mediate a toxic process initiated by LF in the cell cytosol involving degradation of unidentified molecules that are essential for macrophage homeostasis. This is an early step in LF intoxication, but it is downstream of the cleavage by LF of MEK1 or other putative substrates.

細胞内局在 secreted

画像



Western blot analysis of Lethal factor in recombinant protein using ab13814 at 0.1 mg/ml.

Please note: All products are "FOR RESEARCH USE ONLY. NOT FOR USE IN DIAGNOSTIC PROCEDURES"

Our Abpromise to you: Quality guaranteed and expert technical support

- Replacement or refund for products not performing as stated on the datasheet
- Valid for 12 months from date of delivery

- Response to your inquiry within 24 hours
- We provide support in Chinese, English, French, German, Japanese and Spanish
- Extensive multi-media technical resources to help you
- We investigate all quality concerns to ensure our products perform to the highest standards

If the product does not perform as described on this datasheet, we will offer a refund or replacement. For full details of the Abpromise, please visit <https://www.abcam.co.jp/abpromise> or contact our technical team.

Terms and conditions

- Guarantee only valid for products bought direct from Abcam or one of our authorized distributors