




Anti-Leptin Receptor antibody ab50424

1 [References](#) **2** [画像数](#)

製品の概要

製品名	Anti-Leptin Receptor antibody
製品の詳細	Goat polyclonal to Leptin Receptor
由来種	Goat
特異性	This antibody is expected to recognise all three reported isoforms (NP_002294.2; NP_001003679.1; NP_001003680.1) of Leptin Receptor.
アプリケーション	適用あり: IHC-P, Flow Cyt, WB
種交差性	交差種: Mouse, Rat, Human 交差が予測される動物種: Dog 
免疫原	Synthetic peptide corresponding to Human Leptin Receptor aa 829-841 (internal sequence). Sequence: C-TQDDIEKHQSDAG Database link: P48357 <div>  Run BLAST with  Run BLAST with </div>
ポジティブ・コントロール	WB: Human Cerebellum, Mouse Foetal Brain and Rat Brain lysate. Flow Cyt: K562 cells
特記事項	<p>The Life Science industry has been in the grips of a reproducibility crisis for a number of years. Abcam is leading the way in addressing this with our range of recombinant monoclonal antibodies and knockout edited cell lines for gold-standard validation. Please check that this product meets your needs before purchasing.</p> <p>If you have any questions, special requirements or concerns, please send us an inquiry and/or contact our Support team ahead of purchase. Recommended alternatives for this product can be found below, along with publications, customer reviews and Q&As</p>

製品の特性

製品の状態	Liquid
保存方法	Shipped at 4°C. Upon delivery aliquot and store at -20°C or -80°C. Avoid repeated freeze / thaw cycles.
バッファー	pH: 7.30 Preservative: 0.02% Sodium azide Constituents: 0.5% Tris buffered saline, 0.5% BSA

精製度	Immunogen affinity purified
特記事項 (精製)	Purified from goat serum by ammonium sulphate precipitation followed by antigen affinity chromatography using the immunizing peptide.
ポリ/モノ	ポリクローナル
アイソタイプ	IgG

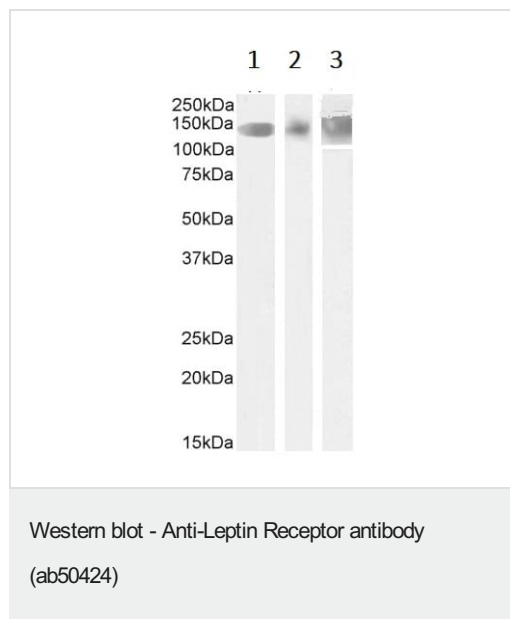
アプリケーション

The Abpromise guarantee **Abpromise保証は、次のテスト済みアプリケーションにおけるab50424の使用に適用されます**
 アプリケーションノートには、推奨の開始希釈率がありますが、適切な希釈率につきましてはご検討ください。

アプリケーション	Abreviews	特記事項
IHC-P		Use a concentration of 4 µg/ml. Perform heat mediated antigen retrieval with citrate buffer pH 6 before commencing with IHC staining protocol.
Flow Cyt		Use a concentration of 10 µg/ml.
WB		Use a concentration of 1 - 2 µg/ml. Detects a band of approximately 150 kDa (predicted molecular weight: 132 kDa). 1 hour primary incubation is recommended for this product.

ターゲット情報

機能	Receptor for obesity factor (leptin). On ligand binding, mediates signaling through JAK2/STAT3. Involved in the regulation of fat metabolism and, in a hematopoietic pathway, required for normal lymphopoiesis. May play a role in reproduction. Can also mediate the ERK/FOS signaling pathway.
組織特異性	Isoform A is expressed in fetal liver and in hematopoietic tissues and choroid plexus. In adults highest expression in heart, liver, small intestine, prostate and ovary. Low level in lung and kidney. Isoform B is highly expressed in hypothalamus.
配列類似性	Belongs to the type I cytokine receptor family. Type 2 subfamily. Contains 4 fibronectin type-III domains. Contains 1 Ig-like (immunoglobulin-like) domain.
ドメイン	The cytoplasmic domain may be essential for intracellular signal transduction by activation of JAK tyrosine kinase and STATs. The WSXWS motif appears to be necessary for proper protein folding and thereby efficient intracellular transport and cell-surface receptor binding. The box 1 motif is required for JAK interaction and/or activation.
翻訳後修飾	On ligand binding, phosphorylated on two conserved C-terminal tyrosine residues (isoform B only) by JAK2. Tyr-986 is required for complete binding and activation of PTPN11, ERK/FOS activation and, for interaction with SOCS3 (By similarity). Phosphorylation on Tyr-1141 is required for STAT3 binding/activation.
細胞内局在	Secreted and Cell membrane.



Lane 1 : Anti-Leptin Receptor antibody (ab50424) at 1.75 µg/ml

Lanes 2-3 : Anti-Leptin Receptor antibody (ab50424) at 1.5 µg/ml

Lane 1 : Human Cerebellum tissue lysate

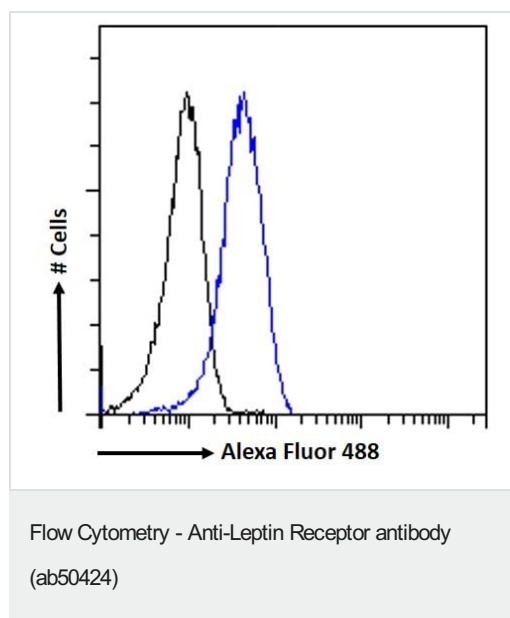
Lane 2 : Mouse Foetal Brain tissue lysate

Lane 3 : Rat Brain tissue lysate

Lysates/proteins at 35 µg per lane.

Predicted band size: 132 kDa

Lysate in RIPA buffer. Detected by chemiluminescence.



Flow cytometric analysis of paraformaldehyde fixed K562 cells (blue line), permeabilized with 0.5% Triton. Primary incubation 1hr (10µg/mL) followed by Alexa Fluor 488 secondary antibody (1µg/mL). IgG control: Unimmunized goat IgG (black line) followed by Alexa Fluor 488 secondary antibody.

Please note: All products are "FOR RESEARCH USE ONLY. NOT FOR USE IN DIAGNOSTIC PROCEDURES"

Our Abpromise to you: Quality guaranteed and expert technical support

- Replacement or refund for products not performing as stated on the datasheet
- Valid for 12 months from date of delivery
- Response to your inquiry within 24 hours
- We provide support in Chinese, English, French, German, Japanese and Spanish
- Extensive multi-media technical resources to help you
- We investigate all quality concerns to ensure our products perform to the highest standards

If the product does not perform as described on this datasheet, we will offer a refund or replacement. For full details of the Abpromise,

please visit <https://www.abcam.co.jp/abpromise> or contact our technical team.

Terms and conditions

- Guarantee only valid for products bought direct from Abcam or one of our authorized distributors