


Anti-Leptin antibody ab3583

★★★★★ [3 Abreviews](#) [33 References](#) [画像数 5](#)

製品の概要

製品名	Anti-Leptin antibody
製品の詳細	Rabbit polyclonal to Leptin
由来種	Rabbit
アプリケーション	適用あり: ICC, IHC-Fr, Flow Cyt
種交差性	交差種: Mouse, Sheep, Human 交差が予測される動物種: Goat, Horse, Chicken, Cow, Cat, Dog, Turkey, Chimpanzee, Rhesus monkey 
免疫原	Synthetic peptide corresponding to Mouse Leptin aa 25-44. Sequence: QKVQDDTKTLIKTIVTRIND Run BLAST with Run BLAST with
ポジティブ・コントロール	ICC: 3T3-L1, HeLa and mesenchymal stem cells. IHC-P: Sheep brain tissue. Flow Cyt: 3T3-L1 cells.
特記事項	The Life Science industry has been in the grips of a reproducibility crisis for a number of years. Abcam is leading the way in addressing this with our range of recombinant monoclonal antibodies and knockout edited cell lines for gold-standard validation. Please check that this product meets your needs before purchasing. If you have any questions, special requirements or concerns, please send us an inquiry and/or contact our Support team ahead of purchase. Recommended alternatives for this product can be found below, along with publications, customer reviews and Q&As

製品の特性

製品の状態	Liquid
保存方法	Shipped at 4°C. Store at +4°C short term (1-2 weeks). Upon delivery aliquot. Store at -20°C or -80°C. Avoid freeze / thaw cycle.
バッファー	Preservative: 0.05% Sodium azide Constituents: 0.1% BSA, 99% PBS
精製度	Immunogen affinity purified
ポリ/モノ	ポリクローナル

アプリケーション

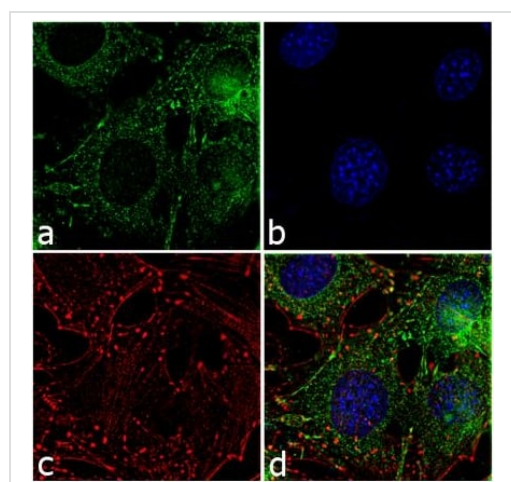
The Abpromise guarantee **Abpromise保証は、次のテスト済みアプリケーションにおけるab3583の使用に適用されます**
 アプリケーションノートには、推奨の開始希釈率がありますが、適切な希釈率につきましてはご検討ください。

アプリケーション	Abreviews	特記事項
ICC		Use a concentration of 5 µg/ml.
IHC-Fr	★☆☆☆☆ (1)	1/50 - 1/200.
Flow Cyt		Use 3-5µl for 10 ⁶ cells.

ターゲット情報

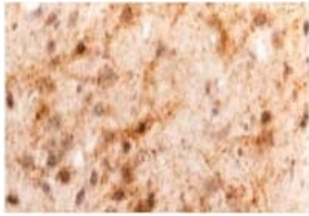
機能	May function as part of a signaling pathway that acts to regulate the size of the body fat depot. An increase in the level of LEP may act directly or indirectly on the CNS to inhibit food intake and/or regulate energy expenditure as part of a homeostatic mechanism to maintain constancy of the adipose mass.
関連疾患	Defects in LEP may be a cause of obesity (OBESITY) [MIM:601665]. It is a condition characterized by an increase of body weight beyond the limitation of skeletal and physical requirements, as the result of excessive accumulation of body fat.
配列類似性	Belongs to the leptin family.
細胞内局在	Secreted.

画像



ab3583 staining Leptin in 3T3-L1 cells by ICC (Immunocytochemistry). Cells were fixed with 4% paraformaldehyde, permeabilized with 0.1% Triton X-100 and blocked with 1% BSA for 1 hour at room temperature. Samples were incubated with primary antibody (2ug/ml in 0.1% BSA) for 3 hours at room temperature. An Alexa Fluor® 488-conjugated Goat anti-rabbit IgG (H+L) polyclonal was used as the secondary antibody (1/2000) (Panel a). Nuclei were stained with DAPI (Panel b). F-actin stained with Rhodamine Phalloidin (panel c). Merged images shown in panel d.

Immunocytochemistry - Anti-Leptin antibody (ab3583)

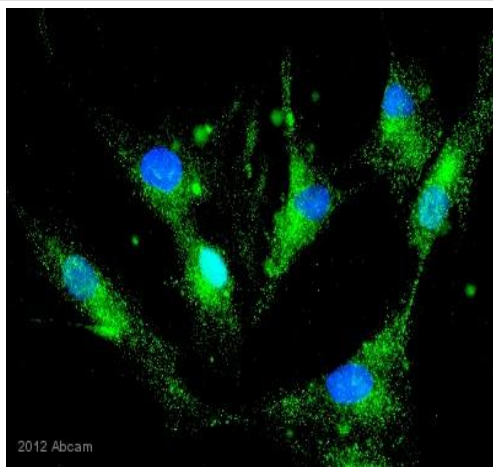


Immunohistochemistry (Frozen sections) - Anti-Leptin antibody (ab3583)

Immunohistochemical staining of Leptin in Sheep brain using ab3583.

Immunocytochemistry - Anti-Leptin antibody (ab3583)

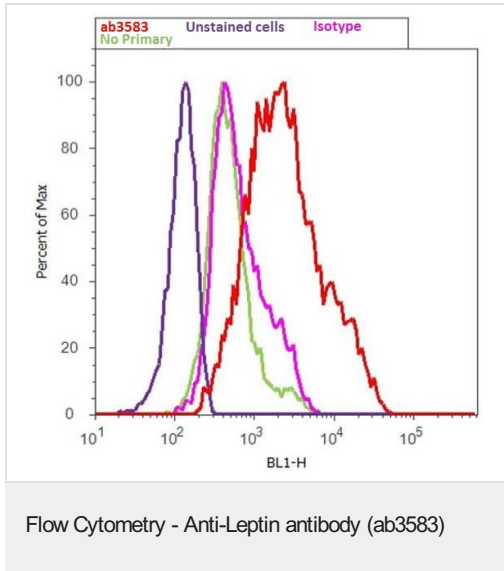
ICC image of ab3583 stained HeLa cells. The cells were 4% formaldehyde fixed (10 min) and then incubated in 1%BSA / 10% normal goat serum / 0.3M glycine in 0.1% PBS-Tween for 1h to permeabilise the cells and block non-specific protein-protein interactions. The cells were then incubated with the antibody (ab3583, 5µg/ml) overnight at +4°C. The secondary antibody (green) was Alexa Fluor® 488 goat anti-rabbit IgG (H+L) used at a 1/1000 dilution for 1h. Alexa Fluor® 594 WGA was used to label plasma membranes (red) at a 1/200 dilution for 1h. DAPI was used to stain the cell nuclei (blue) at a concentration of 1.43µM.



Immunocytochemistry - Anti-Leptin antibody (ab3583)

This image is courtesy of an Abreview submitted by Steven Johnstone

ab3583 staining Leptin in Human mesenchymal stem cells by ICC (Immunocytochemistry). Cells were fixed with paraformaldehyde and blocked with 10% serum for 30 minutes at 22°C. Samples were incubated with primary antibody (1/100 in 10% horse serum) for 1 hour at 22°C. A FITC-conjugated Mouse anti-rabbit IgG1 monoclonal was used as the secondary antibody (1/100).



ab3583 staining Leptin in 3T3-L1 cells by Flow Cytometry. The sample was incubated with the primary antibody (3ug/ml in 2.5% BSA) for 2 hours at room temperature. An Alexa Fluor 488®-conjugated Goat anti-rabbit (1/400) was used as the secondary antibody. Red histogram represents ab3583, pink histogram represents isotype control, purple histogram represents unstained control, green histogram represents no primary antibody control

Please note: All products are "FOR RESEARCH USE ONLY. NOT FOR USE IN DIAGNOSTIC PROCEDURES"

Our Abpromise to you: Quality guaranteed and expert technical support

- Replacement or refund for products not performing as stated on the datasheet
- Valid for 12 months from date of delivery
- Response to your inquiry within 24 hours
- We provide support in Chinese, English, French, German, Japanese and Spanish
- Extensive multi-media technical resources to help you
- We investigate all quality concerns to ensure our products perform to the highest standards

If the product does not perform as described on this datasheet, we will offer a refund or replacement. For full details of the Abpromise, please visit <https://www.abcam.co.jp/abpromise> or contact our technical team.

Terms and conditions

- Guarantee only valid for products bought direct from Abcam or one of our authorized distributors