


Anti-Legumain antibody [EPR14718] ab183028

リコンビナント RabMAb[®]

★★★★★ [1 Abreviews](#) [4 References](#) [画像数 2](#)

製品の概要

製品名	Anti-Legumain antibody [EPR14718]
製品の詳細	Rabbit monoclonal [EPR14718] to Legumain
由来種	Rabbit
アプリケーション	適用あり: WB
種交差性	交差種: Human 交差が予測される動物種: Mouse, Rat 
免疫原	Recombinant fragment. This information is proprietary to Abcam and/or its suppliers.
ポジティブ・コントロール	Human fetal kidney lysate; JAR, HeLa and 293 cell lysates.
特記事項	This product is a recombinant monoclonal antibody, which offers several advantages including: <ul style="list-style-type: none"> - High batch-to-batch consistency and reproducibility - Improved sensitivity and specificity - Long-term security of supply - Animal-free production For more information see here . Our RabMAb [®] technology is a patented hybridoma-based technology for making rabbit monoclonal antibodies. For details on our patents, please refer to RabMAb[®] patents .

製品の特性

製品の状態	Liquid
保存方法	Shipped at 4°C. Store at +4°C short term (1-2 weeks). Upon delivery aliquot. Store at -20°C long term. Avoid freeze / thaw cycle.
バッファー	pH: 7.2 Preservative: 0.01% Sodium azide Constituents: 59% PBS, 40% Glycerol (glycerin, glycerine), 0.05% BSA
精製度	Protein A purified
ポリモノ	モノクローナル
クローン名	EPR14718
アイソタイプ	IgG

アプリケーション

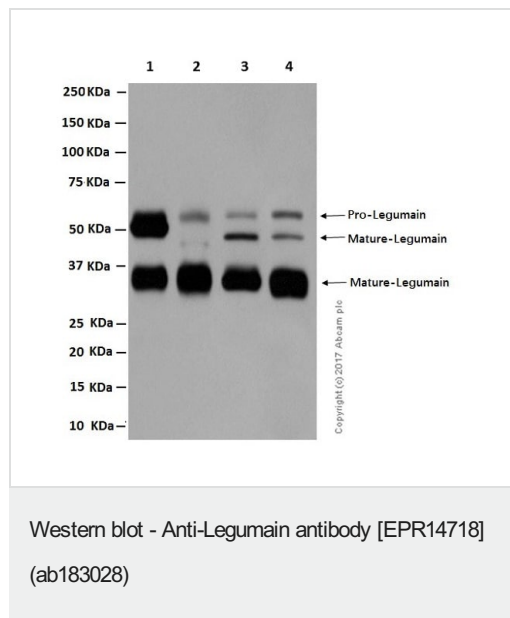
The Abpromise guarantee Abpromise保証は、次のテスト済みアプリケーションにおけるab183028の使用に適用されます
アプリケーションノートには、推奨の開始希釈率がありますが、適切な希釈率につきましてはご検討ください。

アプリケーション	Abreviews	特記事項
WB	★☆☆☆☆ (1)	1/10000 - 1/50000. Predicted molecular weight: 49 kDa.

ターゲット情報

機能	Has a strict specificity for hydrolysis of asparaginyl bonds. Can also cleave aspartyl bonds slowly, especially under acidic conditions. May be involved in the processing of proteins for MHC class II antigen presentation in the lysosomal/endosomal system.
組織特異性	Ubiquitous. Particularly abundant in kidney, heart and placenta.
配列類似性	Belongs to the peptidase C13 family.
翻訳後修飾	Glycosylated.
細胞内局在	Lysosome.

画像



All lanes : Anti-Legumain antibody [EPR14718] (ab183028) at 1/10000 dilution

Lane 1 : Human fetal kidney tissue lysate

Lane 2 : JAR (human placenta choriocarcinoma cell line) whole cell lysate

Lane 3 : HeLa (human epithelial cell line from cervix adenocarcinoma) whole cell lysate

Lane 4 : HEK-293 (human epithelial cell line from embryonic kidney) whole cell lysate


Lysates/proteins at 20 µg per lane.

Predicted band size: 49 kDa

Exposure time: 3 minutes

Actual band at: 36kDa, 46kDa, 56kDa

Why choose a recombinant antibody?



- Research with confidence**
Consistent and reproducible results
- Long-term and scalable supply**
Recombinant technology
- Success from the first experiment**
Confirmed specificity
- Ethical standards compliant**
Animal-free production

Anti-Legumain antibody [EPR14718] (ab183028)

Please note: All products are "FOR RESEARCH USE ONLY. NOT FOR USE IN DIAGNOSTIC PROCEDURES"

Our Abpromise to you: Quality guaranteed and expert technical support

- Replacement or refund for products not performing as stated on the datasheet
- Valid for 12 months from date of delivery
- Response to your inquiry within 24 hours
- We provide support in Chinese, English, French, German, Japanese and Spanish
- Extensive multi-media technical resources to help you
- We investigate all quality concerns to ensure our products perform to the highest standards

If the product does not perform as described on this datasheet, we will offer a refund or replacement. For full details of the Abpromise, please visit <https://www.abcam.co.jp/abpromise> or contact our technical team.

Terms and conditions

- Guarantee only valid for products bought direct from Abcam or one of our authorized distributors