


# Anti-LEFTY2 antibody [7C5G1H6H10] ab115224

画像数 2

### 製品の概要

製品名	Anti-LEFTY2 antibody [7C5G1H6H10]
製品の詳細	Mouse monoclonal [7C5G1H6H10] to LEFTY2
由来種	Mouse
特異性	May cross react with the highly homologous LEFTY1.
アプリケーション	<b>適用あり:</b> WB, IHC-P
種交差性	<b>交差種:</b> Human <b>交差が予測される動物種:</b> Mouse, Rat 
免疫原	A recombinant form of 6X HIS tagged LEFTY2 (Human)
ポジティブ・コントロール	Human uterus, myometrium tissue
特記事項	<p>The Life Science industry has been in the grips of a reproducibility crisis for a number of years. Abcam is leading the way in addressing this with our range of recombinant monoclonal antibodies and knockout edited cell lines for gold-standard validation. Please check that this product meets your needs before purchasing.</p> <p>If you have any questions, special requirements or concerns, please send us an inquiry and/or contact our Support team ahead of purchase. Recommended alternatives for this product can be found below, along with publications, customer reviews and Q&amp;As</p>

### 製品の特性

製品の状態	Liquid
保存方法	Shipped at 4°C. Upon delivery aliquot and store at -20°C. Avoid repeated freeze / thaw cycles.
バッファー	pH: 7.20 Preservative: 0.01% Sodium azide Constituents: 0.424% Potassium phosphate, 0.88% Sodium chloride
精製度	Protein A purified
ポリ/モノ	モノクローナル
クローン名	7C5G1H6H10
ミエローマ	Sp2/0
アイソタイプ	IgG2a

アプリケーション

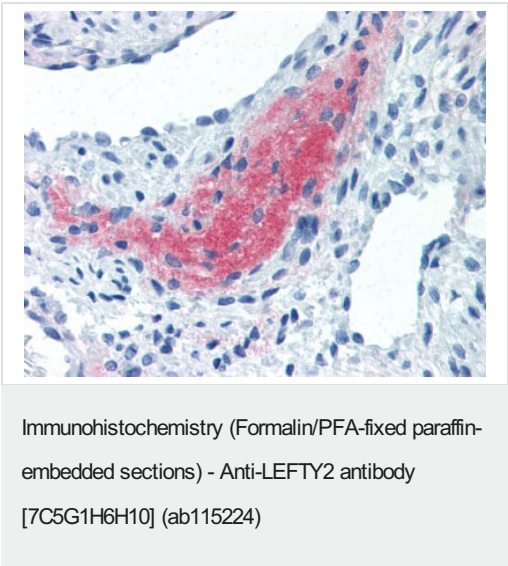
The Abpromise guarantee      **Abpromise保証は、** 次のテスト済みアプリケーションにおけるab115224の使用に適用されます  
アプリケーションノートには、推奨の開始希釈率がありますが、適切な希釈率につきましてはご検討ください。

アプリケーション	Abreviews	特記事項
WB		1/2000. Predicted molecular weight: 41 kDa.
IHC-P		Use a concentration of 10 µg/ml. Perform heat mediated antigen retrieval with citrate buffer pH 6 before commencing with IHC staining protocol.

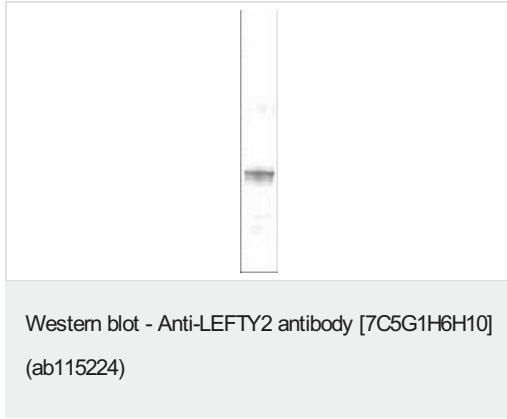
ターゲット情報

機能	Required for left-right (L-R) asymmetry determination of organ systems in mammals. May play a role in endometrial bleeding.
組織特異性	Mesenchymal cells of the endometrial stroma.
関連疾患	Defects in LEFTY2 are the cause of left-right axis malformations (LRAM) [MIM:601877]. The defect includes left pulmonary isomerism, with cardiac anomalies characterized by complete atrioventricular canal defect and hypoplastic left ventricle, and interrupted inferior vena cava.
配列類似性	Belongs to the TGF-beta family.
発生段階	Transiently expressed before and during menstrual bleeding.
翻訳後修飾	The processing of the protein may also occur at the second R-X-X-R site located at AA 132-135. Processing appears to be regulated in a cell-type specific manner.
細胞内局在	Secreted.

画像



Human uterus, myometrium (formalin fixed, paraffin embedded) stained with ab115224 at 10 ug/ml followed by biotinylated anti Mouse IgG secondary antibody, alkaline phosphatase streptavidin and chromogen.



Anti-LEFTY2 antibody [7C5G1H6H10] (ab115224) at 1/2000 dilution + partially purified recombinant 6X His tagged human LEFTY2 at 1000 µg

**Predicted band size:** 41 kDa

**Please note:** All products are "FOR RESEARCH USE ONLY. NOT FOR USE IN DIAGNOSTIC PROCEDURES"

### Our Abpromise to you: Quality guaranteed and expert technical support

---

- Replacement or refund for products not performing as stated on the datasheet
- Valid for 12 months from date of delivery
- Response to your inquiry within 24 hours
- We provide support in Chinese, English, French, German, Japanese and Spanish
- Extensive multi-media technical resources to help you
- We investigate all quality concerns to ensure our products perform to the highest standards

If the product does not perform as described on this datasheet, we will offer a refund or replacement. For full details of the Abpromise, please visit <https://www.abcam.co.jp/abpromise> or contact our technical team.

### Terms and conditions

---

- Guarantee only valid for products bought direct from Abcam or one of our authorized distributors