




Anti-LDB2 antibody ab3627

[1 Abreviews](#) [2 References](#) [画像数 1](#)

製品の概要

製品名	Anti-LDB2 antibody
製品の詳細	Rabbit polyclonal to LDB2
由来種	Rabbit
特異性	This antibody detects a single clean band representing LDB2 at 42kD in human kidney and mouse spleen.
アプリケーション	適用あり: WB
種交差性	交差種: Mouse, Human 交差が予測される動物種: Chicken 
免疫原	Synthetic peptide: SKESYHNSSITVDC conjugated to KLH, corresponding to amino acids 107-120 of Human LDB2. <div>  Run BLAST with  Run BLAST with </div>
特記事項	<p>The Life Science industry has been in the grips of a reproducibility crisis for a number of years. Abcam is leading the way in addressing this with our range of recombinant monoclonal antibodies and knockout edited cell lines for gold-standard validation. Please check that this product meets your needs before purchasing.</p> <p>If you have any questions, special requirements or concerns, please send us an inquiry and/or contact our Support team ahead of purchase. Recommended alternatives for this product can be found below, along with publications, customer reviews and Q&As</p>

製品の特性

製品の状態	Liquid
保存方法	Shipped at 4°C. Upon delivery aliquot and store at -20°C or -80°C. Avoid repeated freeze / thaw cycles.
バッファー	Preservative: 0.01% Sodium azide Constituents: 0.42% Potassium phosphate, 0.87% Sodium chloride
精製度	Immunogen affinity purified
ポリ/モノ	ポリクローナル
アイソタイプ	IgG

アプリケーション

The Abpromise guarantee

Abpromise保証は、次のテスト済みアプリケーションにおけるab3627の使用に適用されます

アプリケーションノートには、推奨の開始希釈率がありますが、適切な希釈率につきましてはご検討ください。

アプリケーション	Abreviews	特記事項
WB		

追加情報

ICC/IF: Use at an assay dependent dilution (PMID 19675209).

WB: 1/500. Detects a band of approximately 42 kDa (predicted molecular weight: 42.7 kDa).

Not yet tested in other applications.

Optimal dilutions/concentrations should be determined by the end user.

ターゲット情報

機能

Binds to the LIM domain of a wide variety of LIM domain-containing transcription factors.

配列類似性

Belongs to the LDB family.

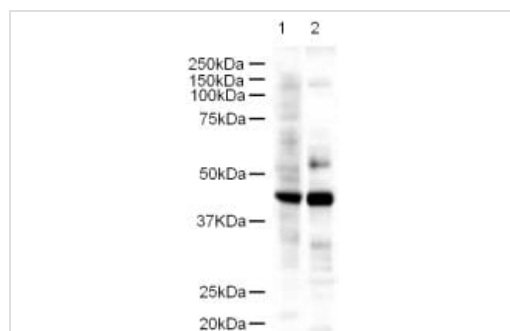
翻訳後修飾

Ubiquitinated by RLIM/RNF12, leading to its degradation by the proteasome.

細胞内局在

Nucleus.

画像



Western blot - Anti-LDB2 antibody (ab3627)

Western blot using ab3627 at 1/500.

Lane 1: Human Kidney

Lane 2: Mouse Spleen

Lysates at 18µg per lane.

Secondary ab: Goat polyclonal to Rabbit IgG H&L (HRP) Pre-Adsorbed

ab7090 (1/5000).

Exposure time: 1 minute.

Please note: All products are "FOR RESEARCH USE ONLY. NOT FOR USE IN DIAGNOSTIC PROCEDURES"

Our Abpromise to you: Quality guaranteed and expert technical support

- Replacement or refund for products not performing as stated on the datasheet
- Valid for 12 months from date of delivery
- Response to your inquiry within 24 hours
- We provide support in Chinese, English, French, German, Japanese and Spanish

- Extensive multi-media technical resources to help you
- We investigate all quality concerns to ensure our products perform to the highest standards

If the product does not perform as described on this datasheet, we will offer a refund or replacement. For full details of the Abpromise, please visit <https://www.abcam.co.jp/abpromise> or contact our technical team.

Terms and conditions

- Guarantee only valid for products bought direct from Abcam or one of our authorized distributors