

Anti-LBH antibody ab122223

4 References [画像数 5](#)

製品の概要

製品名	Anti-LBH antibody
製品の詳細	Rabbit polyclonal to LBH
由来種	Rabbit
アプリケーション	適用あり: ICC, IHC-P
種交差性	交差種: Human
免疫原	antigen sequence: PDYLRSKMT EVMMNTQPM EIGLSPRKDG LSYQIFPDPS DFDRCKLKD RLPSIVVEPT EGEVESGELR WPPEEFLVQE DEQDNCEETA KE, corresponding to amino acids 10-101 of Human LBH (UniProt ID: Q53QV2). Run BLAST with ExpASY Run BLAST with NCBI
ポジティブ・コントロール	IHC-P: Human fallopian tube, prostate, cerebral cortex, and gastrointestinal tissues; ICC: Human cell line RH-30.
特記事項	<p>The Life Science industry has been in the grips of a reproducibility crisis for a number of years. Abcam is leading the way in addressing this with our range of recombinant monoclonal antibodies and knockout edited cell lines for gold-standard validation. Please check that this product meets your needs before purchasing.</p> <p>If you have any questions, special requirements or concerns, please send us an inquiry and/or contact our Support team ahead of purchase. Recommended alternatives for this product can be found below, along with publications, customer reviews and Q&As</p>

製品の特性

製品の状態	Liquid
保存方法	Shipped at 4°C. Store at +4°C short term (1-2 weeks). Upon delivery aliquot. Store at -20°C long term.
バッファー	pH: 7.20 Preservative: 0.02% Sodium azide Constituents: 40% Glycerol, 59% PBS
精製度	Immunogen affinity purified
ポリ/モノ	ポリクローナル
アイソタイプ	IgG

アプリケーション

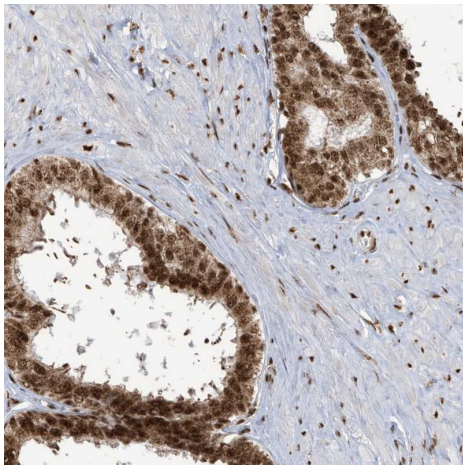
The Abpromise guarantee Abpromise保証は、次のテスト済みアプリケーションにおけるab122223の使用に適用されず
アプリケーションノートには、推奨の開始希釈率がありますが、適切な希釈率につきましてはご検討ください。

アプリケーション	Abreviews	特記事項
ICC		Use a concentration of 0.25 - 2 µg/ml.
IHC-P		1/200 - 1/500. Perform heat mediated antigen retrieval with citrate buffer pH 6 before commencing with IHC staining protocol.

ターゲット情報

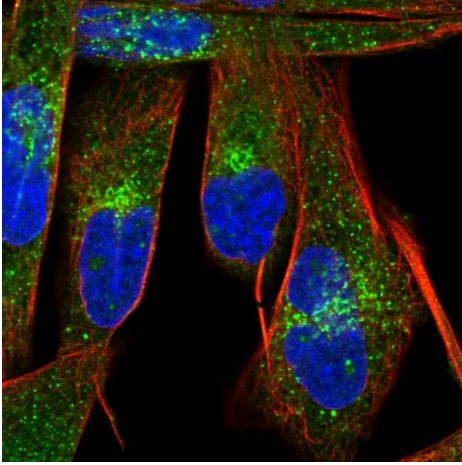
機能	Transcriptional activator which may act in mitogen-activated protein kinase signaling pathway.
組織特異性	Highly expressed in heart, and expressed at low levels in placenta, lung, skeletal muscle, kidney and liver.
配列類似性	Belongs to the LBH family.
発生段階	Expressed in heart of 25 and 17 weeks embryos.
細胞内局在	Nucleus. Cytoplasm.

画像



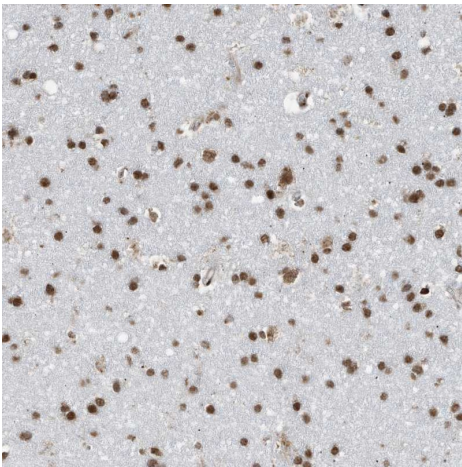
Immunohistochemistry (Formalin/PFA-fixed paraffin-embedded sections) analysis of human prostate tissue labelling LBH with ab122223 at 1/200 dilution. Heat mediated antigen retrieval performed with citrate buffer pH 6 before commencing with IHC staining protocol.

Immunohistochemistry (Formalin/PFA-fixed paraffin-embedded sections) - Anti-LBH antibody (ab122223)



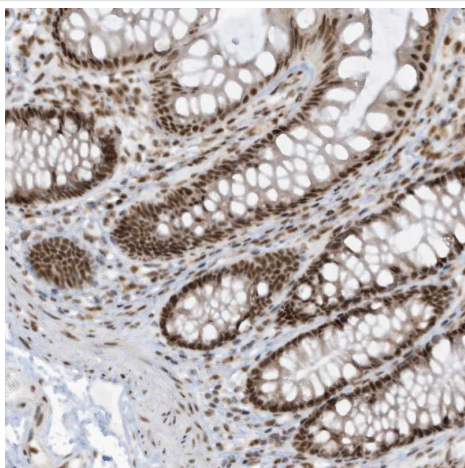
Immunocytochemistry - Anti-LBH antibody
(ab122223)

Immunocytochemistry analysis of RH-30 (human bone marrow metastasis cell line) cells labelling LBH with ab122223 at 2 µg/mL.



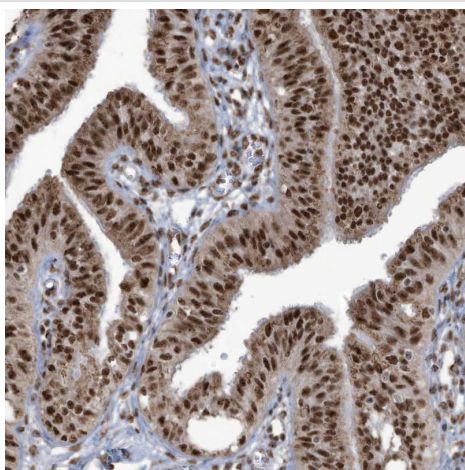
Immunohistochemistry (Formalin/PFA-fixed paraffin-embedded sections) - Anti-LBH antibody (ab122223)

Immunohistochemistry (Formalin/PFA-fixed paraffin-embedded sections) analysis of human cerebral cortex tissue labelling LBH with ab122223 at 1/200 dilution. Heat mediated antigen retrieval performed with citrate buffer pH 6 before commencing with IHC staining protocol.



Immunohistochemistry (Formalin/PFA-fixed paraffin-embedded sections) - Anti-LBH antibody (ab122223)

Immunohistochemistry (Formalin/PFA-fixed paraffin-embedded sections) analysis of human gastrointestinal tissue labelling LBH with ab122223 at 1/200 dilution. Heat mediated antigen retrieval performed with citrate buffer pH 6 before commencing with IHC staining protocol.



Immunohistochemistry (Formalin/PFA-fixed paraffin-embedded sections) - Anti-LBH antibody (ab122223)

Immunohistochemistry (Formalin/PFA-fixed paraffin-embedded sections) analysis of human fallopian tube tissue labelling LBH with ab122223 at 1/200 dilution. Heat mediated antigen retrieval performed with citrate buffer pH 6 before commencing with IHC staining protocol.

Please note: All products are "FOR RESEARCH USE ONLY. NOT FOR USE IN DIAGNOSTIC PROCEDURES"

Our Abpromise to you: Quality guaranteed and expert technical support

- Replacement or refund for products not performing as stated on the datasheet

- Valid for 12 months from date of delivery
- Response to your inquiry within 24 hours

- We provide support in Chinese, English, French, German, Japanese and Spanish
- Extensive multi-media technical resources to help you
- We investigate all quality concerns to ensure our products perform to the highest standards

If the product does not perform as described on this datasheet, we will offer a refund or replacement. For full details of the Abpromise, please visit <https://www.abcam.co.jp/abpromise> or contact our technical team.

Terms and conditions

- Guarantee only valid for products bought direct from Abcam or one of our authorized distributors