


Product datasheet

Anti-LATS1/WARTS ((phospho T1079) +LATS2 (phospho T1041) antibody ab111344

★★★★☆ [1 Abreviews](#) [15 References](#) [画像数 1](#)

製品の概要

製品名	Anti-LATS1/WARTS ((phospho T1079) +LATS2 (phospho T1041) antibody
製品の詳細	Rabbit polyclonal to LATS1/WARTS (phospho T1079) + LATS2 (phospho T1041)
由来種	Rabbit
アプリケーション	適用あり: IHC-P
種交差性	交差種: Human 交差が予測される動物種: Mouse 
免疫原	This product was produced with the following immunogens: Synthetic peptide corresponding to Human LATS1/WARTS (C terminal) (phospho T1079). Synthetic peptide corresponding to Human LATS2 (phospho T1041).
ポジティブ・コントロール	Human brain tissue.
特記事項	<p>The Life Science industry has been in the grips of a reproducibility crisis for a number of years. Abcam is leading the way in addressing this with our range of recombinant monoclonal antibodies and knockout edited cell lines for gold-standard validation. Please check that this product meets your needs before purchasing.</p> <p>If you have any questions, special requirements or concerns, please send us an inquiry and/or contact our Support team ahead of purchase. Recommended alternatives for this product can be found below, along with publications, customer reviews and Q&As</p>

製品の特性

製品の状態	Liquid
保存方法	Shipped at 4°C. Store at -20°C. Stable for 12 months at -20°C.
バッファー	pH: 7.40 Preservative: 0.02% Sodium azide Constituents: 49.1% PBS, 0.88% Sodium chloride, 50% Glycerol
精製度	PBS (without Mg ²⁺ and Ca ²⁺) Immunogen affinity purified

特記事項 (精製)

ab111344 was affinity-purified from Rabbit antiserum by affinity-chromatography using epitope-specific phosphopeptide. The antibody against non-phosphopeptide was removed by chromatography using non-phosphopeptide corresponding to the phosphorylation site.

ポリモノ

ポリクローナル

アイソタイプ

IgG

アプリケーション

The Abpromise guarantee

Abpromise保証は、次のテスト済みアプリケーションにおけるab111344の使用に適用されます

アプリケーションノートには、推奨の開始希釈率がありますが、適切な希釈率につきましてはご検討ください。

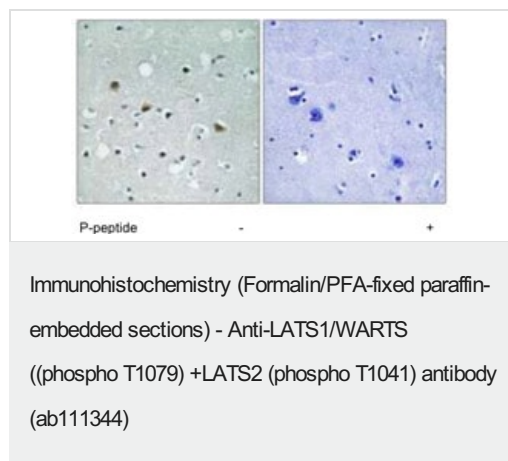
アプリケーション	Abreviews	特記事項
IHC-P		1/50 - 1/100. Perform heat mediated antigen retrieval with citrate buffer pH 6 before commencing with IHC staining protocol.

ターゲット情報

細胞内局在

LATS1/WARTS: Cytoplasm, cytoskeleton, microtubule organizing center, centrosome. Localizes to the centrosomes throughout interphase but migrates to the mitotic apparatus, including spindle pole bodies, mitotic spindle, and midbody, during mitosis. LATS2: Cytoplasm > cytoskeleton > centrosome. Cytoplasm. Cytoplasm > cytoskeleton > spindle pole. Co-localizes with STK6 at the centrosomes during interphase, early prophase and cytokinesis. Migrates to the spindle poles during mitosis, and to the midbody during cytokinesis.

画像



ab111344 at 1/50 dilution staining LATS1 +LATS2 in paraffin-embedded Human Brain tissue by Immunohistochemistry. The image on the right is treated with the synthesized phosphopeptide.

Please note: All products are "FOR RESEARCH USE ONLY. NOT FOR USE IN DIAGNOSTIC PROCEDURES"

Our Abpromise to you: Quality guaranteed and expert technical support

- Replacement or refund for products not performing as stated on the datasheet

- Valid for 12 months from date of delivery
- Response to your inquiry within 24 hours

- We provide support in Chinese, English, French, German, Japanese and Spanish
- Extensive multi-media technical resources to help you
- We investigate all quality concerns to ensure our products perform to the highest standards

If the product does not perform as described on this datasheet, we will offer a refund or replacement. For full details of the Abpromise, please visit <https://www.abcam.co.jp/abpromise> or contact our technical team.

Terms and conditions

- Guarantee only valid for products bought direct from Abcam or one of our authorized distributors