

Anti-LATS1/WARTS antibody ab70561

★★★★★ [1 Abreviews](#) [20 References](#) [画像数 3](#)

製品の概要

製品名	Anti-LATS1/WARTS antibody
製品の詳細	Rabbit polyclonal to LATS1/WARTS
由来種	Rabbit
アプリケーション	適用あり: WB, IP
種交差性	交差種: Mouse, Human 交差が予測される動物種: Horse, Dog, Chimpanzee, Gorilla, Chinese hamster 
免疫原	Synthetic peptide corresponding to Human LATS1/WARTS aa 50-100. Database link: O95835
ポジティブ・コントロール	WB: Whole cell lysate from HeLa Cells, mouse CT26.WT and TCMK-1 cells
特記事項	<p>The Life Science industry has been in the grips of a reproducibility crisis for a number of years. Abcam is leading the way in addressing this with our range of recombinant monoclonal antibodies and knockout edited cell lines for gold-standard validation. Please check that this product meets your needs before purchasing.</p> <p>If you have any questions, special requirements or concerns, please send us an inquiry and/or contact our Support team ahead of purchase. Recommended alternatives for this product can be found below, along with publications, customer reviews and Q&As</p>

製品の特性

製品の状態	Liquid
保存方法	Shipped at 4°C. Upon delivery aliquot and store at -20°C. Avoid freeze / thaw cycles.
バッファー	pH: 6.8 Preservative: 0.09% Sodium azide Constituents: 0.1% BSA, Tris buffered saline
精製度	Immunogen affinity purified
特記事項 (精製)	ab70561 was affinity purified using an epitope specific to LATS1/WARTS immobilized on solid support.
ポリ/モノ	ポリクローナル
アイソタイプ	IgG

アプリケーション

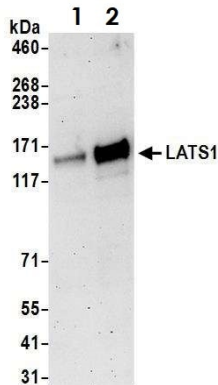
The Abpromise guarantee **Abpromise保証は、次のテスト済みアプリケーションにおけるab70561の使用に適用されます**
アプリケーションノートには、推奨の開始希釈率がありますが、適切な希釈率につきましてはご検討ください。

アプリケーション	Abreviews	特記事項
WB	★★★★★ (1)	1/5000 - 1/15000. Detects a band of approximately 160 kDa (predicted molecular weight: 127 kDa).
IP		Use at 2-5 µg/mg of lysate.

ターゲット情報

機能	Negative regulator of YAP1 in the Hippo signaling pathway that plays a pivotal role in organ size control and tumor suppression by restricting proliferation and promoting apoptosis. The core of this pathway is composed of a kinase cascade wherein STK3/MST2 and STK4/MST1, in complex with its regulatory protein SAV1, phosphorylates and activates LATS1/2 in complex with its regulatory protein MOB1, which in turn phosphorylates and inactivates YAP1 oncoprotein and WWTR1/TAZ. Phosphorylation of YAP1 by LATS1 inhibits its translocation into the nucleus to regulate cellular genes important for cell proliferation, cell death, and cell migration. Acts as a tumor suppressor which plays a critical role in maintenance of ploidy through its actions in both mitotic progression and the G1 tetraploidy checkpoint. Negatively regulates G2/M transition by down-regulating CDK1 kinase activity. Involved in the control of p53 expression. Affects cytokinesis by regulating actin polymerization through negative modulation of LIMK1. May also play a role in endocrine function.
組織特異性	Expressed in all adult tissues examined except for lung and kidney.
配列類似性	Belongs to the protein kinase superfamily. AGC Ser/Thr protein kinase family. Contains 1 AGC-kinase C-terminal domain. Contains 1 protein kinase domain. Contains 1 UBA domain.
翻訳後修飾	Autophosphorylated and phosphorylated during M-phase of the cell cycle. Phosphorylated by STK3/MST2 at Ser-909 and Thr-1079, which results in its activation. Phosphorylation at Ser-464 by NUAK1 and NUAK2 leads to decreased protein level and is required to regulate cellular senescence and cellular ploidy.
細胞内局在	Cytoplasm, cytoskeleton, microtubule organizing center, centrosome. Localizes to the centrosomes throughout interphase but migrates to the mitotic apparatus, including spindle pole bodies, mitotic spindle, and midbody, during mitosis.

画像



Western blot - Anti-LATS1/WARTS antibody (ab70561)

All lanes : Anti-LATS1/WARTS antibody (ab70561) at 0.2 µg/ml

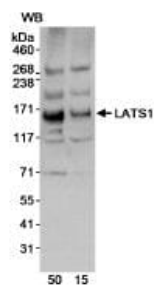
Lane 1 : CT26.WT whole cell lysate

Lane 2 : TCMK-1 whole cell lysate

Lysates/proteins at 50 µg per lane.

Predicted band size: 127 kDa

Exposure time: 3 minutes



Western blot - Anti-LATS1/WARTS antibody (ab70561)

All lanes : Anti-LATS1/WARTS antibody (ab70561) at 0.02 µg/ml

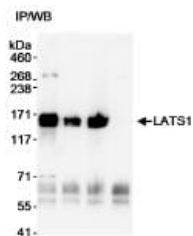
Lane 1 : Whole cell lysate from HeLa cells at 50 µg

Lane 2 : Whole cell lysate from HeLa cells at 15 µg

Predicted band size: 127 kDa

Observed band size: 160 kDa

Additional bands at: 117 kDa, 200 kDa, 268 kDa, 71 kDa. We are unsure as to the identity of these extra bands.



Immunoprecipitation - Anti-LATS1/WARTS antibody (ab70561)

Detection of human LATS1/WARTS by Immunoprecipitation in whole cell lysate from HeLa cells (1 mg, 1/4 of immunoprecipitate loaded/lane), using ab70561 at 3 µg/mg of lysate (lane 1).

LATS1/WARTS was also immunoprecipitated with another LATS1/WARTS antibody (lanes 2) and with **ab70562** (lane 3) using 3 µg/mg lysate.

Lane 4: Control IgG immunoprecipitate.

Subsequent Western blot detection of LATS1/WARTS was performed using ab70561 at 0.1 µg/ml.

Please note: All products are "FOR RESEARCH USE ONLY. NOT FOR USE IN DIAGNOSTIC PROCEDURES"

Our Abpromise to you: Quality guaranteed and expert technical support

- Replacement or refund for products not performing as stated on the datasheet
- Valid for 12 months from date of delivery
- Response to your inquiry within 24 hours

- We provide support in Chinese, English, French, German, Japanese and Spanish
- Extensive multi-media technical resources to help you
- We investigate all quality concerns to ensure our products perform to the highest standards

If the product does not perform as described on this datasheet, we will offer a refund or replacement. For full details of the Abpromise, please visit <https://www.abcam.co.jp/abpromise> or contact our technical team.

Terms and conditions

- Guarantee only valid for products bought direct from Abcam or one of our authorized distributors