


Anti-LAT (phospho Y191) antibody ab59197

3 References [画像数 2](#)

製品の概要

製品名	Anti-LAT (phospho Y191) antibody
製品の詳細	Rabbit polyclonal to LAT (phospho Y191)
由来種	Rabbit
特異性	Detects endogenous levels of LAT only when phosphorylated at tyrosine 191. This antibody detects LAT phosphorylated on Tyrosine 191 in isoform 2 (SwissProt: O43561-2), and Tyrosine 220 in isoform 1 (SwissProt: O43561).
アプリケーション	適用あり: WB, IHC-P, ELISA
種交差性	交差種: Mouse, Human 交差が予測される動物種: Rat 
免疫原	Synthetic peptide corresponding to Human LAT aa 150-250 (phospho Y191). Database link: O43561
特記事項	<p>The Life Science industry has been in the grips of a reproducibility crisis for a number of years. Abcam is leading the way in addressing this with our range of recombinant monoclonal antibodies and knockout edited cell lines for gold-standard validation. Please check that this product meets your needs before purchasing.</p> <p>If you have any questions, special requirements or concerns, please send us an inquiry and/or contact our Support team ahead of purchase. Recommended alternatives for this product can be found below, along with publications, customer reviews and Q&As</p>

製品の特性

製品の状態	Liquid
保存方法	Shipped at 4°C. Store at -20°C. Stable for 12 months at -20°C.
バッファー	pH: 7.40 Preservative: 0.02% Sodium azide Constituents: PBS, 50% Glycerol (glycerin, glycerine), 0.87% Sodium chloride
	Without Mg+2 and Ca+2
精製度	Immunogen affinity purified
特記事項 (精製)	Affinity purified from rabbit antiserum by affinity chromatography using epitope specific phosphopeptide. The antibody against non phosphopeptide was removed by chromatography

using non phosphopeptide corresponding to the phosphorylation site.

ポリモノ

ポリクローナル

アイソタイプ

IgG

アプリケーション

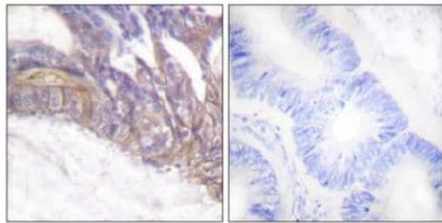
The Abpromise guarantee Abpromise保証は、 次のテスト済みアプリケーションにおけるab59197の使用に適用されます
アプリケーションノートには、推奨の開始希釈率がありますが、適切な希釈率につきましてはご検討ください。

アプリケーション	Abreviews	特記事項
WB		1/500 - 1/1000. Detects a band of approximately 28 kDa (predicted molecular weight: 28 kDa).
IHC-P		Use at an assay dependent concentration.
ELISA		Use at an assay dependent concentration.

ターゲット情報

機能	Required for TCR (T-cell antigen receptor)- and pre-TCR-mediated signaling, both in mature T-cells and during their development. Involved in FCGR3 (low affinity immunoglobulin gamma Fc region receptor III)-mediated signaling in natural killer cells and FCER1 (high affinity immunoglobulin epsilon receptor)-mediated signaling in mast cells. Couples activation of these receptors and their associated kinases with distal intracellular events such as mobilization of intracellular calcium stores, PKC activation, MAPK activation or cytoskeletal reorganization through the recruitment of PLCG1, GRB2, GRAP2, and other signaling molecules.
組織特異性	Expressed in thymus, T-cells, NK cells, mast cells and, at lower levels, in spleen. Present in T-cells but not B-cells (at protein level).
翻訳後修飾	Phosphorylated on tyrosines by ZAP-70 upon TCR activation, or by SYK upon other immunoreceptor activation; which leads to the recruitment of multiple signaling molecules. Is one of the most prominently tyrosine-phosphorylated proteins detected following TCR engagement. May be dephosphorylated by PTPRJ. Palmitoylation of Cys-26 and Cys-29 is required for raft targeting and efficient phosphorylation.
細胞内局在	Cell membrane. Present in lipid rafts.

画像



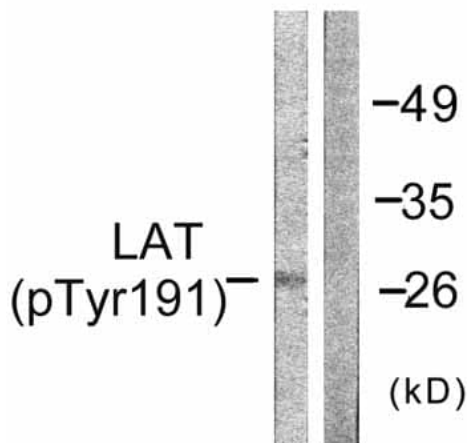
P-peptide

-

+

Immunohistochemistry (Formalin/PFA-fixed paraffin-embedded sections) - Anti-LAT (phospho Y191) antibody (ab59197)

Immunohistochemical analysis of paraffin embedded human colon carcinoma tissue using ab59197 at 1/50 dilution. Left: untreated. Right: sample treated with immunising peptide.



Western blot - Anti-LAT (phospho Y191) antibody (ab59197)

All lanes : Anti-LAT (phospho Y191) antibody (ab59197) at 1/500 dilution

Lane 1 : NIH3T3 cells treated with PMA

Lane 2 : NIH3T3 cells treated with PMA with phosphopeptide

Predicted band size: 28 kDa

Observed band size: 28 kDa

Please note: All products are "FOR RESEARCH USE ONLY. NOT FOR USE IN DIAGNOSTIC PROCEDURES"

Our Abpromise to you: Quality guaranteed and expert technical support

- Replacement or refund for products not performing as stated on the datasheet
- Valid for 12 months from date of delivery
- Response to your inquiry within 24 hours
- We provide support in Chinese, English, French, German, Japanese and Spanish
- Extensive multi-media technical resources to help you
- We investigate all quality concerns to ensure our products perform to the highest standards

If the product does not perform as described on this datasheet, we will offer a refund or replacement. For full details of the Abpromise, please visit <https://www.abcam.co.jp/abpromise> or contact our technical team.

Terms and conditions

- Guarantee only valid for products bought direct from Abcam or one of our authorized distributors