


Anti-LAT (phospho Y132) antibody ab4476

★★★★☆ **1 Abreviews** **14 References** **画像数 1**

製品の概要

製品名	Anti-LAT (phospho Y132) antibody
製品の詳細	Rabbit polyclonal to LAT (phospho Y132)
由来種	Rabbit
アプリケーション	適用あり: WB
種交差性	交差種: Human 交差が予測される動物種: Rat 
免疫原	Synthetic peptide corresponding to Human LAT (phospho Y132).
ポジティブ・コントロール	Jurkat E6.1 cells.
特記事項	<p>The Life Science industry has been in the grips of a reproducibility crisis for a number of years. Abcam is leading the way in addressing this with our range of recombinant monoclonal antibodies and knockout edited cell lines for gold-standard validation. Please check that this product meets your needs before purchasing.</p> <p>If you have any questions, special requirements or concerns, please send us an inquiry and/or contact our Support team ahead of purchase. Recommended alternatives for this product can be found below, along with publications, customer reviews and Q&As</p>

製品の特性

製品の状態	Liquid
保存方法	Shipped at 4°C. Upon delivery aliquot and store at -20°C or -80°C. Avoid repeated freeze / thaw cycles.
バッファー	pH: 7.30 Preservative: 0.05% Sodium azide Constituent: 0.1% BSA
精製度	Immunogen affinity purified
特記事項 (精製)	Purified from rabbit serum by sequential epitope-specific chromatography. The antibody has been negatively preadsorbed using a non-phosphopeptide corresponding to the site of phosphorylation to remove antibody that is reactive with non-phosphorylated LAT. The final product is generated by affinity chromatography using an LAT-derived peptide that is phosphorylated at tyrosine 132.
ポリ/モノ	ポリクローナル

アプリケーション

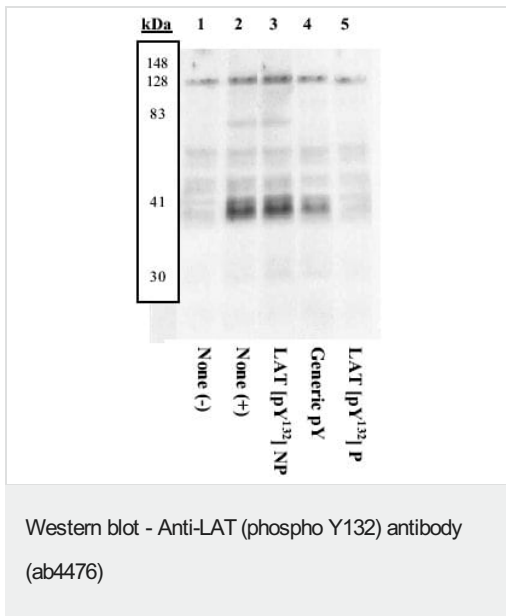
The Abpromise guarantee Abpromise保証は、次のテスト済みアプリケーションにおけるab4476の使用に適用されます
アプリケーションノートには、推奨の開始希釈率がありますが、適切な希釈率につきましてはご検討ください。

アプリケーション	Abreviews	特記事項
WB	★★★★★ (1)	Use a concentration of 0.1 - 1 µg/ml. Detects a band of approximately 38 kDa (predicted molecular weight: 31.4 kDa).

ターゲット情報

機能	Required for TCR (T-cell antigen receptor)- and pre-TCR-mediated signaling, both in mature T-cells and during their development. Involved in FCGR3 (low affinity immunoglobulin gamma Fc region receptor III)-mediated signaling in natural killer cells and FCER1 (high affinity immunoglobulin epsilon receptor)-mediated signaling in mast cells. Couples activation of these receptors and their associated kinases with distal intracellular events such as mobilization of intracellular calcium stores, PKC activation, MAPK activation or cytoskeletal reorganization through the recruitment of PLCG1, GRB2, GRAP2, and other signaling molecules.
組織特異性	Expressed in thymus, T-cells, NK cells, mast cells and, at lower levels, in spleen. Present in T-cells but not B-cells (at protein level).
翻訳後修飾	Phosphorylated on tyrosines by ZAP-70 upon TCR activation, or by SYK upon other immunoreceptor activation; which leads to the recruitment of multiple signaling molecules. Is one of the most prominently tyrosine-phosphorylated proteins detected following TCR engagement. May be dephosphorylated by PTPRJ. Palmitoylation of Cys-26 and Cys-29 is required for raft targeting and efficient phosphorylation.
細胞内局在	Cell membrane. Present in lipid rafts.

画像



Peptide Competition

Extracts prepared from Jurkat E6.1 cells were left unstimulated (1) or stimulated (2-5), resolved by SDS-PAGE on a 10% polyacrylamide gel, and transferred to PVDF. Membranes were blocked with a 5% BSA-TBST buffer overnight at 4°C, then were incubated with 0.35 µg/ml phospho LAT (Tyr 132) antibody for two hours at room temperature in a 3% BSA-TBST buffer, following prior incubation with: no peptide (1, 2), the nonphosphopeptide corresponding to the immunogen (3), a generic phosphotyrosine containing peptide (4), or, the phosphopeptide immunogen (5). After washing, membranes were incubated with goat F(ab')₂ anti-rabbit IgG alkaline phosphatase and signals were detected using the Tropix WesternStar method. The data show that only the peptide corresponding to phospho LAT (Tyr 132) completely blocks the antibody signal, thereby demonstrating the specificity of the antibody, and stimulation-induced tyrosine phosphorylation of phospho LAT (Tyr 132).

Please note: All products are "FOR RESEARCH USE ONLY. NOT FOR USE IN DIAGNOSTIC PROCEDURES"

Our Abpromise to you: Quality guaranteed and expert technical support

- Replacement or refund for products not performing as stated on the datasheet
- Valid for 12 months from date of delivery
- Response to your inquiry within 24 hours
- We provide support in Chinese, English, French, German, Japanese and Spanish
- Extensive multi-media technical resources to help you
- We investigate all quality concerns to ensure our products perform to the highest standards

If the product does not perform as described on this datasheet, we will offer a refund or replacement. For full details of the Abpromise, please visit <https://www.abcam.co.jp/abpromise> or contact our technical team.

Terms and conditions

- Guarantee only valid for products bought direct from Abcam or one of our authorized distributors