

Anti-LAT antibody [Y109] ab32070

リコンビナント RabMAb[®]

1 References [画像数 4](#)

製品の概要

| | |
|--------------|---|
| 製品名 | Anti-LAT antibody [Y109] |
| 製品の詳細 | Rabbit monoclonal [Y109] to LAT |
| 由来種 | Rabbit |
| 特異性 | This antibody is specific for LAT. It detects the long and short forms of LAT. |
| アプリケーション | 適用あり: WB, IHC-P, Flow Cyt (Intra) 適用なし: ICC/IF |
| 種交差性 | 交差種: Human |
| 免疫原 | Synthetic peptide within Human LAT aa 200-300. The exact sequence is proprietary. Corresponds to residues surrounding the GRB2 binding motif 2. |
| ポジティブ・コントロール | WB: Jurkat whole cell lysate (ab7899). IHC-P: Human lymph node. Flow Cyt (intra): Jurkat cells |
| 特記事項 | <p>This product is a recombinant monoclonal antibody, which offers several advantages including:</p> <ul style="list-style-type: none">- High batch-to-batch consistency and reproducibility- Improved sensitivity and specificity- Long-term security of supply- Animal-free production <p>For more information see here.</p> <p>Our RabMAb[®] technology is a patented hybridoma-based technology for making rabbit monoclonal antibodies. For details on our patents, please refer to RabMAb[®] patents.</p> <p>Mouse, Rat: We have preliminary internal testing data to indicate this antibody may not react with these species. Please contact us for more information.</p> |

製品の特性

| | |
|-------|--|
| 製品の状態 | Liquid |
| 保存方法 | Shipped at 4°C. Upon delivery aliquot and store at -20°C. Avoid freeze / thaw cycles. |
| バッファー | pH: 7.20 Preservative: 0.01% Sodium azide Constituents: 49% PBS, 50% Glycerol (glycerin, glycerine), 0.05% BSA |
| 精製度 | Protein A purified |

| | |
|--------|---------|
| ポリ/モノ | モノクローナル |
| クローン名 | Y109 |
| アイソタイプ | IgG |

アプリケーション

The Abpromise guarantee **Abpromise保証は、次のテスト済みアプリケーションにおけるab32070の使用に適用されます**
 アプリケーションノートには、推奨の開始希釈率がありますが、適切な希釈率につきましてはご検討ください。

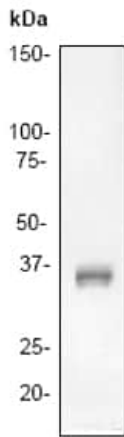
| アプリケーション | Abreviews | 特記事項 |
|------------------|-----------|---|
| WB | | 1/500. Detects a band of approximately 35 kDa (predicted molecular weight: 28 kDa). |
| IHC-P | | Use at an assay dependent concentration. Perform heat mediated antigen retrieval with citrate buffer pH 6 before commencing with IHC staining protocol. |
| Flow Cyt (Intra) | | Use at an assay dependent concentration. |

追加情報 Is unsuitable for ICC/IF.

ターゲット情報

| | |
|--------------|---|
| 機能 | Required for TCR (T-cell antigen receptor)- and pre-TCR-mediated signaling, both in mature T-cells and during their development. Involved in FCGR3 (low affinity immunoglobulin gamma Fc region receptor III)-mediated signaling in natural killer cells and FCER1 (high affinity immunoglobulin epsilon receptor)-mediated signaling in mast cells. Couples activation of these receptors and their associated kinases with distal intracellular events such as mobilization of intracellular calcium stores, PKC activation, MAPK activation or cytoskeletal reorganization through the recruitment of PLCG1, GRB2, GRAP2, and other signaling molecules. |
| 組織特異性 | Expressed in thymus, T-cells, NK cells, mast cells and, at lower levels, in spleen. Present in T-cells but not B-cells (at protein level). |
| 翻訳後修飾 | Phosphorylated on tyrosines by ZAP-70 upon TCR activation, or by SYK upon other immunoreceptor activation; which leads to the recruitment of multiple signaling molecules. Is one of the most prominently tyrosine-phosphorylated proteins detected following TCR engagement. May be dephosphorylated by PTPRJ. Palmitoylation of Cys-26 and Cys-29 is required for raft targeting and efficient phosphorylation. |
| 細胞内局在 | Cell membrane. Present in lipid rafts. |

画像

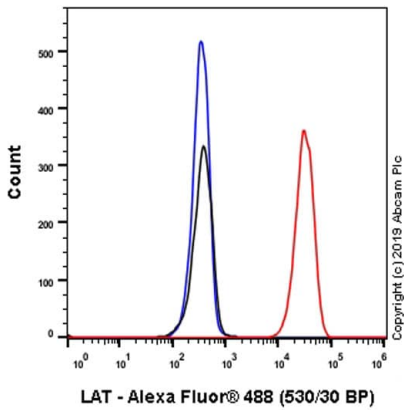


Western blot - Anti-LAT antibody [Y109] (ab32070)

Anti-LAT antibody [Y109] (ab32070) at 1/500 dilution + Jurkat (Human T cell leukemia cell line from peripheral blood) whole cell lysate

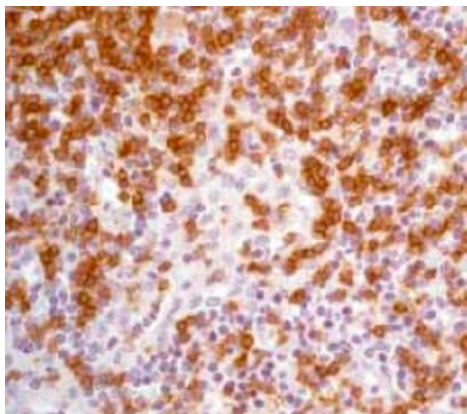
Predicted band size: 28 kDa

Observed band size: 35 kDa



Flow Cytometry (Intracellular) - Anti-LAT antibody [Y109] (ab32070)

Flow Cytometry analysis of Jurkat (Human T cell leukemia T lymphocyte) cells labeling LAT with purified ab32070 at 1/100 dilution (10 µg/mL) (Red). Cells were fixed with 4% Paraformaldehyde and permeabilised with 90% Methanol. A Goat anti rabbit IgG (Alexa Fluor® 488, **ab150077**) secondary antibody was used at 1/2000. Isotype control - Rabbit monoclonal IgG (Black). Unlabeled control - Cells without incubation with primary antibody and secondary antibody (Blue).



Immunohistochemistry (Formalin/PFA-fixed paraffin-embedded sections) - Anti-LAT antibody [Y109] (ab32070)

Ab32070, at a dilution of 1/100, staining LAT in paraffin embedded human lymph node tissue by Immunohistochemistry.

Perform heat mediated antigen retrieval with citrate buffer pH 6 before commencing with IHC staining protocol.

Why choose a recombinant antibody?



Research with confidence
Consistent and reproducible results



Long-term and scalable supply
Recombinant technology



Success from the first experiment
Confirmed specificity



Ethical standards compliant
Animal-free production

Anti-LAT antibody [Y109] (ab32070)

Please note: All products are "FOR RESEARCH USE ONLY. NOT FOR USE IN DIAGNOSTIC PROCEDURES"

Our Abpromise to you: Quality guaranteed and expert technical support

- Replacement or refund for products not performing as stated on the datasheet
- Valid for 12 months from date of delivery
- Response to your inquiry within 24 hours
- We provide support in Chinese, English, French, German, Japanese and Spanish
- Extensive multi-media technical resources to help you
- We investigate all quality concerns to ensure our products perform to the highest standards

If the product does not perform as described on this datasheet, we will offer a refund or replacement. For full details of the Abpromise, please visit <https://www.abcam.co.jp/abpromise> or contact our technical team.

Terms and conditions

-
- Guarantee only valid for products bought direct from Abcam or one of our authorized distributors