



### Anti-LAT antibody ab2507

**4 References** [画像数 1](#)

#### 製品の概要

|          |   |
|----------|---|
| 製品名      | Anti-LAT antibody   |
| 製品の詳細    | Rabbit polyclonal to LAT  |
| 由来種      | Rabbit  |
| 特異性      | Binds to a 36-40 Kd protein in normal mouse lung and heart tissue. A larger size band of approx. 40-45 Kd is seen in human tumour cell lines.   |
| アプリケーション | <b>適用あり:</b> WB   |
| 種交差性     | <b>交差種:</b> Mouse, Human  |
| 免疫原      | Synthetic peptide:<br>CHRLPGSYDSTSSDSLYPRGI<br>, corresponding to amino acids 29-48 of Human LAT.   |
|          |  <a href="#">Run BLAST with</a>  <a href="#">Run BLAST with</a> |

#### 特記事項

The Life Science industry has been in the grips of a reproducibility crisis for a number of years. Abcam is leading the way in addressing this with our range of recombinant monoclonal antibodies and knockout edited cell lines for gold-standard validation. Please check that this product meets your needs before purchasing.

If you have any questions, special requirements or concerns, please send us an inquiry and/or contact our Support team ahead of purchase. Recommended alternatives for this product can be found below, along with publications, customer reviews and Q&As

#### 製品の特性

|        |   |
|--------|---|
| 製品の状態  | Liquid  |
| 保存方法   | Shipped at 4°C. Upon delivery aliquot and store at -20°C or -80°C. Avoid repeated freeze / thaw cycles. |
| バッファー  | Preservative: 0.1% Sodium azide<br>Constituent: 0.1% BSA  |
| 精製度    | Immunogen affinity purified   |
| ポリ/モノ  | ポリクローナル   |
| アイソタイプ | IgG   |

## アプリケーション

### The Abpromise guarantee

**Abpromise保証は、**次のテスト済みアプリケーションにおけるab2507の使用に適用されます

アプリケーションノートには、推奨の開始希釈率がありますが、適切な希釈率につきましてはご検討ください。

| アプリケーション | Abreviews | 特記事項    |
|----------|-----------|---------|
| WB       |           | 1/1000. |

## ターゲット情報

### 機能

Required for TCR (T-cell antigen receptor)- and pre-TCR-mediated signaling, both in mature T-cells and during their development. Involved in FCGR3 (low affinity immunoglobulin gamma Fc region receptor III)-mediated signaling in natural killer cells and FCER1 (high affinity immunoglobulin epsilon receptor)-mediated signaling in mast cells. Couples activation of these receptors and their associated kinases with distal intracellular events such as mobilization of intracellular calcium stores, PKC activation, MAPK activation or cytoskeletal reorganization through the recruitment of PLCG1, GRB2, GRAP2, and other signaling molecules.

### 組織特異性

Expressed in thymus, T-cells, NK cells, mast cells and, at lower levels, in spleen. Present in T-cells but not B-cells (at protein level).

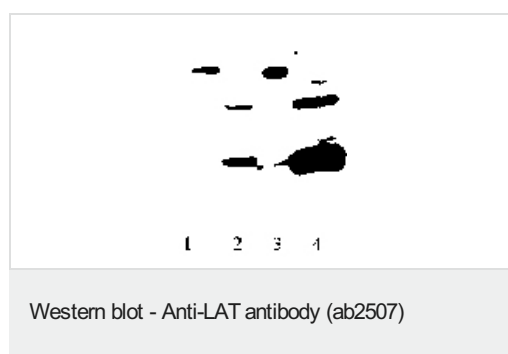
### 翻訳後修飾

Phosphorylated on tyrosines by ZAP-70 upon TCR activation, or by SYK upon other immunoreceptor activation; which leads to the recruitment of multiple signaling molecules. Is one of the most prominently tyrosine-phosphorylated proteins detected following TCR engagement. May be dephosphorylated by PTPRJ. Palmitoylation of Cys-26 and Cys-29 is required for raft targeting and efficient phosphorylation.

### 細胞内局在

Cell membrane. Present in lipid rafts.

## 画像



Antibody recognizes approximately 36 KD size protein and its degradation products in mouse normal tissues. However, antibody specifically reacts with a approximately 46 KD protein in human tumor cell lines Jurkatt and K562. This immunoreactive 46 KD protein appears to be more stable than 36 KD immunoreactive protein observed in normal mouse tissue. (Lane 1, Human T cell line Jurkatt. Lane 2, Mouse Lung Lane 3, Human cell line K562 Lane 4, Mouse Heart).

Antibody recognizes approximately 36 KD size protein and its degradation products in mouse normal tissues. However, antibody specifically reacts with a approximately 46 KD protein in human tumor cell lines Jurkatt and K562. This immunoreactive 46 KD protein appears to be more stable than 36 KD immunoreactive protein observed in normal mouse tissue. (Lane 1, Human T cell line Jurkatt. Lane 2, Mouse Lung Lane 3, Human cell line K562 Lane 4, Mouse Heart).

**Please note:** All products are "FOR RESEARCH USE ONLY. NOT FOR USE IN DIAGNOSTIC PROCEDURES"

### **Our Abpromise to you: Quality guaranteed and expert technical support**

---

- Replacement or refund for products not performing as stated on the datasheet
- Valid for 12 months from date of delivery
- Response to your inquiry within 24 hours
- We provide support in Chinese, English, French, German, Japanese and Spanish
- Extensive multi-media technical resources to help you
- We investigate all quality concerns to ensure our products perform to the highest standards

If the product does not perform as described on this datasheet, we will offer a refund or replacement. For full details of the Abpromise, please visit <https://www.abcam.co.jp/abpromise> or contact our technical team.

### **Terms and conditions**

---

- Guarantee only valid for products bought direct from Abcam or one of our authorized distributors