


# Anti-LARG antibody ab86095

**1 References** [画像数 2](#)

### 製品の概要

製品名	Anti-LARG antibody
製品の詳細	Rabbit polyclonal to LARG
由来種	Rabbit
アプリケーション	<b>適用あり:</b> WB, IP
種交差性	<b>交差種:</b> Human <b>交差が予測される動物種:</b> Chimpanzee, Rhesus monkey, Gorilla, Orangutan 
免疫原	Synthetic peptide, corresponding to a region between residues 1350 and 1400 of human LARG (NP_056128.1)
ポジティブ・コントロール	HeLa whole cell lysate.
特記事項	<p>The Life Science industry has been in the grips of a reproducibility crisis for a number of years. Abcam is leading the way in addressing this with our range of recombinant monoclonal antibodies and knockout edited cell lines for gold-standard validation. Please check that this product meets your needs before purchasing.</p> <p>If you have any questions, special requirements or concerns, please send us an inquiry and/or contact our Support team ahead of purchase. Recommended alternatives for this product can be found below, along with publications, customer reviews and Q&amp;As</p>

### 製品の特性

製品の状態	Liquid
保存方法	Shipped at 4°C. Upon delivery aliquot and store at -20°C. Avoid freeze / thaw cycles.
バッファー	pH: 7 Preservative: 0.09% Sodium azide Constituent: Tris citrate/phosphate
精製度	Immunogen affinity purified
特記事項 (精製)	ab86095 was affinity purified using an epitope specific to LARG immobilized on solid support.
ポリモノ	ポリクローナル
アイソタイプ	IgG

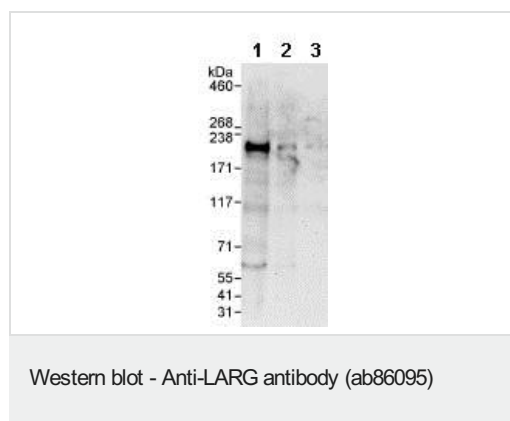
**The Abpromise guarantee** Abpromise保証は、 次のテスト済みアプリケーションにおけるab86095の使用に適用されます  
アプリケーションノートには、推奨の開始希釈率がありますが、適切な希釈率につきましてはご検討ください。

アプリケーション	Abreviews	特記事項
WB		1/2000 - 1/10000. Detects a band of approximately 173 kDa (predicted molecular weight: 173 kDa).
IP		Use at 2-5 µg/mg of lysate.

## ターゲット情報

機能	May play a role in the regulation of RhoA GTPase by guanine nucleotide-binding alpha-12 (GNA12) and alpha-13 (GNA13). Acts as guanine nucleotide exchange factor (GEF) for RhoA GTPase and may act as GTPase-activating protein (GAP) for GNA12 and GNA13.
組織特異性	Ubiquitously expressed. Isoform 2 is found in jejunum and testis.
関連疾患	A chromosomal aberration involving ARHGEF12 may be a cause of acute leukemia. Translocation t(11;11)(q23;23) with KMT2A/MLL1.
配列類似性	Contains 1 DH (DBL-homology) domain. Contains 1 PDZ (DHR) domain. Contains 1 PH domain. Contains 1 RGSL (RGS-like) domain.
細胞内局在	Cytoplasm. Membrane. Translocated to the membrane upon stimulation.

## 画像



**All lanes :** Anti-LARG antibody (ab86095) at 0.1 µg/ml

**Lane 1 :** HeLa whole cell lysate at 50 µg

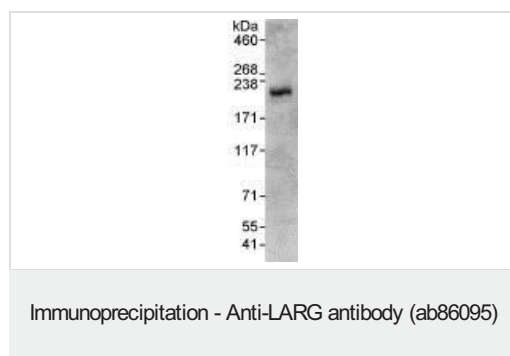
**Lane 2 :** HeLa whole cell lysate at 15 µg

**Lane 3 :** HeLa whole cell lysate at 5 µg

**Predicted band size:** 173 kDa

**Observed band size:** 173 kDa

**Exposure time:** 3 minutes



Detection of LARG by Western Blot of Immunoprecipitate.  
ab86095 at 1µg/ml staining LARG in HeLa whole cell lysate  
immunoprecipitated using ab86095 at 3µg/mg lysate (1 mg/IP; 20%  
of IP loaded/lane).  
Detection: Chemiluminescence with exposure time of 30 seconds.

**Please note:** All products are "FOR RESEARCH USE ONLY. NOT FOR USE IN DIAGNOSTIC PROCEDURES"

### Our Abpromise to you: Quality guaranteed and expert technical support

---

- Replacement or refund for products not performing as stated on the datasheet
- Valid for 12 months from date of delivery
- Response to your inquiry within 24 hours
- We provide support in Chinese, English, French, German, Japanese and Spanish
- Extensive multi-media technical resources to help you
- We investigate all quality concerns to ensure our products perform to the highest standards

If the product does not perform as described on this datasheet, we will offer a refund or replacement. For full details of the Abpromise, please visit <https://www.abcam.co.jp/abpromise> or contact our technical team.

### Terms and conditions

---

- Guarantee only valid for products bought direct from Abcam or one of our authorized distributors