


Anti-LAMTOR1 antibody ab121157

KO 評価済

画像数 5

製品の概要

製品名	Anti-LAMTOR1 antibody
製品の詳細	Rabbit polyclonal to LAMTOR1
由来種	Rabbit
アプリケーション	適用あり: IHC-P, WB
種交差性	交差種: Human 交差が予測される動物種: Mouse, Rat 
免疫原	Recombinant fragment, corresponding to amino acids 9-156 of Human LAMTOR1.
ポジティブ・コントロール	WB: HeLa, MCF7 and A549 cell lysates. IHC-P: Human skin, prostate, duodenum and tonsil tissue. A549 cell lysate
特記事項	<p>The Life Science industry has been in the grips of a reproducibility crisis for a number of years. Abcam is leading the way in addressing this with our range of recombinant monoclonal antibodies and knockout edited cell lines for gold-standard validation. Please check that this product meets your needs before purchasing.</p> <p>If you have any questions, special requirements or concerns, please send us an inquiry and/or contact our Support team ahead of purchase. Recommended alternatives for this product can be found below, along with publications, customer reviews and Q&As</p>

製品の特性

製品の状態	Liquid
保存方法	Shipped at 4°C. Store at -20°C.
バッファー	pH: 7.2
精製度	Immunogen affinity purified
ポリ/モノ	ポリクローナル
アイソタイプ	IgG

アプリケーション

The Abpromise guarantee

Abpromise保証は、次のテスト済みアプリケーションにおけるab121157の使用に適用されます

アプリケーションノートには、推奨の開始希釈率がありますが、適切な希釈率につきましてはご検討ください。

アプリケーション	Abreviews	特記事項
IHC-P		1/200 - 1/500. Perform heat mediated antigen retrieval with citrate buffer pH 6 before commencing with IHC staining protocol.
WB		Use a concentration of 0.04 - 0.4 µg/ml.

ターゲット情報

機能

Regulator of the TOR pathway, a signaling cascade that promotes cell growth in response to growth factors, energy levels, and amino acids. As part of the Ragulator complex, recruits the Rag GTPases and the mTORC1 complex to lysosomes, a key step in activation of the TOR signaling cascade by amino acids. Directly responsible for anchoring the Ragulator complex to membranes. Also required for late endosomes/lysosomes biogenesis it may regulate both the recycling of receptors through endosomes and the MAPK signaling pathway through recruitment of some of its components to late endosomes. May be involved in cholesterol homeostasis regulating LDL uptake and cholesterol release from late endosomes/lysosomes. May also play a role in RHOA activation.

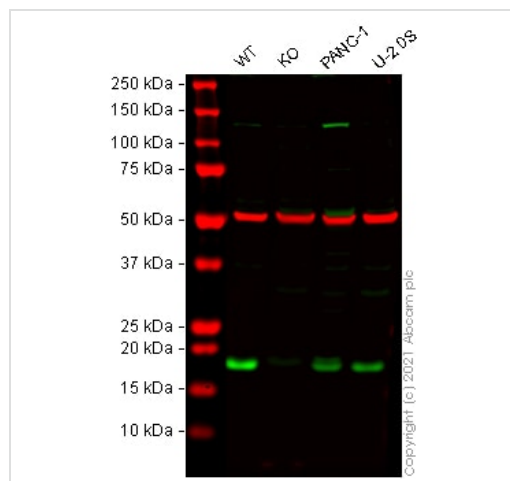
配列類似性

Belongs to the LAMTOR1 family.

細胞内局在

Late endosome membrane. Lysosome membrane. Cell membrane.

画像



Western blot - Anti-LAMTOR1 antibody (ab121157)

All lanes : Anti-LAMTOR1 antibody (ab121157) at 0.04 µg/ml

Lane 1 : Wild-type HeLa cell lysate

Lane 2 : LAMTOR1 knockout HeLa cell lysate

Lane 3 : PANC-1 cell lysate

Lane 4 : U-2 OS cell lysate

Lysates/proteins at 20 µg per lane.

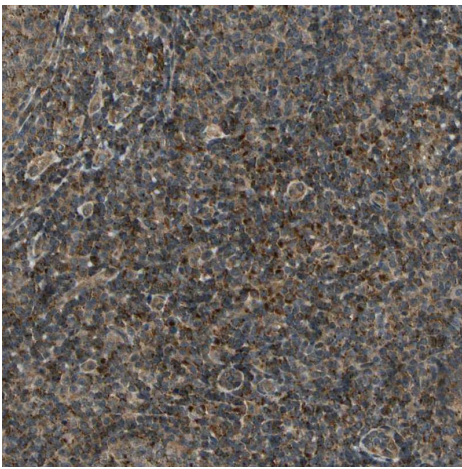
Performed under reducing conditions.

Observed band size: 18 kDa

Lanes 1 - 4: Merged signal (red and green). Green - ab121157 observed at 18 kDa. Red - loading control **ab7291** (Mouse anti-Alpha Tubulin [DM1A]) observed at 55 kDa.

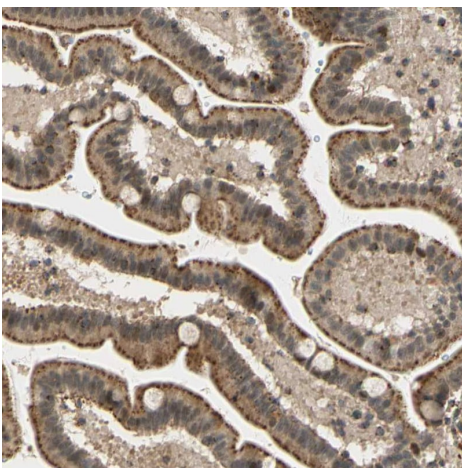
ab121157 was shown to react with LAMTOR1 in wild-type HeLa

cells in Western blot with loss of signal observed in LAMTOR1 knockout cell line **ab265351** (LAMTOR1 knockout cell lysate **ab258938**). Wild-type HeLa and LAMTOR1 knockout cell lysates were subjected to SDS-PAGE. Membranes were blocked in 3 % milk in TBS-T (0.1 % Tween[®]) before incubation with ab121157 and **ab7291** (Mouse anti-Alpha Tubulin [DM1A]) overnight at 4 °C at 0.04 µg/ml and a 1 in 20000 dilution respectively. Blots were incubated with Goat anti-Rabbit IgG H&L (IRDye[®] 800CW) preabsorbed (**ab216773**) and Goat anti-Mouse IgG H&L (IRDye[®] 680RD) preabsorbed (**ab216776**) secondary antibodies at 1 in 20000 dilution for 1 h at room temperature before imaging.



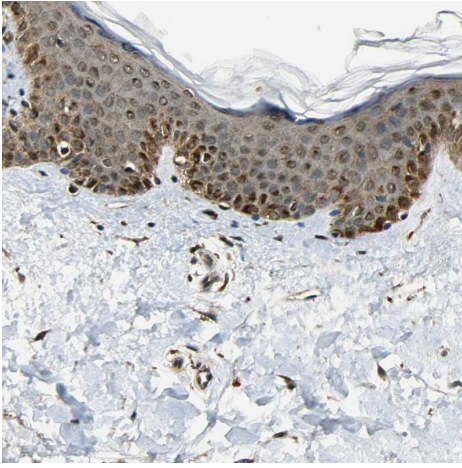
Immunohistochemistry (Formalin/PFA-fixed paraffin-embedded sections) - Anti-LAMTOR1 antibody (ab121157)

Immunohistochemistry analysis of human tonsil tissue labeling LAMTOR1 with ab121157 at 1/50 dilution. Strong positivity in non-germinal centre cells.



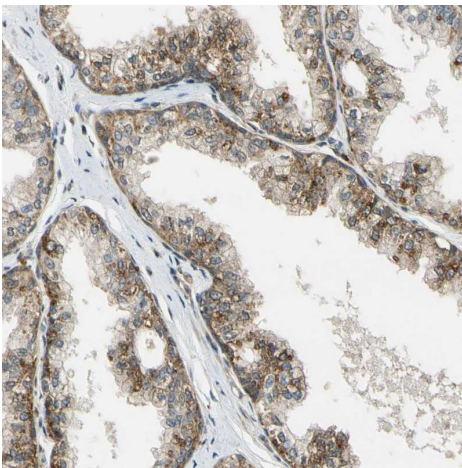
Immunohistochemistry (Formalin/PFA-fixed paraffin-embedded sections) - Anti-LAMTOR1 antibody (ab121157)

Immunohistochemistry analysis of human duodenum tissue labeling LAMTOR1 with ab121157 at 1/50 dilution. Strong positivity in glandular cells.



Immunohistochemistry analysis of human skin tissue labeling LAMTOR1 with ab121157 at 1/50 dilution. Strong positivity in squamous epithelial cells.

Immunohistochemistry (Formalin/PFA-fixed paraffin-embedded sections) - Anti-LAMTOR1 antibody (ab121157)



Immunohistochemistry analysis of human prostate tissue labeling LAMTOR1 with ab121157 at 1/50 dilution. Strong positivity in glandular cells.

Immunohistochemistry (Formalin/PFA-fixed paraffin-embedded sections) - Anti-LAMTOR1 antibody (ab121157)

Please note: All products are "FOR RESEARCH USE ONLY. NOT FOR USE IN DIAGNOSTIC PROCEDURES"

Our Abpromise to you: Quality guaranteed and expert technical support

- Replacement or refund for products not performing as stated on the datasheet
- Valid for 12 months from date of delivery
- Response to your inquiry within 24 hours
- We provide support in Chinese, English, French, German, Japanese and Spanish
- Extensive multi-media technical resources to help you
- We investigate all quality concerns to ensure our products perform to the highest standards

If the product does not perform as described on this datasheet, we will offer a refund or replacement. For full details of the Abpromise,

please visit <https://www.abcam.co.jp/abpromise> or contact our technical team.

Terms and conditions

- Guarantee only valid for products bought direct from Abcam or one of our authorized distributors