

Anti-LAMP2 antibody [GL2A7] ab13524

★★★★★ [13 Abreviews](#) [182 References](#) [画像数 2](#)

製品の概要

製品名	Anti-LAMP2 antibody [GL2A7]
製品の詳細	Rat monoclonal [GL2A7] to LAMP2
由来種	Rat
アプリケーション	適用あり: IHC-Fr, ICC, ICC/IF, IHC-FoFr, IP, Flow Cyt, WB, IHC-P
種交差性	交差種: Mouse, Rabbit, Human
免疫原	Tissue, cells or virus corresponding to Mouse LAMP2. Purified preparation of mouse liver lysosomal membranes.
ポジティブ・コントロール	WB: HEK-293 and NIH/3T3 cell lysate.
特記事項	<p>For maximum product recovery, after thawing, centrifuge the product vial before removing cap.</p> <p>The Life Science industry has been in the grips of a reproducibility crisis for a number of years. Abcam is leading the way in addressing this with our range of recombinant monoclonal antibodies and knockout edited cell lines for gold-standard validation. Please check that this product meets your needs before purchasing.</p> <p>If you have any questions, special requirements or concerns, please send us an inquiry and/or contact our Support team ahead of purchase. Recommended alternatives for this product can be found below, along with publications, customer reviews and Q&As</p>

製品の特性

製品の状態	Liquid
保存方法	Shipped at 4°C. Store at +4°C short term (1-2 weeks). Upon delivery aliquot. Store at -20°C or -80°C. Avoid freeze / thaw cycle.
バッファー	Preservative: 0.09% Sodium azide Constituents: PBS, 50% Glycerol
精製度	Protein G purified
ポリ/モノ	モノクローナル
クローン名	GL2A7
アイソタイプ	IgG

アプリケーション

The Abpromise guarantee

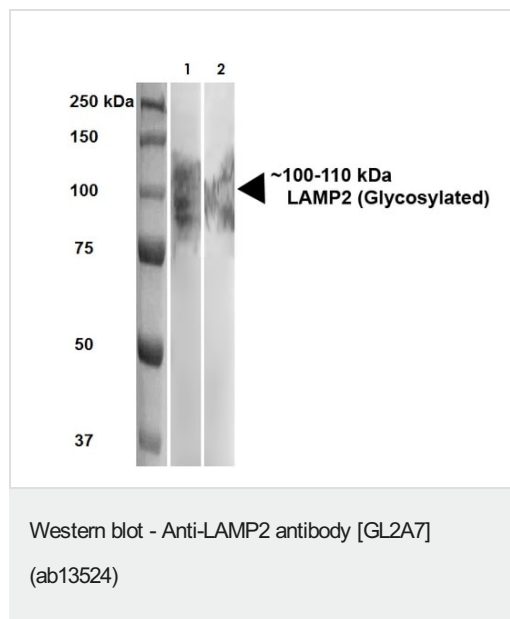
Abpromise保証は、次のテスト済みアプリケーションにおけるab13524の使用に適用されます

アプリケーションノートには、推奨の開始希釈率がありますが、適切な希釈率につきましてはご検討ください。

アプリケーション	Abreviews	特記事項
IHC-Fr	★★★★★ (2)	Use at an assay dependent concentration.
ICC		Use at an assay dependent concentration. Fix cells with methanol or with paraformaldehyde-lysine-periodate formulation. If the latter is used, permeabilize with saponin, not with Triton X-100 or NP-40. The antibody will label the presumptive lysosomes and late endosomes in cells that have been permeabilized with saponin 0.01%.
ICC/IF	★★★★★ (2)	Use at an assay dependent concentration. See Abreview.
IHC-FoFr	★★★★★ (1)	Use at an assay dependent concentration. (PubMed:17425404)
IP		Use at an assay dependent concentration. (PMID 2142158).
Flow Cyt		Use at an assay dependent concentration. ab37371 - Rat polyclonal IgG, is suitable for use as an isotype control with this antibody.
WB	★★★★★ (7)	1/500.
IHC-P	★★★★★ (1)	Use at an assay dependent concentration.

ターゲット情報

機能	Implicated in tumor cell metastasis. May function in protection of the lysosomal membrane from autodigestion, maintenance of the acidic environment of the lysosome, adhesion when expressed on the cell surface (plasma membrane), and inter-and intracellular signal transduction. Protects cells from the toxic effects of methylating mutagens.
組織特異性	Isoform LAMP-2A is highly expressed in placenta, lung and liver, less in kidney and pancreas, low in brain and skeletal muscle. Isoform LAMP-2B is highly expressed in skeletal muscle, less in brain, placenta, lung, kidney and pancreas, very low in liver.
関連疾患	Defects in LAMP2 are the cause of Danon disease (DAND) [MIM:300257]; also known as glycogen storage disease type 2B (GSD2B). DAND is a lysosomal glycogen storage disease characterized by the clinical triad of cardiomyopathy, vacuolar myopathy and mental retardation. It is often associated with an accumulation of glycogen in muscle and lysosomes.
配列類似性	Belongs to the LAMP family.
翻訳後修飾	O- and N-glycosylated; some of the 16 N-linked glycans are polylactosaminoglycans.
細胞内局在	Cell membrane. Endosome membrane. Lysosome membrane. This protein shuttles between lysosomes, endosomes, and the plasma membrane.
製品の状態	Alternative splicing produces 3 isoforms.



All lanes : Anti-LAMP2 antibody [GL2A7] (ab13524) at 1/500 dilution (1 hr at RT)

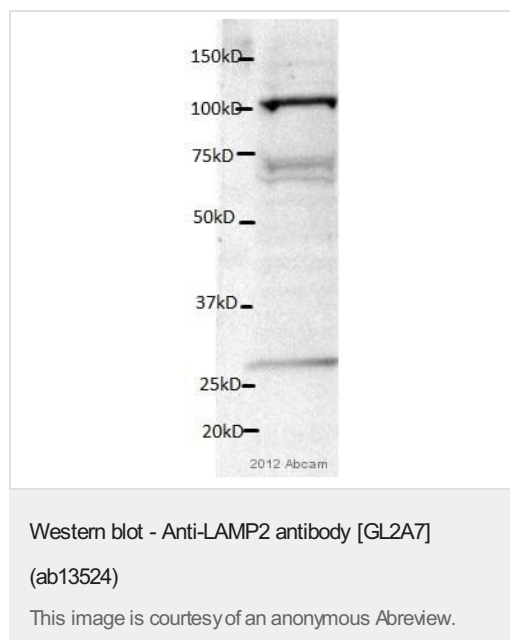
Lane 1 : HeLa (Human epithelial cell line from cervix adenocarcinoma) lysate at 20 µg

Lane 2 : NIH/3T3 (Mouse embryo fibroblast cell line) lysate at 10 µg

Secondary

All lanes : HRP Goat Anti-Rat, 1 hour at RT at 1/100 dilution

Block: 5% milk + TBST for 1 hour at RT.



Anti-LAMP2 antibody [GL2A7] (ab13524) at 1/1000 dilution + HEK293 cell lysate at 20 µg

Secondary

Goat anti-rat HRP at 1/5000 dilution

Developed using the ECL technique.

Performed under reducing conditions.

Observed band size: 105 kDa

Additional bands at: 28 kDa (possible non-specific binding), 70 kDa (possible non-specific binding)

Exposure time: 3 minutes

Blocked with 5% milk for 1 hour at RT.

Incubated with primary antibody in 5% BSA/TBST for 16 hours at 4°C.

Please note: All products are "FOR RESEARCH USE ONLY. NOT FOR USE IN DIAGNOSTIC PROCEDURES"

Our Abpromise to you: Quality guaranteed and expert technical support

- Replacement or refund for products not performing as stated on the datasheet
- Valid for 12 months from date of delivery
- Response to your inquiry within 24 hours

- We provide support in Chinese, English, French, German, Japanese and Spanish
- Extensive multi-media technical resources to help you
- We investigate all quality concerns to ensure our products perform to the highest standards

If the product does not perform as described on this datasheet, we will offer a refund or replacement. For full details of the Abpromise, please visit <https://www.abcam.co.jp/abpromise> or contact our technical team.

Terms and conditions

- Guarantee only valid for products bought direct from Abcam or one of our authorized distributors