




# Anti-LAMP2 antibody ab203224

**11 References**   **画像数 2**

### 製品の概要

製品名	Anti-LAMP2 antibody
製品の詳細	Rabbit polyclonal to LAMP2
由来種	Rabbit
アプリケーション	<b>適用あり:</b> WB
種交差性	<b>交差種:</b> Mouse <b>交差が予測される動物種:</b> Human 
免疫原	<p>Synthetic peptide within Human LAMP2 aa 300-400 conjugated to keyhole limpet haemocyanin. The exact immunogen sequence used to generate this antibody is proprietary information. If additional detail on the immunogen is needed to determine the suitability of the antibody for your needs, please <b>contact</b> our Scientific Support team to discuss your requirements.</p> <p>Database link: <b><u>P13473</u></b></p> <p style="text-align: right;">  <b>Run BLAST with</b>                 <b>Run BLAST with</b> </p>
ポジティブ・コントロール	WB: Mouse intestine, liver and placenta lysates.
特記事項	<p>The Life Science industry has been in the grips of a reproducibility crisis for a number of years. Abcam is leading the way in addressing this with our range of recombinant monoclonal antibodies and knockout edited cell lines for gold-standard validation. Please check that this product meets your needs before purchasing.</p> <p>If you have any questions, special requirements or concerns, please send us an inquiry and/or contact our Support team ahead of purchase. Recommended alternatives for this product can be found below, along with publications, customer reviews and Q&amp;As</p>

### 製品の特性

製品の状態	Liquid
保存方法	Shipped at 4°C. Store at +4°C short term (1-2 weeks). Upon delivery aliquot. Store at -20°C long term. Avoid freeze / thaw cycle.
バッファー	<p>pH: 7.40</p> <p>Preservative: 0.02% Proclin 300</p> <p>Constituents: 50% Glycerol (glycerin, glycerine), 1% BSA, 48.98% TBS, 1X</p> <p>Aqueous buffered solution.</p>

精製度	Protein A purified
ポリ/モノ	ポリクローナル
アイソタイプ	IgG

アプリケーション

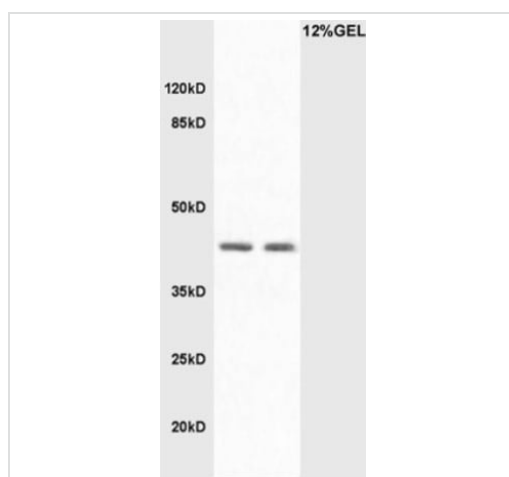
**The Abpromise guarantee**      **Abpromise保証は、**次のテスト済みアプリケーションにおけるab203224の使用に適用されます  
 アプリケーションノートには、推奨の開始希釈率がありますが、適切な希釈率につきましてはご検討ください。

アプリケーション	Abreviews	特記事項
WB		1/100 - 1/1000. Predicted molecular weight: 45 kDa.

ターゲット情報

機能	Implicated in tumor cell metastasis. May function in protection of the lysosomal membrane from autodigestion, maintenance of the acidic environment of the lysosome, adhesion when expressed on the cell surface (plasma membrane), and inter-and intracellular signal transduction. Protects cells from the toxic effects of methylating mutagens.
組織特異性	Isoform LAMP-2A is highly expressed in placenta, lung and liver, less in kidney and pancreas, low in brain and skeletal muscle. Isoform LAMP-2B is highly expressed in skeletal muscle, less in brain, placenta, lung, kidney and pancreas, very low in liver.
関連疾患	Defects in LAMP2 are the cause of Danon disease (DAND) [MIM:300257]; also known as glycogen storage disease type 2B (GSD2B). DAND is a lysosomal glycogen storage disease characterized by the clinical triad of cardiomyopathy, vacuolar myopathy and mental retardation. It is often associated with an accumulation of glycogen in muscle and lysosomes.
配列類似性	Belongs to the LAMP family.
翻訳後修飾	O- and N-glycosylated; some of the 16 N-linked glycans are polylactosaminoglycans.
細胞内局在	Cell membrane. Endosome membrane. Lysosome membrane. This protein shuttles between lysosomes, endosomes, and the plasma membrane.
製品の状態	Alternative splicing produces 3 isoforms.

画像



Western blot - Anti-LAMP2 antibody (ab203224)

**All lanes :** Anti-LAMP2 antibody (ab203224) at 1/200 dilution

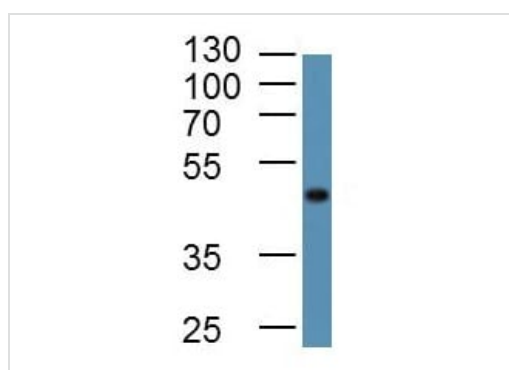
**Lane 1 :** Mouse intestine lysate

**Lane 2 :** Mouse liver lysate

#### Secondary

**All lanes :** Goat Anti-Rabbit IgG Antibody (H+L), HRP Conjugated at 1/3000 dilution

**Predicted band size:** 45 kDa



Western blot - Anti-LAMP2 antibody (ab203224)

Anti-LAMP2 antibody (ab203224) at 1/100 dilution + Mouse placenta lysate

**Predicted band size:** 45 kDa

**Please note:** All products are "FOR RESEARCH USE ONLY. NOT FOR USE IN DIAGNOSTIC PROCEDURES"

#### Our Abpromise to you: Quality guaranteed and expert technical support

- Replacement or refund for products not performing as stated on the datasheet
- Valid for 12 months from date of delivery
- Response to your inquiry within 24 hours
- We provide support in Chinese, English, French, German, Japanese and Spanish

- Extensive multi-media technical resources to help you
- We investigate all quality concerns to ensure our products perform to the highest standards

If the product does not perform as described on this datasheet, we will offer a refund or replacement. For full details of the Abpromise, please visit <https://www.abcam.co.jp/abpromise> or contact our technical team.

#### **Terms and conditions**

---

- Guarantee only valid for products bought direct from Abcam or one of our authorized distributors