


# Anti-LAMP1 antibody - Lysosome Marker ab24170

★★★★★ [96 Abreviews](#) [668 References](#) [画像数 6](#)

### 製品の概要

製品名	Anti-LAMP1 antibody - Lysosome Marker
製品の詳細	Rabbit polyclonal to LAMP1 - Lysosome Marker
由来種	Rabbit
アプリケーション	<b>適用あり:</b> IHC-P, WB
種交差性	<b>交差種:</b> Human <b>交差が予測される動物種:</b> Mouse, Rat, Chicken, Hamster, Cow, Cat, Dog, Xenopus laevis, Monkey, Zebrafish, African green monkey 
免疫原	Synthetic peptide corresponding to Human LAMP1 aa 400 to the C-terminus (C terminal) conjugated to keyhole limpet haemocyanin. (Peptide available as <a href="#">ab25744</a> )
特記事項	<p>The Life Science industry has been in the grips of a reproducibility crisis for a number of years. Abcam is leading the way in addressing this with our range of recombinant monoclonal antibodies and knockout edited cell lines for gold-standard validation. Please check that this product meets your needs before purchasing.</p> <p>If you have any questions, special requirements or concerns, please send us an inquiry and/or contact our Support team ahead of purchase. Recommended alternatives for this product can be found below, along with publications, customer reviews and Q&amp;As</p>

### 製品の特性

製品の状態	Liquid
保存方法	Shipped at 4°C. Store at +4°C short term (1-2 weeks). Upon delivery aliquot. Store at -20°C or -80°C. Avoid freeze / thaw cycle.
バッファー	pH: 7.40 Preservative: 0.02% Sodium azide Constituent: PBS
精製度	Batches of this product that have a concentration < 1mg/ml may have BSA added as a stabilising agent. If you would like information about the formulation of a specific lot, please contact our scientific support team who will be happy to help. Immunogen affinity purified

ポリモノ

ポリクローナル

アイソタイプ

IgG

アプリケーション

The Abpromise guarantee

Abpromise保証は、次のテスト済みアプリケーションにおけるab24170の使用に適用されます

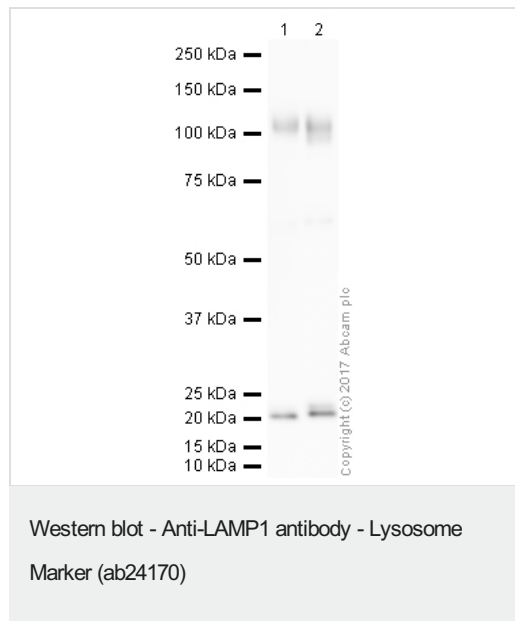
アプリケーションノートには、推奨の開始希釈率がありますが、適切な希釈率につきましてはご確認ください。

アプリケーション	Abreviews	特記事項
IHC-P	★★★★★ (10)	Use a concentration of 1 µg/ml. Perform heat mediated antigen retrieval before commencing with IHC staining protocol.
WB	★★★★☆ (37)	Use a concentration of 1 µg/ml. Detects a band of approximately 90-130 kDa (predicted molecular weight: 120 kDa). Some variability in MW may be observed due to differing levels of glycosylation of the target protein in different cell/tissue types. Abcam recommends using Milk as the blocking agent.

ターゲット情報

機能	Presents carbohydrate ligands to selectins. Also implicated in tumor cell metastasis.
配列類似性	Belongs to the LAMP family.
翻訳後修飾	O- and N-glycosylated; some of the 18 N-linked glycans are polylactosaminoglycans.
細胞内局在	Cell membrane. Endosome membrane. Lysosome membrane. This protein shuttles between lysosomes, endosomes, and the plasma membrane.

画像



All lanes : Anti-LAMP1 antibody - Lysosome Marker (ab24170) at 1 µg/ml

Lane 1 : Jurkat (Human) Whole Cell Lysate

Lane 2 : HEK293 (Human) Whole Cell Lysate

Lysates/proteins at 10 µg per lane.

Secondary

All lanes : Goat polyclonal to Rabbit IgG - H&L - Pre-Adsorbed at 1/50000 dilution

Developed using the ECL technique.

Performed under reducing conditions.

**Predicted band size:** 120 kDa

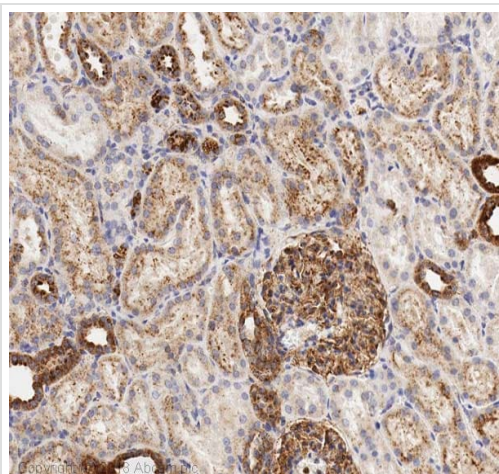
**Observed band size:** 120 kDa

**Additional bands at:** 20 kDa. We are unsure as to the identity of these extra bands.

**Exposure time:** 8 minutes

This blot was produced using a 4-12% Bis-tris gel under the MOPS buffer system. The gel was run at 200V for 50 minutes before being transferred onto a Nitrocellulose membrane at 30V for 70 minutes. The membrane was then blocked for an hour using 3% Milk before being incubated with ab24170 overnight at 4°C. Antibody binding was detected using an anti-rabbit antibody conjugated to HRP, and visualised using ECL development solution [ab133406](#).

Abcam recommends using milk as the blocking agent. Abcam welcomes customer feedback and would appreciate any comments regarding this product and the data presented above.

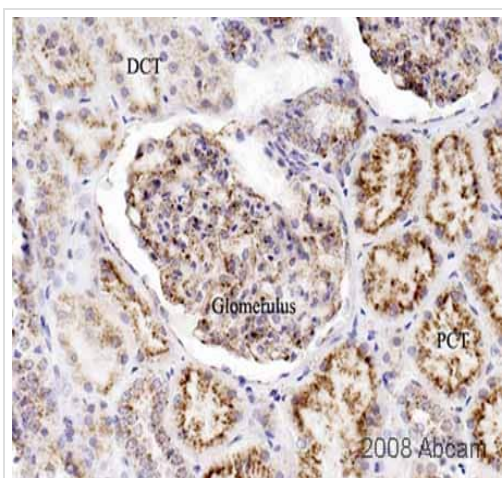


Immunohistochemistry (Formalin/PFA-fixed paraffin-embedded sections) - Anti-LAMP1 antibody - Lysosome Marker (ab24170)

IHC image of LAMP1 staining in a section of formalin-fixed paraffin-embedded normal human kidney\* performed on a Leica BOND™ system using the standard protocol B. The section was pre-treated using heat mediated antigen retrieval with sodium citrate buffer (pH6, epitope retrieval solution 1) for 20mins. The section was then incubated with ab24170, 1ug/ml, for 15 mins at room temperature and detected using an HRP conjugated compact polymer system. DAB was used as the chromogen. The section was then counterstained with haematoxylin and mounted with DPX. The inset secondary-only control image is taken from an identical assay without primary antibody.

For other IHC staining systems (automated and non-automated) customers should optimize variable parameters such as antigen retrieval conditions, primary antibody concentration and antibody incubation times.

*\*Tissue obtained from the Human Research Tissue Bank, supported by the NIHR Cambridge Biomedical Research Centre*

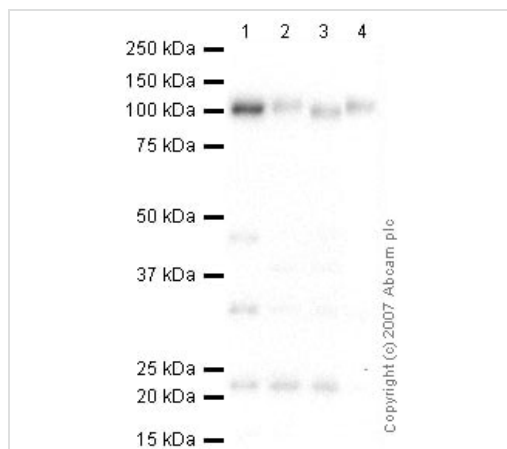


Immunohistochemistry (Formalin/PFA-fixed paraffin-embedded sections) - Anti-LAMP1 antibody -

Lysosome Marker (ab24170)

This image is courtesy of an Abreview submitted by Mr Carl Hobbs

ab24170 staining LAMP1 in human kidney tissue sections. Staining correlates with lysosomal specificity, particularly in the proximal convoluted tubules where lysosomes are enriched. Formalin/PFA-fixed human kidney tissue sections were incubated with ab24170 (1/200) for 2 hours. Antigen retrieval was performed by heat induction in citrate buffer pH 6. Please see accompanying abreview for additional information.



Western blot - Anti-LAMP1 antibody - Lysosome Marker (ab24170)

**All lanes** : Anti-LAMP1 antibody - Lysosome Marker (ab24170) at 1 µg/ml

**Lane 1** : Jurkat (Human T cell lymphoblast-like cell line) Whole Cell Lysate

**Lane 2** : A431 (Human epithelial carcinoma cell line) Whole Cell Lysate

**Lane 3** : HEK293 Human embryonic kidney cell line Whole Cell Lysate

**Lane 4** : MCF7 (Human breast adenocarcinoma cell line) Whole Cell Lysate

Lysates/proteins at 10 µg per lane.

### Secondary

**All lanes** : Goat polyclonal to Rabbit IgG - H&L - Pre-Adsorbed at 1/3000 dilution

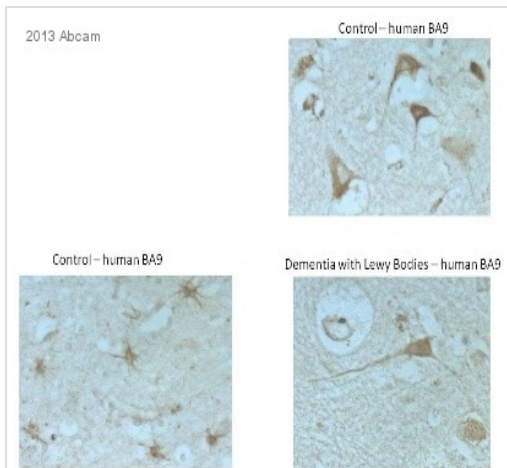
Performed under reducing conditions.

**Predicted band size:** 120 kDa

**Observed band size:** 120 kDa

**Additional bands at:** 23 kDa, 35 kDa, 45 kDa. We are unsure as

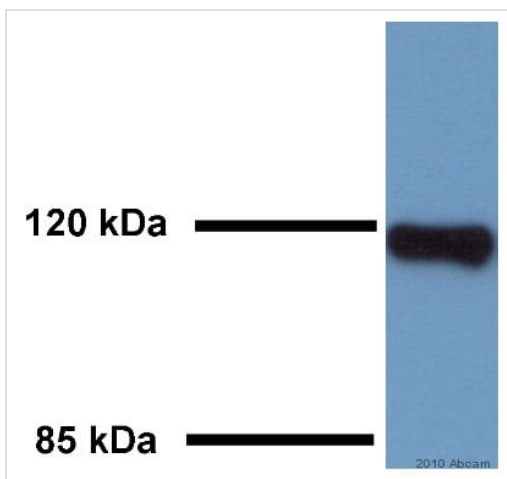
to the identity of these extra bands.



Immunohistochemistry (Formalin/PFA-fixed paraffin-embedded sections) - Anti-LAMP1 antibody - Lysosome Marker (ab24170)

This image is courtesy of an abreview submitted by Dr. Martin Broadstock (King's College London, United Kingdom)

IHC-P image of LAMP1 staining on human Cortex sections using ab24170 (1:400). The sections were deparaffinized and subjected to heat mediated antigen retrieval using citric acid. The sections were then permeabilized using 0.05% Tween-20 and blocking was performed using 3% BSA for 1 hour at 21°C. The primary antibody ab24170 was diluted using 3% BSA with 0.05% Tween-20 in PBS and incubated with the sections for 18 hours at 4°C. The secondary antibody used was Goat polyclonal to rabbit IgG conjugated to biotin (1:500)



Western blot - Anti-LAMP1 antibody - Lysosome Marker (ab24170)

This image is courtesy of an anonymous Abreview

Anti-LAMP1 antibody - Lysosome Marker (ab24170) at 1/700 dilution (in 5% milk for 4 hours at 20°C) + Rat Kidney - whole tissue lysate at 18 µg

#### Secondary

An HRP-conjugated Goat anti-rabbit IgG polyclonal at 1/5000 dilution

Developed using the ECL technique.

Performed under reducing conditions.

**Predicted band size:** 120 kDa

**Observed band size:** 120 kDa

**Exposure time:** 5 minutes

**Blocking Step:** 5% Milk for 1 hour at 20°C

**Please note:** All products are "FOR RESEARCH USE ONLY. NOT FOR USE IN DIAGNOSTIC PROCEDURES"

### **Our Abpromise to you: Quality guaranteed and expert technical support**

---

- Replacement or refund for products not performing as stated on the datasheet
- Valid for 12 months from date of delivery
- Response to your inquiry within 24 hours
  
- We provide support in Chinese, English, French, German, Japanese and Spanish
- Extensive multi-media technical resources to help you
- We investigate all quality concerns to ensure our products perform to the highest standards

If the product does not perform as described on this datasheet, we will offer a refund or replacement. For full details of the Abpromise, please visit <https://www.abcam.co.jp/abpromise> or contact our technical team.

### **Terms and conditions**

---

- Guarantee only valid for products bought direct from Abcam or one of our authorized distributors