

Anti-LAMP1 antibody [LY1C6] ab13523

★★★★★ [3 Abreviews](#) [26 References](#) [画像数 3](#)

製品の概要

製品名	Anti-LAMP1 antibody [LY1C6]
製品の詳細	Mouse monoclonal [LY1C6] to LAMP1
由来種	Mouse
アプリケーション	適用あり: ICC, WB
種交差性	交差種: Rat, Human
免疫原	Tissue, cells or virus corresponding to Rat LAMP1. Rat liver lysosomal membrane preparations
ポジティブ・コントロール	Highly purified rat lysosomal membrane preparations.
特記事項	<p>For maximum product recovery centrifuge the product vial before removing cap.</p> <p>The Life Science industry has been in the grips of a reproducibility crisis for a number of years. Abcam is leading the way in addressing this with our range of recombinant monoclonal antibodies and knockout edited cell lines for gold-standard validation. Please check that this product meets your needs before purchasing.</p> <p>If you have any questions, special requirements or concerns, please send us an inquiry and/or contact our Support team ahead of purchase. Recommended alternatives for this product can be found below, along with publications, customer reviews and Q&As</p>

製品の特性

製品の状態	Liquid
保存方法	Shipped at 4°C. Upon delivery aliquot and store at -20°C. Avoid freeze / thaw cycles.
バッファー	Preservative: 0.09% Sodium azide Constituents: PBS, 50% Glycerol (glycerin, glycerine)
精製度	Protein G purified
ポリ/モノ	モノクローナル
クローン名	LY1C6
アイソタイプ	IgG1

アプリケーション

The Abpromise guarantee

Abpromise保証は、次のテスト済みアプリケーションにおけるab13523の使用に適用されます

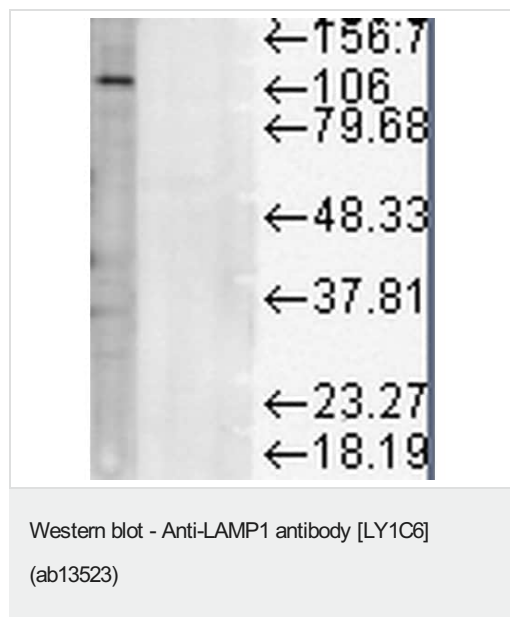
アプリケーションノートには、推奨の開始希釈率がありますが、適切な希釈率につきましてはご確認ください。

アプリケーション	Abreviews	特記事項
ICC	★★★★★ (1)	Use at an assay dependent concentration.
WB		Use a concentration of 1 µg/ml. Detects a band of approximately 120 kDa.

ターゲット情報

機能	Presents carbohydrate ligands to selectins. Also implicated in tumor cell metastasis.
配列類似性	Belongs to the LAMP family.
翻訳後修飾	O- and N-glycosylated; some of the 18 N-linked glycans are polylactosaminoglycans.
細胞内局在	Cell membrane. Endosome membrane. Lysosome membrane. This protein shuttles between lysosomes, endosomes, and the plasma membrane.

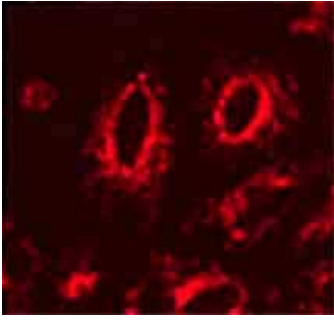
画像



Anti-LAMP1 antibody [LY1C6] (ab13523) at 1/1000 dilution + Rat liver microsome lysate at 15 µg

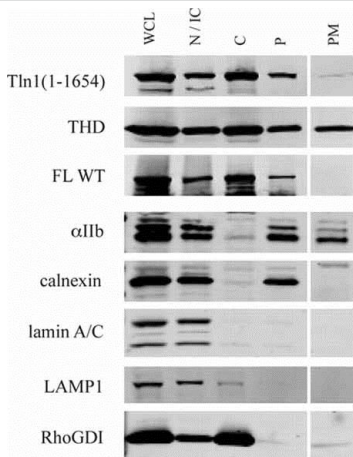
Secondary

Sheep Anti-Mouse IgG: HRP



Immunocytochemistry - Anti-LAMP1 antibody
[LY1C6] (ab13523)

ab13523 at 1/100 dilution staining LAMP1 in LAMP1 transfected HeLa cells by Immunocytochemistry/ immunofluorescence. A Alexa Fluor® 568 conjugated goat anti mouse was used at 1/50 dilution as secondary.



Western blot - Anti-LAMP1 antibody [LY1C6]
(ab13523)

Image from Banno A et al, J Biol Chem. 2012 Apr 20;287(17):13799-812. Epub 2012 Feb 18, Fig 4. DOI 10.1074/jbc.M112.341214 April 20, 2012 The Journal of Biological Chemistry, 287, 13799-13812.

ab13523 used in Western Blot. Lysates prepared from CHO cells stably expressing allβ3 integrins (A5 cells) were used. WCL, N/IC, C, P, and PM indicate whole cell lysates, nuclear/intact cell, cytosolic, high-speed pellet, and plasma membrane fractions, respectively.

Please note: All products are "FOR RESEARCH USE ONLY. NOT FOR USE IN DIAGNOSTIC PROCEDURES"

Our Abpromise to you: Quality guaranteed and expert technical support

- Replacement or refund for products not performing as stated on the datasheet
- Valid for 12 months from date of delivery
- Response to your inquiry within 24 hours
- We provide support in Chinese, English, French, German, Japanese and Spanish
- Extensive multi-media technical resources to help you
- We investigate all quality concerns to ensure our products perform to the highest standards

If the product does not perform as described on this datasheet, we will offer a refund or replacement. For full details of the Abpromise, please visit <https://www.abcam.co.jp/abpromise> or contact our technical team.

Terms and conditions

- Guarantee only valid for products bought direct from Abcam or one of our authorized distributors