

Anti-LAMP1 antibody [EPR4204] - Lysosome Marker ab108597

KO 評価済 リコンビナント RabMAb

★★★★☆ 4 Abreviews 11 References 画像数 7

製品の概要

製品名	Anti-LAMP1 antibody [EPR4204] - Lysosome Marker
製品の詳細	Rabbit monoclonal [EPR4204] to LAMP1 - Lysosome Marker
由来種	Rabbit
アプリケーション	適用あり: WB, IHC-P 適用なし: Flow Cyt, ICC/IF or IP
種交差性	交差種: Human
免疫原	Synthetic peptide. This information is proprietary to Abcam and/or its suppliers.
ポジティブ・コントロール	WB: HeLa, JAR, A431 and Jurkat lysates. IHC-P: human liver carcinoma and kidney tissue.
特記事項	<p>This product is a recombinant monoclonal antibody, which offers several advantages including:</p> <ul style="list-style-type: none"> - High batch-to-batch consistency and reproducibility - Improved sensitivity and specificity - Long-term security of supply - Animal-free production <p>For more information see here.</p> <p>Our RabMAb® technology is a patented hybridoma-based technology for making rabbit monoclonal antibodies. For details on our patents, please refer to RabMAb® patents.</p> <p>Mouse, Rat: We have preliminary internal testing data to indicate this antibody may not react with these species. Please contact us for more information.</p>

製品の特性

製品の状態	Liquid
保存方法	Shipped at 4°C. Store at -20°C. Stable for 12 months at -20°C.
バッファー	pH: 7.2 Preservative: 0.01% Sodium azide Constituents: PBS, 40% Glycerol, 0.05% BSA
精製度	Protein A purified
ポリ/モノ	モノクローナル
クローン名	EPR4204

アイソタイプIgG

アプリケーション

The Abpromise guarantee **Abpromise保証は、次のテスト済みアプリケーションにおけるab108597の使用に適用されます**
アプリケーションノートには、推奨の開始希釈率がありますが、適切な希釈率につきましてはご検討ください。

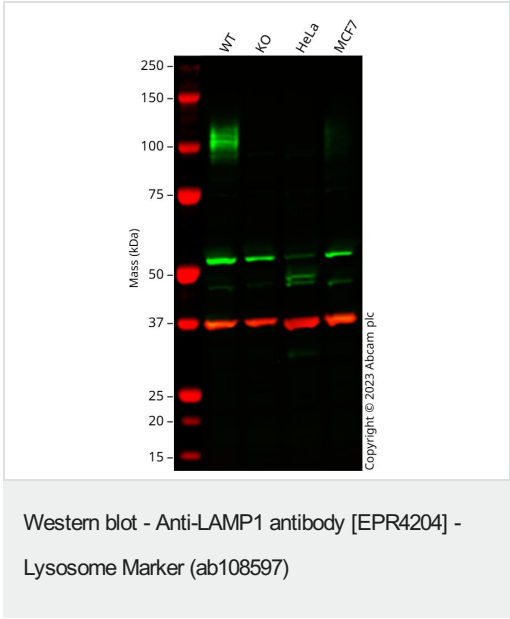
アプリケーション	Abreviews	特記事項
WB	★★★★★ (2)	1/1000 - 1/10000. Detects a band of approximately 120 kDa (predicted molecular weight: 45 kDa).
IHC-P	★★★★★ (1)	1/100 - 1/400. Perform heat mediated antigen retrieval with citrate buffer pH 6 before commencing with IHC staining protocol.

追加情報 Is unsuitable for Flow Cyt, ICC/IF or IP.

ターゲット情報

機能	Presents carbohydrate ligands to selectins. Also implicated in tumor cell metastasis.
配列類似性	Belongs to the LAMP family.
翻訳後修飾	O- and N-glycosylated; some of the 18 N-linked glycans are polylactosaminoglycans.
細胞内局在	Cell membrane. Endosome membrane. Lysosome membrane. This protein shuttles between lysosomes, endosomes, and the plasma membrane.

画像



All lanes : Anti-LAMP1 antibody [EPR4204] - Lysosome Marker (ab108597) at 1/1000 dilution

- Lane 1 :** Wild-type HCT 116 cell lysate
- Lane 2 :** LAMP1 knockout HCT 116 cell lysate
- Lane 3 :** HeLa cell lysate
- Lane 4 :** MCF7 cell lysate

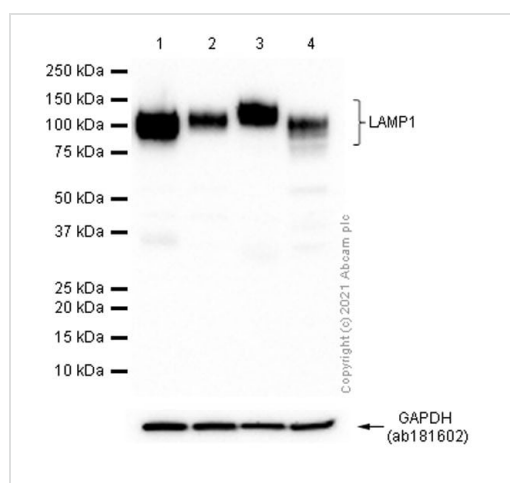
Lysates/proteins at 20 µg per lane.

Performed under reducing conditions.

Predicted band size: 45 kDa
Observed band size: 100-120 kDa

Western blot: Anti-LAMP1 antibody [EPR4204] - Lysosome Marker

staining at 1/1000 dilution, shown in green; Mouse anti-GAPDH antibody [6C5] ([ab8245](#)) loading control staining at 1/20000 dilution, shown in red. In Western blot, ab108597 was shown to bind specifically to LAMP1. A band was observed at 100-120 kDa in wild-type HCT 116 cell lysates with no signal observed at this size in LAMP1 knockout cell line. To generate this image, wild-type and LAMP1 knockout HCT 116 cell lysates were analysed. First, samples were run on an SDS-PAGE gel then transferred onto a nitrocellulose membrane. Membranes were blocked in 3% milk in TBS-0.1% Tween[®] 20 (TBS-T) before incubation with primary antibodies overnight at 4°C. Blots were washed four times in TBS-T, incubated with secondary antibodies for 1 h at room temperature, washed again four times then imaged. Secondary antibodies used were Goat anti-Rabbit IgG H&L 800CW and Goat anti-Mouse IgG H&L 680RD at 1/20000 dilution.



Western blot - Anti-LAMP1 antibody [EPR4204] - Lysosome Marker (ab108597)

All lanes : Anti-LAMP1 antibody [EPR4204] - Lysosome Marker (ab108597) at 1/5000 dilution

Lane 1 : HeLa (human cervix adenocarcinoma epithelial cell) whole cell lysate 20µg

Lane 2 : Jurkat (Human T cell leukemia T lymphocyte) whole cell lysate 20µg

Lane 3 : HepG2 (human hepatocellular carcinoma epithelial cell) whole cell lysate 20µg

Lane 4 : MCF7 (human breast adenocarcinoma epithelial cell) whole cell lysate 20µg

Secondary

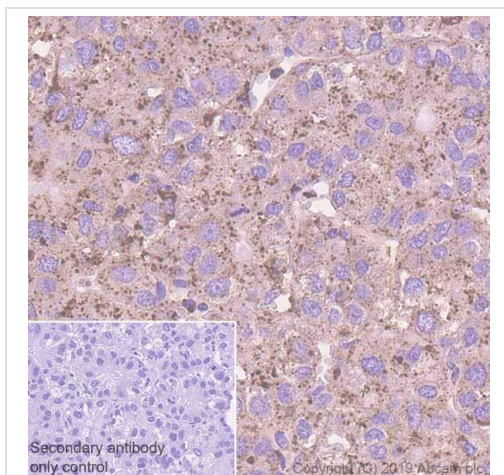
All lanes : Goat Anti-Rabbit IgG H&L (HRP) ([ab97051](#)) at 1/20000 dilution

Predicted band size: 45 kDa

Observed band size: 110 kDa

Exposure time: 5 seconds

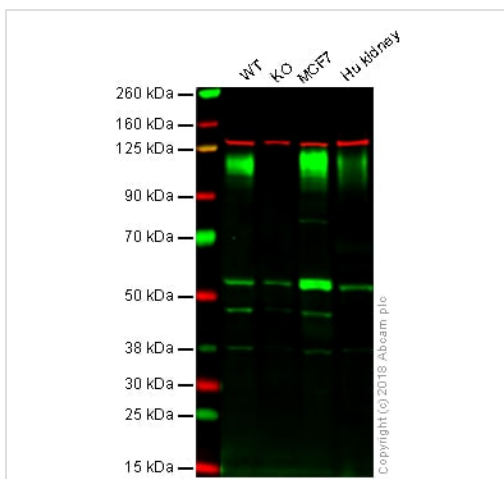
LAMP1 is a glycoprotein. The molecular weight observed is consistent with what has been described in the literature (PMID: 27061067, 15111122).



Immunohistochemistry (Formalin/PFA-fixed paraffin-embedded sections) - Anti-LAMP1 antibody [EPR4204] - Lysosome Marker (ab108597)

Immunohistochemistry (Formalin/PFA-fixed paraffin-embedded sections) analysis of human liver carcinoma tissue sections labeling LAMP1 with purified ab108597 at 1/400 dilution (0.36 µg/ml). Heat mediated antigen retrieval using Bond™ Epitope Retrieval Solution 2 (pH 9.0). Rabbit specific IHC polymer detection kit HRP/DAB (**ab209101**) was used as the secondary antibody.

Negative control: PBS instead of the primary antibody. Hematoxylin was used as a counterstain.



Western blot - Anti-LAMP1 antibody [EPR4204] - Lysosome Marker (ab108597)

All lanes : Anti-LAMP1 antibody [EPR4204] - Lysosome Marker (ab108597) at 1/1000 dilution

Lane 1 : Wild-type HAP1 whole cell lysate

Lane 2 : LAMP1 knockout HAP1 whole cell lysate

Lane 3 : MCF7 whole cell lysate

Lane 4 : Human Kidney whole cell lysate

Lysates/proteins at 20 µg per lane.

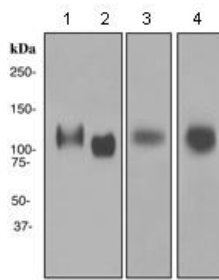
Predicted band size: 45 kDa

Observed band size: 110 kDa

Lanes 1 -4: Merged signal (red and green). Green - unpurified ab108597 observed at 110 kDa. Red - loading control, **ab18058**, observed at 130 kDa.

ab108597 was shown to recognize LAMP1 in wild-type HAP1 cells as signal was lost at the expected MW in LAMP1 knockout cells. Additional cross-reactive bands were observed in the wild-type and knockout cells. Wild-type and LAMP1 knockout samples were subjected to SDS-PAGE. ab108597 and **ab18058** (Mouse anti-Vinculin loading control) were incubated overnight at 4°C at 1/1000 dilution and 1/20000 dilution respectively. Blots were developed with Goat anti-Rabbit IgG H&L (IRDye® 800CW) preabsorbed **ab216773** and Goat anti-Mouse IgG H&L (IRDye® 680RD)

preabsorbed **ab216776** secondary antibodies at 1/10000 dilution for 1 hour at room temperature before imaging.



Western blot - Anti-LAMP1 antibody [EPR4204] - Lysosome Marker (ab108597)

All lanes : Anti-LAMP1 antibody [EPR4204] - Lysosome Marker (ab108597) at 1/1000 dilution ((unpurified))

Lane 1 : HeLa cell lysate

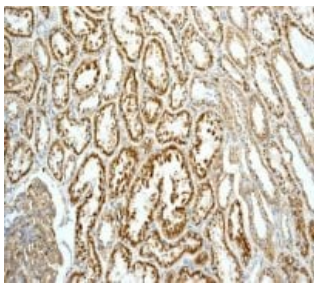
Lane 2 : JAR cell lysate

Lane 3 : Jurkat cell lysate

Lane 4 : A431 cell lysate

Lysates/proteins at 10 µg per lane.

Predicted band size: 45 kDa

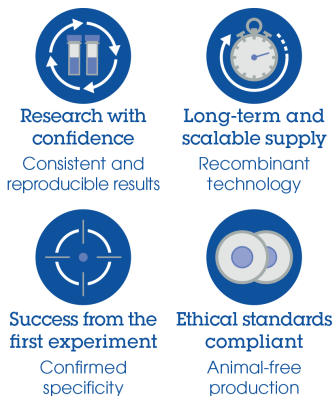


Immunohistochemistry (Formalin/PFA-fixed paraffin-embedded sections) - Anti-LAMP1 antibody [EPR4204] - Lysosome Marker (ab108597)

Immunohistochemical analysis of LAMP1 in paraffin embedded Human kidney tissue, using unpurified ab108597 at a dilution of 1/100.

Perform heat mediated antigen retrieval with citrate buffer pH 6 before commencing with IHC staining protocol.

Why choose a recombinant antibody?



Anti-LAMP1 antibody [EPR4204] - Lysosome Marker (ab108597)

Please note: All products are "FOR RESEARCH USE ONLY. NOT FOR USE IN DIAGNOSTIC PROCEDURES"

Our Abpromise to you: Quality guaranteed and expert technical support

- Replacement or refund for products not performing as stated on the datasheet
- Valid for 12 months from date of delivery
- Response to your inquiry within 24 hours
- We provide support in Chinese, English, French, German, Japanese and Spanish
- Extensive multi-media technical resources to help you
- We investigate all quality concerns to ensure our products perform to the highest standards

If the product does not perform as described on this datasheet, we will offer a refund or replacement. For full details of the Abpromise, please visit <https://www.abcam.co.jp/abpromise> or contact our technical team.

Terms and conditions

- Guarantee only valid for products bought direct from Abcam or one of our authorized distributors