

### Anti-Laminin beta 1 antibody [DG10] ab88279

画像数 1

#### 製品の概要

製品名	Anti-Laminin beta 1 antibody [DG10]
製品の詳細	Mouse monoclonal [DG10] to Laminin beta 1
由来種	Mouse
特異性	ab88279 appears to react with the NH <sub>2</sub> terminus of Laminin beta 1.
アプリケーション	<b>適用あり:</b> IHC-P
種交差性	<b>交差種:</b> Human
免疫原	Tissue, cells or virus corresponding to Human Laminin beta 1. Partially pepsin digested Laminins from human placenta.
ポジティブ・コントロール	IHC-P: Fetal kidney
特記事項	<p>ab88279 is derived from the hybridoma produced by fusion between myeloma cells and Balb/c spleen cells.</p> <p>The Life Science industry has been in the grips of a reproducibility crisis for a number of years. Abcam is leading the way in addressing this with our range of recombinant monoclonal antibodies and knockout edited cell lines for gold-standard validation. Please check that this product meets your needs before purchasing.</p> <p>If you have any questions, special requirements or concerns, please send us an inquiry and/or contact our Support team ahead of purchase. Recommended alternatives for this product can be found below, along with publications, customer reviews and Q&amp;As</p>

#### 製品の特性

製品の状態	Liquid
保存方法	Shipped at 4°C. Store at +4°C short term (1-2 weeks). Store at -20°C or -80°C. Avoid freeze / thaw cycle.
バッファー	Preservative: 0.09% Sodium azide Constituents: 1% BSA, PBS
精製度	Protein G purified
一次抗体 備考	ab88279 is derived from the hybridoma produced by fusion between myeloma cells and Balb/c spleen cells.

ポリ/モノ	モノクローナル
クローン名	DG10
アイソタイプ	IgG1

## アプリケーション

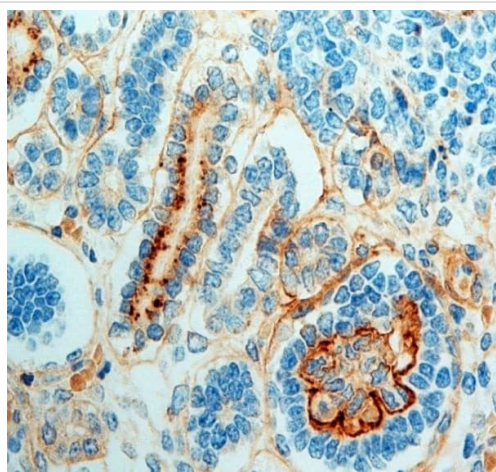
**The Abpromise guarantee** **Abpromise保証は、次のテスト済みアプリケーションにおけるab88279の使用に適用されます**  
 アプリケーションノートには、推奨の開始希釈率がありますが、適切な希釈率につきましてはご検討ください。

アプリケーション	Abreviews	特記事項
IHC-P		1/50. Perform heat mediated antigen retrieval with Tris/EDTA buffer pH 9.0 before commencing with IHC staining protocol.

## ターゲット情報

機能	Binding to cells via a high affinity receptor, laminin is thought to mediate the attachment, migration and organization of cells into tissues during embryonic development by interacting with other extracellular matrix components.
配列類似性	Contains 13 laminin EGF-like domains. Contains 1 laminin IV type B domain. Contains 1 laminin N-terminal domain.
ドメイン	The alpha-helical domains I and II are thought to interact with other laminin chains to form a coiled coil structure. Domains VI and IV are globular.
細胞内局在	Secreted > extracellular space > extracellular matrix > basement membrane. Major component.

## 画像



Immunohistochemical analysis of formalin fixed, paraffin embedded fetal kidney tissue labelling Laminin beta with **ab98597** at 1/50 dilution.

Pretreated with EDTA.

Immunohistochemistry (Formalin/PFA-fixed paraffin-embedded sections) - Anti-Laminin beta 1 antibody [DG10] (ab88279)

**Please note:** All products are "FOR RESEARCH USE ONLY. NOT FOR USE IN DIAGNOSTIC PROCEDURES"

### **Our Abpromise to you: Quality guaranteed and expert technical support**

---

- Replacement or refund for products not performing as stated on the datasheet
- Valid for 12 months from date of delivery
- Response to your inquiry within 24 hours
- We provide support in Chinese, English, French, German, Japanese and Spanish
- Extensive multi-media technical resources to help you
- We investigate all quality concerns to ensure our products perform to the highest standards

If the product does not perform as described on this datasheet, we will offer a refund or replacement. For full details of the Abpromise, please visit <https://www.abcam.co.jp/abpromise> or contact our technical team.

### **Terms and conditions**

---

- Guarantee only valid for products bought direct from Abcam or one of our authorized distributors