


Anti-Laminin antibody ab11575

★★★★★ [72 Abreviews](#) [567 References](#) [画像数 4](#)

製品の概要

製品名	Anti-Laminin antibody
製品の詳細	Rabbit polyclonal to Laminin
由来種	Rabbit
特異性	In dot blot immunoassay this antibody does not react with Fibronectin, Vitronectin, Collagen IV, or Chondroitin sulfate types A, B, and C.
アプリケーション	適用あり: Dot blot, IHC-P
種交差性	交差種: Mouse, Human 交差が予測される動物種: Rat, Horse, Dog, Pig, Xenopus laevis, Mammals, Amphibian 
免疫原	Full length native protein (purified) corresponding to Laminin. The immunogen is laminin isolated from the basement membrane of Englebreth Holm-Swarm (EHS) mouse sarcoma.
特記事項	Storage in frost-free freezers is not recommended. If slight turbidity occurs upon prolonged storage, clarify by centrifugation before use. The Life Science industry has been in the grips of a reproducibility crisis for a number of years. Abcam is leading the way in addressing this with our range of recombinant monoclonal antibodies and knockout edited cell lines for gold-standard validation. Please check that this product meets your needs before purchasing. If you have any questions, special requirements or concerns, please send us an inquiry and/or contact our Support team ahead of purchase. Recommended alternatives for this product can be found below, along with publications, customer reviews and Q&As

製品の特性

製品の状態	Liquid
保存方法	Shipped at 4°C. Upon delivery aliquot and store at -20°C or -80°C. Avoid repeated freeze / thaw cycles.
バッファー	pH: 7.40 Preservative: 0.097% Sodium azide Constituents: 0.027% PBS, 1% BSA
精製度	Immunogen affinity purified
ポリ/モノ	ポリクローナル

アプリケーション

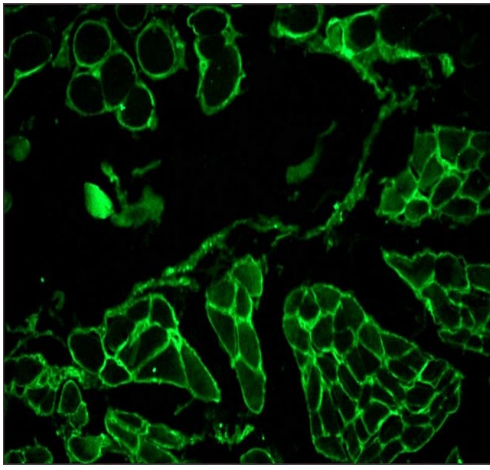
The Abpromise guarantee Abpromise保証は、次のテスト済みアプリケーションにおけるab11575の使用に適用されます
アプリケーションノートには、推奨の開始希釈率がありますが、適切な希釈率につきましてはご検討ください。

アプリケーション	Abreviews	特記事項
Dot blot		1/1000. This concentration was determined using laminin at 50 ng per dot.
IHC-P	★★★★★ (27)	Use at an assay dependent concentration.

ターゲット情報

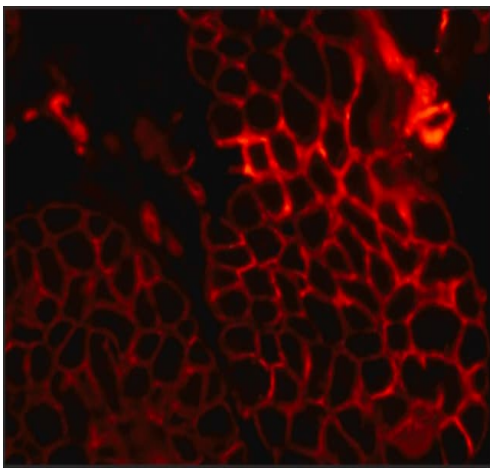
機能	Binding to cells via a high affinity receptor, laminin is thought to mediate the attachment, migration and organization of cells into tissues during embryonic development by interacting with other extracellular matrix components.
組織特異性	Broadly expressed in: skin, heart, lung, and the reproductive tracts.
配列類似性	Contains 11 laminin EGF-like domains. Contains 1 laminin IV type A domain. Contains 1 laminin N-terminal domain.
ドメイン	The alpha-helical domains I and II are thought to interact with other laminin chains to form a coiled coil structure. Domain IV is globular.
細胞内局在	Secreted > extracellular space > extracellular matrix > basement membrane.

画像



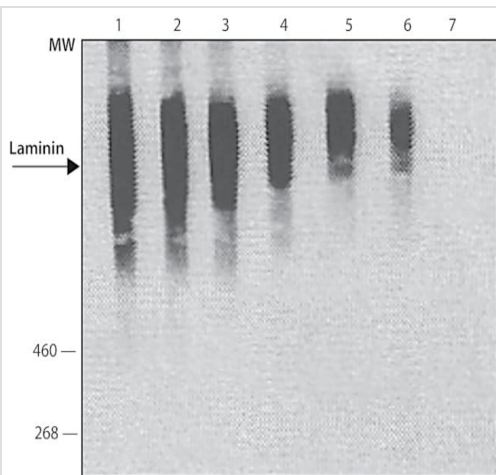
Immunohistochemistry (Formalin/PFA-fixed paraffin-embedded sections) - Anti-Laminin antibody (ab11575)

Immunohistochemical analysis of formalin fixed paraffin-embedded human tongue sections labeling Laminin with ab11575 at 1/30 dilution. Goat Anti-Rabbit IgG, FITC conjugate was used as secondary antibody.



Immunohistochemistry (Formalin/PFA-fixed paraffin-embedded sections) - Anti-Laminin antibody (ab11575)

Immunohistochemical analysis of formalin fixed paraffin-embedded human tonsil sections labeling Laminin with ab11575 at 1/50 dilution. Goat Anti-Rabbit IgG, Cy3™ conjugate was used as secondary antibody.



Dot Blot - Anti-Laminin antibody (ab11575)

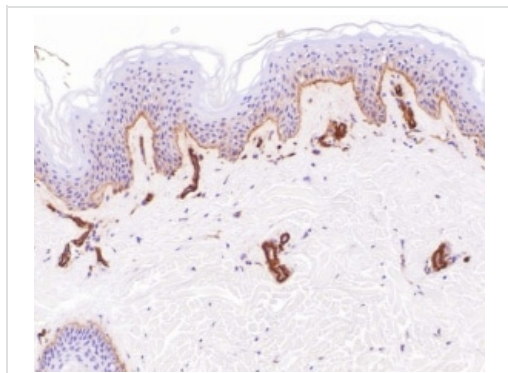
Immunoblotting

Laminin from Engelbreth-Holm-Swarm murine sarcoma basement membrane was separated on SDS-PAGE and probed with Rabbit Anti-Laminin ab11575. The antibody was developed using Goat Anti-Rabbit IgG-Peroxidase secondary antibody and a chemiluminescent substrate.

Lanes

1. antibody dilution 1/1,000
2. antibody dilution 1/2,000
3. antibody dilution 1/4,000
4. antibody dilution 1/8,000
5. antibody dilution 1/16,000
6. antibody dilution 1/32,000

7. Negative control: without primary antibody



Immunohistochemistry (Formalin/PFA-fixed paraffin-embedded sections) - Anti-Laminin antibody (ab11575)

This image shows formalin fixed paraffin embedded human skin stained for Laminin (proteinase K digestion, anti-laminin 1:200 – 30 minutes RT). The picture was kindly supplied as part of the review submitted by Elizabeth Chlipala.

Please note: All products are "FOR RESEARCH USE ONLY. NOT FOR USE IN DIAGNOSTIC PROCEDURES"

Our Abpromise to you: Quality guaranteed and expert technical support

- Replacement or refund for products not performing as stated on the datasheet
- Valid for 12 months from date of delivery
- Response to your inquiry within 24 hours
- We provide support in Chinese, English, French, German, Japanese and Spanish
- Extensive multi-media technical resources to help you
- We investigate all quality concerns to ensure our products perform to the highest standards

If the product does not perform as described on this datasheet, we will offer a refund or replacement. For full details of the Abpromise, please visit <https://www.abcam.co.jp/abpromise> or contact our technical team.

Terms and conditions

- Guarantee only valid for products bought direct from Abcam or one of our authorized distributors