

Anti-Laminin alpha 5/LAMA5 antibody [4C7] ab17107

★★★★☆ [2 Abreviews](#) [2 References](#) [画像数 2](#)

製品の概要

製品名	Anti-Laminin alpha 5/LAMA5 antibody [4C7]
製品の詳細	Mouse monoclonal [4C7] to Laminin alpha 5/LAMA5
由来種	Mouse
アプリケーション	適用あり: IHC-P
種交差性	交差種: Human 非交差種: Mouse, Rat
免疫原	Full length native protein (purified) corresponding to Human Laminin alpha 5/LAMA5. Database link: O15230
ポジティブ・コントロール	Skin
特記事項	<p>This antibody reacts with the terminal globular domain of the A chain. The staining with this antibody is sensitive to fixation of paraffin tissues and use of proteolytic enzymatic treatment.</p> <p>The Life Science industry has been in the grips of a reproducibility crisis for a number of years. Abcam is leading the way in addressing this with our range of recombinant monoclonal antibodies and knockout edited cell lines for gold-standard validation. Please check that this product meets your needs before purchasing.</p> <p>If you have any questions, special requirements or concerns, please send us an inquiry and/or contact our Support team ahead of purchase. Recommended alternatives for this product can be found below, along with publications, customer reviews and Q&As</p>

製品の特性

製品の状態	Liquid
保存方法	Shipped at 4°C. Store at +4°C short term (1-2 weeks). Store at -20°C or -80°C. Avoid freeze / thaw cycle.
バッファー	pH: 7.3 Preservative: 0.05% Sodium azide Constituents: Tissue culture supernatant, 1% BSA
精製度	Protein G purified
一次抗体 備考	This antibody reacts with the terminal globular domain of the A chain. The staining with this antibody is sensitive to fixation of paraffin tissues and use of proteolytic enzymatic treatment.
ポリ/モノ	モノクローナル

クローン名	4C7
アイソタイプ	IgG2a
軽鎖の種類	kappa

アプリケーション

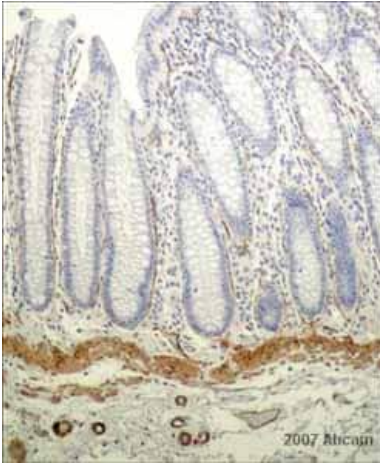
The Abpromise guarantee **Abpromise保証は、次のテスト済みアプリケーションにおけるab17107の使用に適用されず**
 アプリケーションノートには、推奨の開始希釈率がありますが、適切な希釈率につきましてはご検討ください。

アプリケーション	Abreviews	特記事項
IHC-P	★★★★★ (2)	1/5 - 1/20. Perform enzymatic antigen retrieval before commencing with IHC staining protocol.

ターゲット情報

機能	Binding to cells via a high affinity receptor, laminin is thought to mediate the attachment, migration and organization of cells into tissues during embryonic development by interacting with other extracellular matrix components.
組織特異性	Expressed in heart, lung, kidney, skeletal muscle, pancreas, retina and placenta. Little or no expression in brain and liver.
配列類似性	Contains 22 laminin EGF-like domains. Contains 5 laminin G-like domains. Contains 1 laminin IV type A domain. Contains 1 laminin N-terminal domain.
ドメイン	Domain G is globular and is part of the major cell-binding site located in the long arm of the laminin heterotrimer.
細胞内局在	Secreted, extracellular space, extracellular matrix, basement membrane. Major component.

画像

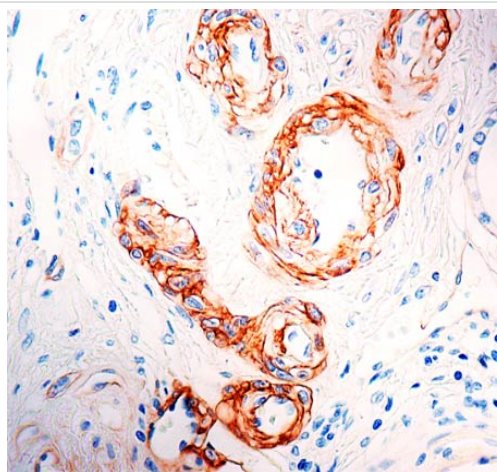


Immunohistochemistry (Formalin/PFA-fixed paraffin-embedded sections) - Anti-Laminin alpha 5/LAMA5 antibody [4C7] (ab17107)

This image is courtesy of an anonymous Abreview

ab17107 at 1/25 staining human colon tissue sections by IHC-P. The tissue was formaldehyde fixed and a heat mediated antigen retrieval step was performed prior to incubation with the antibody for 16 hours. An HRP conjugated goat anti-mouse antibody was used as the secondary.

This image was generated using the ascites version of the product.



Immunohistochemistry (Formalin/PFA-fixed paraffin-embedded sections) - Anti-Laminin alpha 5/LAMA5 antibody [4C7] (ab17107)

Immunohistochemical analysis of formalin-fixed, paraffin-embedded Human renal carcinoma tissue, staining Laminin alpha 5/LAMA5 with ab17107.

This image was generated using the ascites version of the product.

Please note: All products are "FOR RESEARCH USE ONLY. NOT FOR USE IN DIAGNOSTIC PROCEDURES"

Our Abpromise to you: Quality guaranteed and expert technical support

- Replacement or refund for products not performing as stated on the datasheet
- Valid for 12 months from date of delivery
- Response to your inquiry within 24 hours

- We provide support in Chinese, English, French, German, Japanese and Spanish
- Extensive multi-media technical resources to help you
- We investigate all quality concerns to ensure our products perform to the highest standards

If the product does not perform as described on this datasheet, we will offer a refund or replacement. For full details of the Abpromise,

please visit <https://www.abcam.co.jp/abpromise> or contact our technical team.

Terms and conditions

- Guarantee only valid for products bought direct from Abcam or one of our authorized distributors