

Anti-Laminin alpha 5/LAMA5 antibody [4B12] ab77175

★★★★☆ **1 Abreviews** **9 References** 画像数 **1**

製品の概要

製品名	Anti-Laminin alpha 5/LAMA5 antibody [4B12]
製品の詳細	Mouse monoclonal [4B12] to Laminin alpha 5/LAMA5
由来種	Mouse
アプリケーション	適用あり: ICC/IF 適用なし: WB
種交差性	交差種: Human
免疫原	Full length native protein (purified) corresponding to Human Laminin alpha 5/LAMA5.
ポジティブ・コントロール	Human embryonic lung (alveolar epithelium). Human kidney.
特記事項	<p>The Life Science industry has been in the grips of a reproducibility crisis for a number of years. Abcam is leading the way in addressing this with our range of recombinant monoclonal antibodies and knockout edited cell lines for gold-standard validation. Please check that this product meets your needs before purchasing.</p> <p>If you have any questions, special requirements or concerns, please send us an inquiry and/or contact our Support team ahead of purchase. Recommended alternatives for this product can be found below, along with publications, customer reviews and Q&As</p>

製品の特性

製品の状態	Liquid
保存方法	Shipped at 4°C. Upon delivery aliquot and store at -20°C or -80°C. Avoid repeated freeze / thaw cycles.
バッファー	pH: 7.40 Preservative: 0.1% Sodium azide Constituent: PBS
精製度	Ion Exchange Chromatography
ポリ/モノ	モノクローナル
クローン名	4B12
アイソタイプ	IgG1

アプリケーション

The Abpromise guarantee

Abpromise保証は、次のテスト済みアプリケーションにおけるab77175の使用に適用されます

アプリケーションノートには、推奨の開始希釈率がありますが、適切な希釈率につきましてはご検討ください。

アプリケーション	Abreviews	特記事項
ICC/IF	★★★★★ (1)	Use at an assay dependent concentration.

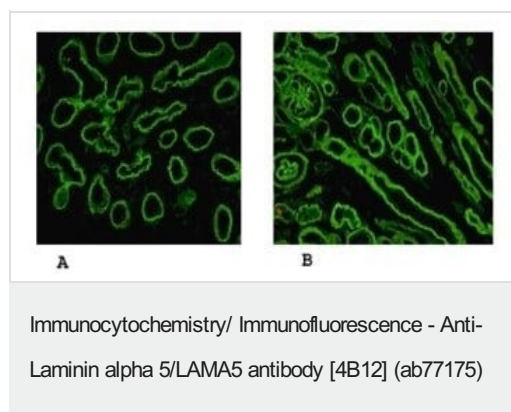
追加情報

Is unsuitable for WB.

ターゲット情報

機能	Binding to cells via a high affinity receptor, laminin is thought to mediate the attachment, migration and organization of cells into tissues during embryonic development by interacting with other extracellular matrix components.
組織特異性	Expressed in heart, lung, kidney, skeletal muscle, pancreas, retina and placenta. Little or no expression in brain and liver.
配列類似性	Contains 22 laminin EGF-like domains. Contains 5 laminin G-like domains. Contains 1 laminin IV type A domain. Contains 1 laminin N-terminal domain.
ドメイン	Domain G is globular and is part of the major cell-binding site located in the long arm of the laminin heterotrimer.
細胞内局在	Secreted, extracellular space, extracellular matrix, basement membrane. Major component.

画像



Immunofluorescence of (A) Human embryonic lung alveolae epithelium and (B) Human kidney labelling Lamin alpha 5 with ab77175.

Please note: All products are "FOR RESEARCH USE ONLY. NOT FOR USE IN DIAGNOSTIC PROCEDURES"

Our Abpromise to you: Quality guaranteed and expert technical support

- Replacement or refund for products not performing as stated on the datasheet
- Valid for 12 months from date of delivery
- Response to your inquiry within 24 hours

- We provide support in Chinese, English, French, German, Japanese and Spanish
- Extensive multi-media technical resources to help you
- We investigate all quality concerns to ensure our products perform to the highest standards

If the product does not perform as described on this datasheet, we will offer a refund or replacement. For full details of the Abpromise, please visit <https://www.abcam.co.jp/abpromise> or contact our technical team.

Terms and conditions

- Guarantee only valid for products bought direct from Abcam or one of our authorized distributors