

Anti-Laminin 5 antibody ab14509

★★★★★ 15 Abbreviations 67 References 画像数 2

医薬用外毒物

製品の概要

製品名	Anti-Laminin 5 antibody
製品の詳細	Rabbit polyclonal to Laminin 5
由来種	Rabbit
アプリケーション	適用あり: WB, ELISA, IHC-Fr, ICC/IF, IP
種交差性	交差種: Mouse, Horse, Dog, Human
免疫原	<p>This product was produced with the following immunogens:</p> <p>Full length native protein (purified) corresponding to Human Laminin 5. Produced against native human Laminin 5, isolated from ceratynocytes primary culture material. Swiss Prot Q16787, Q13751 and Q13753. Database link: Q16787</p> <p>Full length native protein (purified) corresponding to Human Laminin 5. Produced against native human Laminin 5, isolated from ceratynocytes primary culture material. Swiss Prot Q16787, Q13751 and Q13753. Database link: Q13751</p> <p>Full length native protein (purified) corresponding to Human Laminin 5. Produced against native human Laminin 5, isolated from ceratynocytes primary culture material. Swiss Prot Q16787, Q13751 and Q13753. Database link: Q13753</p>
ポジティブ・コントロール	WB: Cell culture supernatant of keratinocytes. HaCaT cell supernatant. SCC-25 cell supernatant. Purified Laminin 5.
特記事項	<p>The Life Science industry has been in the grips of a reproducibility crisis for a number of years. Abcam is leading the way in addressing this with our range of recombinant monoclonal antibodies and knockout edited cell lines for gold-standard validation. Please check that this product meets your needs before purchasing.</p> <p>If you have any questions, special requirements or concerns, please send us an inquiry and/or contact our Support team ahead of purchase. Recommended alternatives for this product can be found below, along with publications, customer reviews and Q&As</p>

製品の特性

製品の状態	Liquid
保存方法	Shipped at 4°C. Upon delivery aliquot and store at -20°C or -80°C. Avoid repeated freeze / thaw cycles.
バッファー	Preservative: 0.2% Sodium azide Constituent: PBS
精製度	Protein G purified
ポリ/モノ	ポリクローナル
アイソタイプ	IgG

アプリケーション

The Abpromise guarantee **Abpromise保証は、**次のテスト済みアプリケーションにおけるab14509の使用に適用されます
アプリケーションノートには、推奨の開始希釈率がありますが、適切な希釈率につきましてはご検討ください。

アプリケーション	Abreviews	特記事項
WB	★★★★☆ (4)	Use at an assay dependent concentration. Detects a band of approximately 165, 140, 105 kDa.
ELISA	★★★★☆ (1)	Use at an assay dependent concentration.
IHC-Fr	★★★★★ (4)	Use at an assay dependent concentration.
ICC/IF	★★★★☆ (1)	Use at an assay dependent concentration. PubMed: 16940506
IP		Use at an assay dependent concentration. PubMed: 16940506

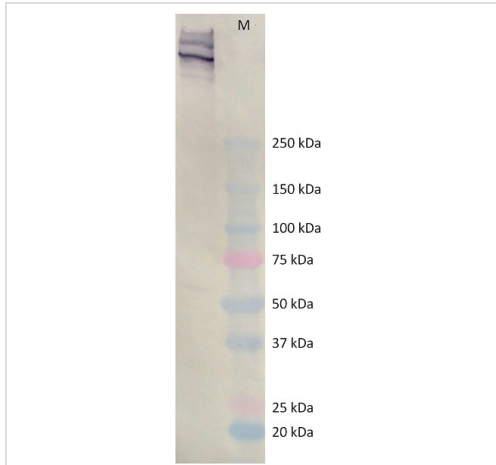
ターゲット情報

関連性

Laminins, a family of extracellular matrix glycoproteins, are the major noncollagenous constituent of basement membranes. They have been implicated in a wide variety of biological processes including cell adhesion, differentiation, migration, signaling, neurite outgrowth and metastasis. Laminins, composed of 3 non identical chains: laminin alpha, beta and gamma (formerly A, B1, and B2, respectively), have a cruciform structure consisting of 3 short arms, each formed by a different chain, and a long arm composed of all 3 chains. Each laminin chain is a multidomain protein encoded by a distinct gene. Several isoforms of each chain have been described. Different alpha, beta and gamma chain isomers combine to give rise to different heterotrimeric laminin isoforms which are designated by Arabic numerals in the order of their discovery, i.e. alpha1beta1gamma1 heterotrimer is laminin 1. The biological functions of the different chains and trimer molecules are largely unknown, but some of the chains have been shown to differ with respect to their tissue distribution, presumably reflecting diverse functions in vivo. This gene encodes the gamma chain isoform laminin, gamma 2. The gamma 2 chain, formerly thought to be a truncated version of beta chain (B2t), is highly homologous to the gamma 1 chain; however, it lacks domain VI, and domains V, IV and III are shorter. It is expressed in several fetal tissues but differently from gamma 1, and is specifically localized to epithelial cells in skin, lung and kidney. The gamma 2 chain together with alpha 3 and beta 3 chains constitute laminin 5 (earlier known as kalinin), which is an integral part of the anchoring filaments that connect epithelial cells to the underlying basement membrane. The epithelium-specific expression of the gamma 2 chain implied its role as an epithelium attachment molecule, and mutations in this gene have been

associated with junctional epidermolysis bullosa, a skin disease characterized by blisters due to disruption of the epidermal-dermal junction. Two transcript variants resulting from alternative splicing of the 3' terminal exon, and encoding different isoforms of gamma 2 chain, have been described. The two variants are differentially expressed in embryonic tissues, however, the biological significance of the two forms is not known. Transcript variants utilizing alternative polyA_signal have also been noted in literature.

画像

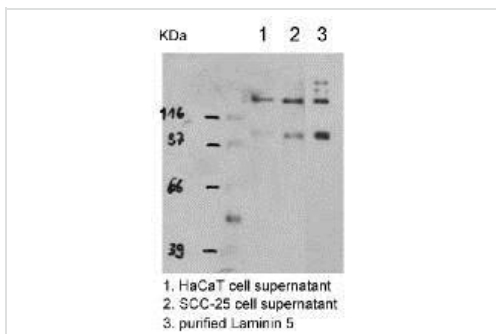


Western blot - Anti-Laminin 5 antibody (ab14509)

Anti-Laminin 5 antibody (ab14509) at 5 µg/ml + Cell culture supernatant of keratinocytes at 12 µl

Secondary

Peroxidase Conjugated Goat Anti-Rabbit Antibody



Western blot - Anti-Laminin 5 antibody (ab14509)

All lanes : Anti-Laminin 5 antibody (ab14509)

Lane 1 : HaCaT cell supernatant

Lane 2 : SCC-25 cell supernatant

Lane 3 : Purified Laminin 5

Please note: All products are "FOR RESEARCH USE ONLY. NOT FOR USE IN DIAGNOSTIC PROCEDURES"

Our Abpromise to you: Quality guaranteed and expert technical support

- Replacement or refund for products not performing as stated on the datasheet
- Valid for 12 months from date of delivery
- Response to your inquiry within 24 hours
- We provide support in Chinese, English, French, German, Japanese and Spanish
- Extensive multi-media technical resources to help you
- We investigate all quality concerns to ensure our products perform to the highest standards

If the product does not perform as described on this datasheet, we will offer a refund or replacement. For full details of the Abpromise, please visit <https://www.abcam.co.jp/abpromise> or contact our technical team.

Terms and conditions

- Guarantee only valid for products bought direct from Abcam or one of our authorized distributors