


Anti-Laminin 2 alpha antibody [4H8-2] ab11576

★★★★★ [7 Abreviews](#) [61 References](#) [画像数 3](#)

製品の概要

製品名	Anti-Laminin 2 alpha antibody [4H8-2]
製品の詳細	Rat monoclonal [4H8-2] to Laminin 2 alpha
由来種	Rat
アプリケーション	適用あり: IHC-Fr
種交差性	交差種: Mouse 交差が予測される動物種: Human 
免疫原	Full length protein corresponding to Mouse Laminin 2 alpha. Heart Laminin 2 (Mouse).
エピトープ	The epitope recognized by the antibody resides in the N-terminal portion of the alpha 2 chain of laminin.
ポジティブ・コントロール	IHC-Fr: Mouse tongue tissue.
特記事項	<p>Storage in frost-free freezers is not recommended. If slight turbidity occurs upon prolonged storage, clarify the solution by centrifugation before use. Working dilution samples should be discarded if not used within 12 hours.</p> <p>The Life Science industry has been in the grips of a reproducibility crisis for a number of years. Abcam is leading the way in addressing this with our range of recombinant monoclonal antibodies and knockout edited cell lines for gold-standard validation. Please check that this product meets your needs before purchasing.</p> <p>If you have any questions, special requirements or concerns, please send us an inquiry and/or contact our Support team ahead of purchase. Recommended alternatives for this product can be found below, along with publications, customer reviews and Q&As</p>

製品の特性

製品の状態	Liquid
保存方法	Shipped at 4°C. Upon delivery aliquot and store at -20°C or -80°C. Avoid repeated freeze / thaw cycles.
バッファー	pH: 7.40 Preservative: 0.097% Sodium azide Constituent: 0.0268% PBS
精製度	Protein A purified
ポリ/モノ	モノクローナル

クローン名 4H8-2
アイソタイプ IgG1

アプリケーション

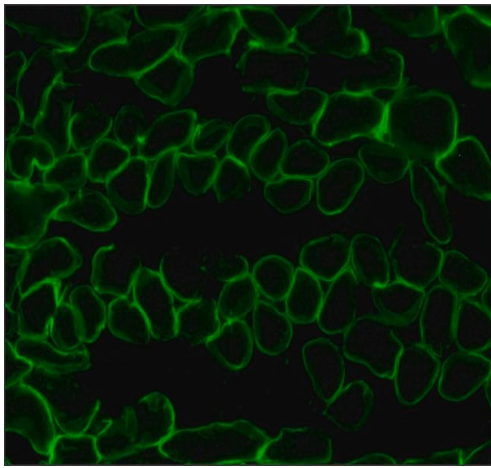
The Abpromise guarantee **Abpromise保証は、次のテスト済みアプリケーションにおけるab11576の使用に適用されず**
アプリケーションノートには、推奨の開始希釈率がありますが、適切な希釈率につきましてはご検討ください。

アプリケーション	Abreviews	特記事項
IHC-Fr	★★★★★ (5)	Use a concentration of 4 - 8 µg/ml. This concentration was determined for acetone-fixed frozen sections of human tongue.

ターゲット情報

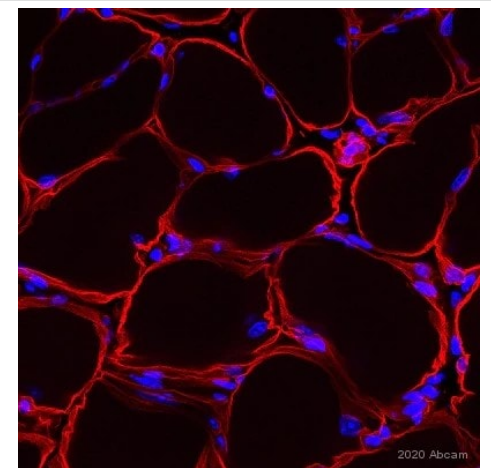
機能	Binding to cells via a high affinity receptor, laminin is thought to mediate the attachment, migration and organization of cells into tissues during embryonic development by interacting with other extracellular matrix components.
組織特異性	Placenta, striated muscle, peripheral nerve, cardiac muscle, pancreas, lung, spleen, kidney, adrenal gland, skin, testis, meninges, choroid plexus, and some other regions of the brain; not in liver, thymus and bone.
関連疾患	Defects in LAMA2 are the cause of merosin-deficient congenital muscular dystrophy type 1A (MDC1A) [MIM:607855]. MDC1A is characterized by difficulty walking, hypotonia, proximal weakness, hyporeflexia, and white matter hypodensity on MRI.
配列類似性	Contains 17 laminin EGF-like domains. Contains 5 laminin G-like domains. Contains 2 laminin IV type A domains. Contains 1 laminin N-terminal domain.
ドメイン	The alpha-helical domains I and II are thought to interact with other laminin chains to form a coiled coil structure. Domains VI, IV and G are globular.
細胞内局在	Secreted > extracellular space > extracellular matrix > basement membrane. Major component.

画像



Immunohistochemistry (Frozen sections) - Anti-Laminin 2 alpha antibody [4H8-2] (ab11576)

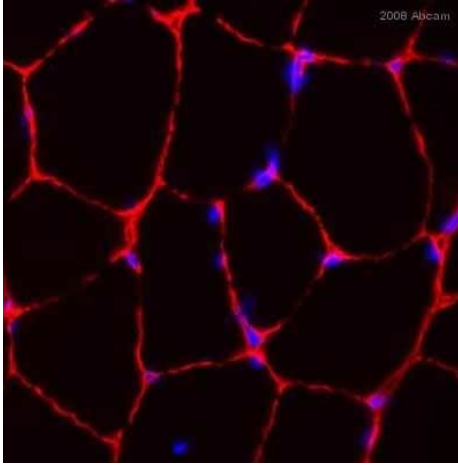
Immunohistochemical analysis of acetone-fixed frozen section of mouse tongue tissue labeling Laminin 2 alpha using ab11576 at 8 $\mu\text{g}/\text{mL}$, followed by a monoclonal Anti-Rat Kappa & Lamda light chains-FITC conjugate at 1/40 dilution (Green).



Immunohistochemistry (Frozen sections) - Anti-Laminin 2 alpha antibody [4H8-2] (ab11576)

This image is courtesy of an anonymous Abreview.

Immunohistochemistry (Frozen sections) analysis of Mouse muscle tissue labeling Laminin 2 alpha with ab11576 at 1/200 dilution. Tissue fixed with paraformaldehyde and permeabilized with 0.3% Triton X-100 in PBS for 30 minutes. Tissue blocked with 10% goat serum for 1 hour at room temperature followed by incubation with the primary antibody in 2% goat serum, 0.2% triton X-100 in PBS overnight at 4°C. Goat anti-rat IgG (Alexa Fluor[®] 568) was used as the secondary antibody at 1/500 dilution (red).



ab11576 staining C57B6 mouse skeletal muscle cryostat tissue sections by IHC-Fr. The section was acetone fixed and blocked with 5% BSA for 30 minutes at RT, prior to incubation with the primary antibody (diluted 1/200 in blocking buffer) for 2 hours. A rhodamine-conjugated goat anti-rat antibody was used as the secondary.

Immunohistochemistry (Frozen sections) - Anti-Laminin 2 alpha antibody [4H8-2] (ab11576)

This image is courtesy of an Abreview submitted by Dr Ling Guo

Please note: All products are "FOR RESEARCH USE ONLY. NOT FOR USE IN DIAGNOSTIC PROCEDURES"

Our Abpromise to you: Quality guaranteed and expert technical support

- Replacement or refund for products not performing as stated on the datasheet
- Valid for 12 months from date of delivery
- Response to your inquiry within 24 hours
- We provide support in Chinese, English, French, German, Japanese and Spanish
- Extensive multi-media technical resources to help you
- We investigate all quality concerns to ensure our products perform to the highest standards

If the product does not perform as described on this datasheet, we will offer a refund or replacement. For full details of the Abpromise, please visit <https://www.abcam.co.jp/abpromise> or contact our technical team.

Terms and conditions

- Guarantee only valid for products bought direct from Abcam or one of our authorized distributors