

### Anti-Laminin 1+2 antibody ab7463

★★★★★ **6 Abreviews**   **53 References**   画像数 5

#### 製品の概要

製品名	Anti-Laminin 1+2 antibody
製品の詳細	Rabbit polyclonal to Laminin 1+2
由来種	Rabbit
特異性	This antibody is pan-specific and reacts well with all laminin isoforms tested: laminin-1 (alpha-1, beta-1, and gamma-1) and laminin-2 (alpha-2, beta-1, and gamma-1).
アプリケーション	<b>適用あり:</b> IHC-P, WB, ICC/IF
種交差性	<b>交差種:</b> Mouse, Rat, Human
免疫原	Full length native protein (purified) (Mouse EHS tumour).
特記事項	<p>Laminin antibodies are widely used to label blood vessels and basement membranes.</p> <p>The Life Science industry has been in the grips of a reproducibility crisis for a number of years. Abcam is leading the way in addressing this with our range of recombinant monoclonal antibodies and knockout edited cell lines for gold-standard validation. Please check that this product meets your needs before purchasing.</p> <p>If you have any questions, special requirements or concerns, please send us an inquiry and/or contact our Support team ahead of purchase. Recommended alternatives for this product can be found below, along with publications, customer reviews and Q&amp;As</p>

#### 製品の特性

製品の状態	Liquid
保存方法	Shipped at 4°C. Store at +4°C short term (1-2 weeks). Upon delivery aliquot. Store at -20°C or -80°C. Avoid freeze / thaw cycle.
バッファー	Preservative: 0.05% Sodium azide
精製度	Immunogen affinity purified
一次抗体 備考	Laminin antibodies are widely used to label blood vessels and basement membranes.
ポリ/モノ	ポリクローナル
アイソタイプ	IgG

## アプリケーション

### The Abpromise guarantee

**Abpromise保証は、**次のテスト済みアプリケーションにおけるab7463の使用に適用されます

アプリケーションノートには、推奨の開始希釈率がありますが、適切な希釈率につきましてはご確認ください。

アプリケーション	Abreviews	特記事項
IHC-P	★★★★☆ (1)	1/500 - 1/2000. Perform enzymatic antigen retrieval before commencing with IHC staining protocol. Immunostaining enhanced by antigen retrieval with pepsin - apply 100ul of 4mg/ml pepsin dissolved in 0.01M HCl for 1 hour at 37C, especially paraffin tissue.
WB	★★★★☆ (1)	1/100 - 1/5000. Use 5-7% of gel for electrophoresis.
ICC/IF	★★★★☆ (1)	1/50 - 1/200.

## ターゲット情報

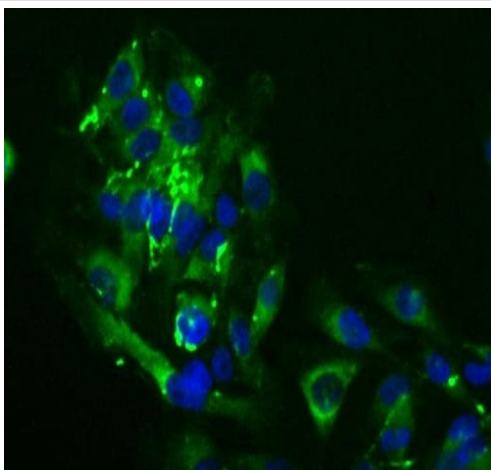
### 関連性

Laminin is a complex glycoprotein, consisting of three different polypeptide chains (alpha, beta, gamma), which are bound to each other by disulfide bonds into a cross-shaped molecule comprising one long and three short arms with globules at each end. Binding to cells via a high affinity receptor, laminin is thought to mediate the attachment, migration and organization of cells into tissues during embryonic development by interacting with other extracellular matrix components.

### 細胞内局在

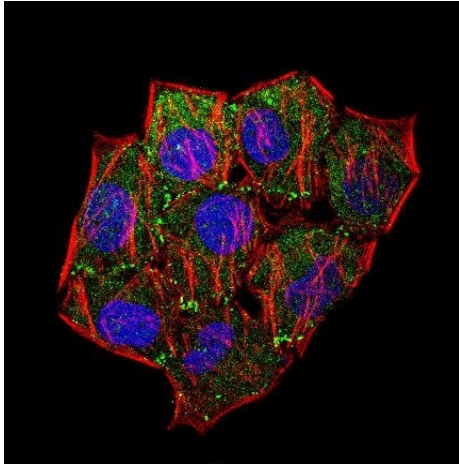
Secreted, Basement membrane, Extracellular matrix

## 画像



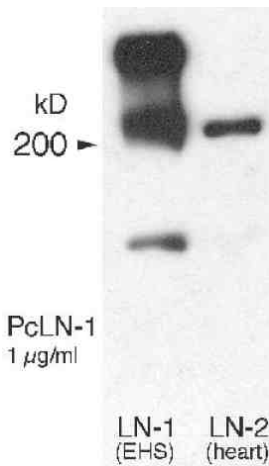
Ab7463 staining Laminin 1+2 in HeLa cells by ICC/IF (Immunocytochemistry/Immunofluorescence). Samples were incubated with primary antibody at 1:50 dilution. Hoechst 33258 (blue) was used as a nuclear counterstain.

Immunocytochemistry/ Immunofluorescence - Anti-Laminin 1+2 antibody (ab7463)



Immunocytochemistry/ Immunofluorescence - Anti-Laminin 1+2 antibody (ab7463)

Ab7463 staining Lamin 1+2 in HeLa cells by ICC/IF (Immunocytochemistry/Immunofluorescence). Samples were incubated with primary antibody at 1:5 dilution. An Alexa Fluor<sup>®</sup> 488- conjugated Goat to rabbit IgG was used as a secondary antibody. DAPI was used as a nuclear stain and an Alexa Fluor<sup>®</sup> 568 phalloidin (red) was used to stain actin filaments.



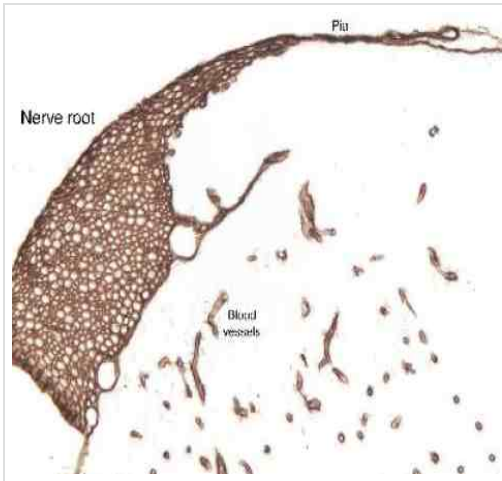
Western blot - Anti-Laminin 1+2 antibody (ab7463)

**All lanes :** Anti-Laminin 1+2 antibody (ab7463) at 1 µg/ml

**Lane 1 :** Mouse EHS tumor crude extracts

**Lane 2 :** Rat Heart Crude Extracts

**Observed band size:** 200,400 kDa



Immunohistochemistry (Formalin/PFA-fixed paraffin-embedded sections) - Anti-Laminin 1+2 antibody (ab7463)

Ab7463 staining Laminin in rat spinal cord and dorsal root by immunohistochemistry using paraformaldehyde/paraffin embedded tissue. Pepsin antigen retrieval was performed on this tissue sample.



Immunocytochemistry/ Immunofluorescence - Anti-Laminin 1+2 antibody (ab7463)

ab7463 staining Laminin 1+2 in human MDA-MB-231 by ICC/IF (Immunocytochemistry/ Immunofluorescence). The cells were paraformaldehyde fixed, permeabilized in 0.1% Triton X-100 buffer and blocked in 5% serum for 30 minutes at 25°C. The primary antibody was diluted 1/250 and incubated with sample for 1 hour at 37°C. A Alexa Fluor® 488 conjugated goat polyclonal to rabbit IgG was used undiluted, as secondary.

**Please note:** All products are "FOR RESEARCH USE ONLY. NOT FOR USE IN DIAGNOSTIC PROCEDURES"

### Our Abpromise to you: Quality guaranteed and expert technical support

- Replacement or refund for products not performing as stated on the datasheet
- Valid for 12 months from date of delivery
- Response to your inquiry within 24 hours
- We provide support in Chinese, English, French, German, Japanese and Spanish
- Extensive multi-media technical resources to help you
- We investigate all quality concerns to ensure our products perform to the highest standards

If the product does not perform as described on this datasheet, we will offer a refund or replacement. For full details of the Abpromise, please visit <https://www.abcam.co.jp/abpromise> or contact our technical team.

### Terms and conditions

- Guarantee only valid for products bought direct from Abcam or one of our authorized distributors