


Anti-Lamin B Receptor/LBR antibody [E398L] ab32535

KO 評価済 リコンビナント RabMAb

★★★★☆ 3 Abreviews 44 References 画像数 6

製品の概要

| | |
|--------------|--|
| 製品名 | Anti-Lamin B Receptor/LBR antibody [E398L] |
| 製品の詳細 | Rabbit monoclonal [E398L] to Lamin B Receptor/LBR |
| 由来種 | Rabbit |
| アプリケーション | 適用あり: Flow Cyt (Intra), WB, ICC/IF, IHC-P |
| 種交差性 | 交差種: Human 交差が予測される動物種: Rat  |
| 免疫原 | Synthetic peptide within Human Lamin B Receptor/LBR. The exact sequence is proprietary. |
| ポジティブ・コントロール | IF: HeLa cells. WB: HEK-293 and Jurkat whole cell lysate (ab7899). Flow Cyt (intra): HeLa cells. IHC-P: Human breast carcinoma tissue. |
| 特記事項 | <p>This product is a recombinant monoclonal antibody, which offers several advantages including:</p> <ul style="list-style-type: none"> - High batch-to-batch consistency and reproducibility - Improved sensitivity and specificity - Long-term security of supply - Animal-free production <p>For more information see here.</p> <p>Our RabMAb[®] technology is a patented hybridoma-based technology for making rabbit monoclonal antibodies. For details on our patents, please refer to RabMAb[®] patents.</p> <p>Mouse: We have preliminary internal testing data to indicate this antibody may not react with this species. Please contact us for more information.</p> |

製品の特性

| | |
|-------|--|
| 製品の状態 | Liquid |
| 保存方法 | Shipped at 4°C. Upon delivery aliquot and store at -20°C. Avoid freeze / thaw cycles. |
| バッファー | pH: 7.20 Preservative: 0.01% Sodium azide Constituents: 49% PBS, 50% Glycerol (glycerin, glycerine), 0.05% BSA |
| 精製度 | Protein A purified |
| ポリ/モノ | モノクローナル |

クローン名 E398L
アイソタイプ IgG

アプリケーション

The Abpromise guarantee **Abpromise保証は、次のテスト済みアプリケーションにおけるab32535の使用に適用されます**
アプリケーションノートには、推奨の開始希釈率がありますが、適切な希釈率につきましてはご確認ください。

| アプリケーション | Abreviews | 特記事項 |
|------------------|-----------|--|
| Flow Cyt (Intra) | | Use at an assay dependent concentration. ab172730 - Rabbit monoclonal IgG, is suitable for use as an isotype control with this antibody. |
| WB | ★★★★★ (1) | 1/500. Detects a band of approximately 67 kDa (predicted molecular weight: 71 kDa). |
| ICC/IF | ★★★★★ (1) | 1/500. |
| IHC-P | | Use a concentration of 5 µg/ml. Perform heat mediated antigen retrieval with citrate buffer pH 6 before commencing with IHC staining protocol. |

ターゲット情報

機能 Anchors the lamina and the heterochromatin to the inner nuclear membrane.

関連疾患 Defects in LBR are a cause of Pelger-Huet anomaly (PHA) [MIM:169400]. PHA is an autosomal dominant inherited abnormality of neutrophils, characterized by reduced nuclear segmentation and an apparently looser chromatin structure. Heterozygotes show hypolobulated neutrophil nuclei with coarse chromatin. Presumed homozygous individuals have ovoid neutrophil nuclei, as well as varying degrees of developmental delay, epilepsy, and skeletal abnormalities.

Defects in LBR are the cause of hydrops-ectopic calcification-moth-eaten skeletal dysplasia (HEM) [MIM:215140]; also known as Greenberg skeletal dysplasia. HEM is a rare autosomal recessive chondrodystrophy characterized by early in utero lethality and, therefore, considered to be nonviable. Affected fetuses typically present with fetal hydrops, short-limbed dwarfism, and a marked disorganization of chondro-osseous calcification and may present with polydactyly and additional nonskeletal malformations.

Defects in LBR may be a cause of Reynolds syndrome (REYNS) [MIM:613471]. It is a syndrome specifically associating limited cutaneous systemic sclerosis and primary biliary cirrhosis. It is characterized by liver disease, telangiectasia, abrupt onset of digital paleness or cyanosis in response to cold exposure or stress (Raynaud phenomenon), and variable features of scleroderma. The liver disease is characterized by pruritis, jaundice, hepatomegaly, increased serum alkaline phosphatase and positive serum mitochondrial autoantibodies, all consistent with primary biliary cirrhosis.

配列類似性 Belongs to the ERG4/ERG24 family.

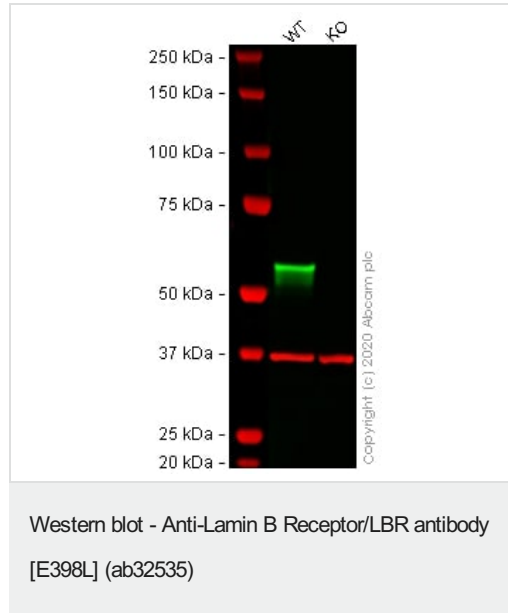
翻訳後修飾 Phosphorylated by CDK1 protein kinase in mitosis when the inner nuclear membrane breaks down into vesicles that dissociate from the lamina and the chromatin. It is phosphorylated by different protein kinases in interphase when the membrane is associated with these structures.

Phosphorylation of LBR and HP1 proteins may be responsible for some of the alterations in chromatin organization and nuclear structure which occur at various times during the cell cycle.

細胞内局在

Nucleus inner membrane.

画像



All lanes : Anti-Lamin B Receptor/LBR antibody [E398L] (ab32535) at 1/500 dilution

Lane 1 : Wild-type HEK-293 cell lysate

Lane 2 : Human LBR (Lamin B Receptor) knockout HEK-293T cell lysate ([ab257503](#))

Lysates/proteins at 20 µg per lane.

Performed under reducing conditions.

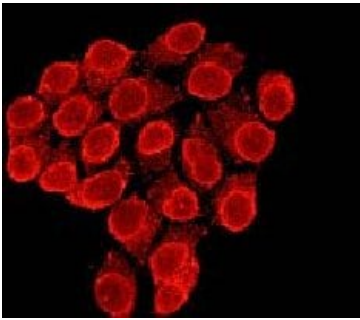
Predicted band size: 71 kDa

Observed band size: 58 kDa

Lanes 1 - 2: Merged signal (red and green). Green - ab32535 observed at 58 kDa. Red - loading control, [ab8245](#) (Mouse anti-GAPDH antibody [6C5]) observed at 37kDa.

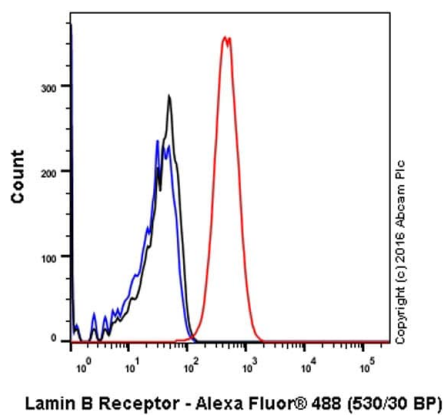
ab32535 was shown to react with Lamin B Receptor/LBR in wild-type HEK-293 cells in western blot. Loss of signal was observed when LBR knockout lysate [ab257503](#) was used. Wild-type and LBR knockout HEK-293 cell lysates were subjected to SDS-PAGE.

Membranes were blocked in 3% milk before incubation with ab32535 and [ab8245](#) (Mouse anti-GAPDH antibody [6C5]) overnight at 4°C at a 1 in 500 dilution and a 1 in 20000 dilution respectively. Blots were incubated with Goat anti-Mouse IgG H&L (IRDye® 800CW) preabsorbed ([ab216772](#)) and Goat anti-Rabbit IgG H&L (IRDye® 680RD) preabsorbed ([ab216777](#)) secondary antibodies at 1 in 20000 dilution for 1 hour at room temperature before imaging.



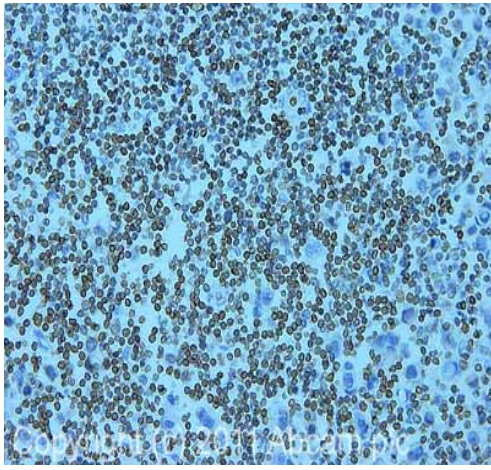
Immunocytochemistry/ Immunofluorescence - Anti-Lamin B Receptor/LBR antibody [E398L] (ab32535)

Ab32535, at a 1/500 dilution, staining Lamin B Receptor/LBR in HeLa cells by Immunofluorescence.



Flow Cytometry (Intracellular) - Anti-Lamin B Receptor/LBR antibody [E398L] (ab32535)

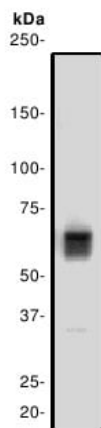
Intracellular Flow Cytometry analysis of HeLa (human cervix adenocarcinoma) cells labeling Lamin B Receptor/LBR with unpurified ab32535 at 1/20 dilution (10ug/ml) (red). Cells were fixed with 4% paraformaldehyde and permeabilised with 90% methanol. A Goat anti rabbit IgG (Alexa Fluor® 488) (1/2000 dilution) was used as the secondary antibody. Rabbit monoclonal IgG (Black) was used as the isotype control, cells without incubation with primary antibody and secondary antibody (Blue) were used as the unlabeled control.



Immunohistochemistry (Formalin/PFA-fixed paraffin-embedded sections) - Anti-Lamin B Receptor/LBR antibody [E398L] (ab32535)

IHC image of ab32535 staining in human breast cancer formalin fixed paraffin embedded tissue section, performed on a Leica Bond™ system using the standard protocol F. The section was pre-treated using heat mediated antigen retrieval with sodium citrate buffer (pH6, epitope retrieval solution 1) for 20 mins. The section was then incubated with ab32535, 5µg/ml, for 15 mins at room temperature and detected using an HRP conjugated compact polymer system. DAB was used as the chromogen. The section was then counterstained with haematoxylin and mounted with DPX.

For other IHC staining systems (automated and non-automated) customers should optimize variable parameters such as antigen retrieval conditions, primary antibody concentration and antibody incubation times.



Western blot - Anti-Lamin B Receptor/LBR antibody [E398L] (ab32535)

Anti-Lamin B Receptor/LBR antibody [E398L] (ab32535) at 1/500 dilution + Jurkat cell lysate

Predicted band size: 71 kDa

Observed band size: 67 kDa

Why choose a recombinant antibody?



Research with confidence
Consistent and reproducible results



Long-term and scalable supply
Recombinant technology



Success from the first experiment
Confirmed specificity



Ethical standards compliant
Animal-free production

Anti-Lamin B Receptor/LBR antibody [E398L]
(ab32535)

Please note: All products are "FOR RESEARCH USE ONLY. NOT FOR USE IN DIAGNOSTIC PROCEDURES"

Our Abpromise to you: Quality guaranteed and expert technical support

- Replacement or refund for products not performing as stated on the datasheet
- Valid for 12 months from date of delivery
- Response to your inquiry within 24 hours
- We provide support in Chinese, English, French, German, Japanese and Spanish
- Extensive multi-media technical resources to help you
- We investigate all quality concerns to ensure our products perform to the highest standards

If the product does not perform as described on this datasheet, we will offer a refund or replacement. For full details of the Abpromise, please visit <https://www.abcam.co.jp/abpromise> or contact our technical team.

Terms and conditions

- Guarantee only valid for products bought direct from Abcam or one of our authorized distributors