


### Anti-LAMC2 antibody ab96327

6 References [画像数 1](#)

医薬用外劇物

#### 製品の概要

製品名	Anti-LAMC2 antibody
製品の詳細	Rabbit polyclonal to LAMC2
由来種	Rabbit
アプリケーション	適用あり: WB
種交差性	交差種: Human 交差が予測される動物種: Mouse, Rat, Dog 
免疫原	Recombinant protein fragment contain a sequence corresponding to a region within amino acids 445 and 627 of Human LAMC2
ポジティブ・コントロール	Raji whole cell lysate
特記事項	<p>The Life Science industry has been in the grips of a reproducibility crisis for a number of years. Abcam is leading the way in addressing this with our range of recombinant monoclonal antibodies and knockout edited cell lines for gold-standard validation. Please check that this product meets your needs before purchasing.</p> <p>If you have any questions, special requirements or concerns, please send us an inquiry and/or contact our Support team ahead of purchase. Recommended alternatives for this product can be found below, along with publications, customer reviews and Q&amp;As</p>

#### 製品の特性

製品の状態	Liquid
保存方法	Shipped at 4°C. Upon delivery aliquot and store at -20°C or -80°C. Avoid repeated freeze / thaw cycles.
バッファー	pH: 7.00 Preservative: 0.01% Thimerosal (merthiolate) Constituents: 1.21% Tris, 0.75% Glycine, 20% Glycerol (glycerin, glycerine)
精製度	Immunogen affinity purified
ポリ/モノ	ポリクローナル
アイソタイプ	IgG

## アプリケーション

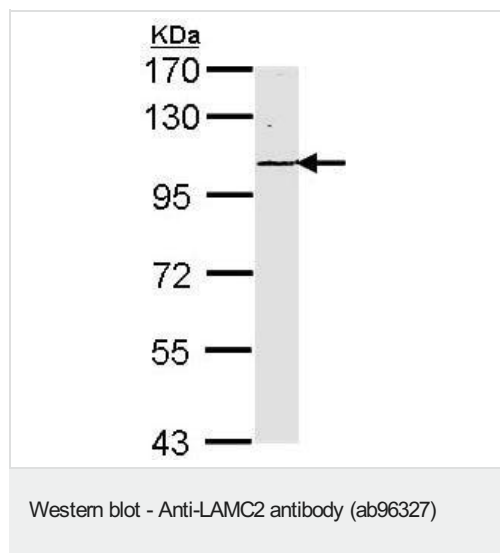
**The Abpromise guarantee**      **Abpromise保証は、**次のテスト済みアプリケーションにおけるab96327の使用に適用されます  
アプリケーションノートには、推奨の開始希釈率がありますが、適切な希釈率につきましてはご確認ください。

アプリケーション	Abreviews	特記事項
WB		1/500 - 1/3000. Predicted molecular weight: 131 kDa.

## ターゲット情報

機能	Binding to cells via a high affinity receptor, laminin is thought to mediate the attachment, migration and organization of cells into tissues during embryonic development by interacting with other extracellular matrix components. Ladsin exerts cell-scattering activity toward a wide variety of cells, including epithelial, endothelial, and fibroblastic cells.
組織特異性	The large variant is expressed only in specific epithelial cells of embryonic and neonatal tissues. In 17-week old embryo the small variant is found in cerebral cortex, lung, and distal tubes of kidney, but not in epithelia except for distal tubuli.
関連疾患	Defects in LAMC2 are a cause of epidermolysis bullosa junctional Herlitz type (H-JEB) [MM:226700]; also known as junctional epidermolysis bullosa Herlitz-Pearson type. JEB defines a group of blistering skin diseases characterized by tissue separation which occurs within the dermo-epidermal basement membrane. H-JEB is a severe, infantile and lethal form. Death occurs usually within the first six months of life. Occasionally, children survive to teens. H-JEB is marked by bullous lesions at birth and extensive denudation of skin and mucous membranes that may be hemorrhagic.
配列類似性	Contains 8 laminin EGF-like domains. Contains 1 laminin IV type A domain.
ドメイン	The alpha-helical domains I and II are thought to interact with other laminin chains to form a coiled coil structure. Domain IV is globular.
細胞内局在	Secreted > extracellular space > extracellular matrix > basement membrane. Major component.

## 画像



Anti-LAMC2 antibody (ab96327) at 1/1000 dilution + Raji cell lysate  
at 30 µg

**Predicted band size: 131 kDa**

**Please note:** All products are "FOR RESEARCH USE ONLY. NOT FOR USE IN DIAGNOSTIC PROCEDURES"

### Our Abpromise to you: Quality guaranteed and expert technical support

---

- Replacement or refund for products not performing as stated on the datasheet
- Valid for 12 months from date of delivery
- Response to your inquiry within 24 hours
- We provide support in Chinese, English, French, German, Japanese and Spanish
- Extensive multi-media technical resources to help you
- We investigate all quality concerns to ensure our products perform to the highest standards

If the product does not perform as described on this datasheet, we will offer a refund or replacement. For full details of the Abpromise, please visit <https://www.abcam.co.jp/abpromise> or contact our technical team.

### Terms and conditions

---

- Guarantee only valid for products bought direct from Abcam or one of our authorized distributors