

Anti-Lambda Light chain antibody [LcN-2] ab187370

2 References [画像数 3](#)

製品の概要

製品名	Anti-Lambda Light chain antibody [LcN-2]
製品の詳細	Mouse monoclonal [LcN-2] to Lambda Light chain
由来種	Mouse
特異性	ab187370 is specific to lambda light chain of immunoglobulin and shows no cross-reaction with kappa light chain or any of the five heavy chains.
アプリケーション	適用あり: IHC-P, ICC, WB
種交差性	交差種: Human
免疫原	Full length native protein (purified) corresponding to Human Lambda Light chain. (Purified Human IgG). Database link: <u>P01701</u>
ポジティブ・コントロール	WB: Human intestine lysate; IHC-P: Human tonsil tissue; ICC: Ramos cells.
特記事項	<p>The Life Science industry has been in the grips of a reproducibility crisis for a number of years. Abcam is leading the way in addressing this with our range of recombinant monoclonal antibodies and knockout edited cell lines for gold-standard validation. Please check that this product meets your needs before purchasing.</p> <p>If you have any questions, special requirements or concerns, please send us an inquiry and/or contact our Support team ahead of purchase. Recommended alternatives for this product can be found below, along with publications, customer reviews and Q&As</p>

製品の特性

製品の状態	Liquid
保存方法	Shipped at 4°C. Store at +4°C short term (1-2 weeks). Upon delivery aliquot. Store at -20°C long term. Avoid freeze / thaw cycle.
バッファー	pH: 7.2 Preservative: 0.05% Sodium azide Constituents: 99% PBS, 0.05% BSA
精製度	Protein A purified
特記事項(精製)	ab187370 was purified from Bioreactor Concentrate by Protein A/G.
ポリ/モノ	モノクローナル

クローン名	LcN-2
アイソタイプ	IgG2a
軽鎖の種類	kappa

アプリケーション

The Abpromise guarantee **Abpromise保証は、**次のテスト済みアプリケーションにおけるab187370の使用に適用されます
アプリケーションノートには、推奨の開始希釈率がありますが、適切な希釈率につきましてはご検討ください。

アプリケーション	Abreviews	特記事項
IHC-P		Use a concentration of 0.25 - 0.5 µg/ml. Staining of formalin-fixed tissues requires heating tissue sections in 10mM Tris with 1mM EDTA, pH 9.0, for 45 min at 95°C followed by cooling at room temperature for 20 minutes.
ICC		Use a concentration of 1 - 2 µg/ml.
WB		Use a concentration of 1 - 2 µg/ml. Predicted molecular weight: 23 kDa.

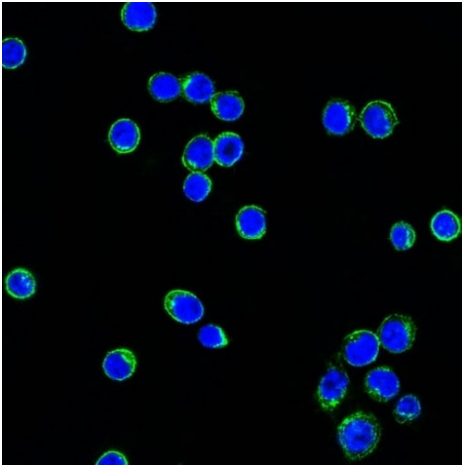
ターゲット情報

関連性

All five immunoglobulin classes share the same basic four polypeptide chain structure of two heavy-chains and two light chains. There are five heavy chain types, and two light-chain types (Kappa and Lambda) both having a molecular weight of 22.5kDa. Any heavy-chain type can associate with either light-chain type, but on any immunoglobulin molecule both light-chains are of the same type. Kappa and Lambda consist of a variable region and a constant region and can easily be differentiated by the antigenic properties of the constant region. The ratio of Kappa to Lambda is 70:30 , the vast majority of which is bound to heavy-chain in immunoglobulin. In normal individuals low levels of free light-chain are present in serum (kappa, 1.6-15.2 mg/L; Lambda, 0.4-4.2mg/L), with the occurrence of multiple myeloma or other B-cell malignancies these levels can be greatly elevated and can be found at high levels in the urine (Bence-Jones proteins).

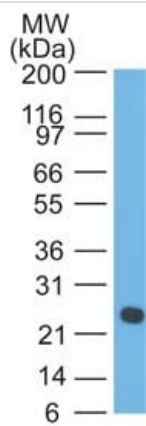
細胞内局在 Cytoplasmic

画像



Immunocytochemistry analysis of Ramos (human Burkitt's lymphoma cell line) cells using ab187370 (AF488-labeled) (Green). DAPI was used to stain the cell nuclei (blue). Imaged using confocal microscopy.

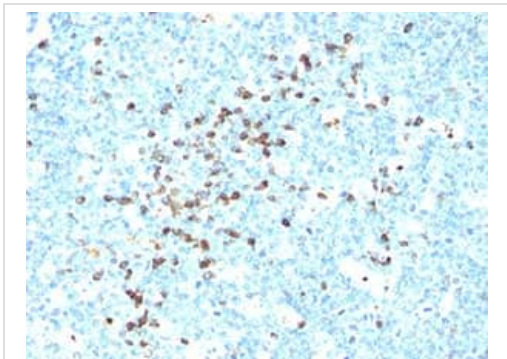
Immunocytochemistry - Anti-Lambda Light chain antibody [LcN-2] (ab187370)



Anti-Lambda Light chain antibody [LcN-2] (ab187370) at 1 µg/ml + Human intestine lysate

Predicted band size: 23 kDa

Western blot - Anti-Lambda Light chain antibody [LcN-2] (ab187370)



Immunohistochemical analysis of formalin-fixed, paraffin embedded Human tonsil tissue labeling Lambda Light chain with ab187370 at 1 µg/ml.

Immunohistochemistry (Formalin/PFA-fixed paraffin-embedded sections) - Anti-Lambda Light chain antibody [LcN-2] (ab187370)

Please note: All products are "FOR RESEARCH USE ONLY. NOT FOR USE IN DIAGNOSTIC PROCEDURES"

Our Abpromise to you: Quality guaranteed and expert technical support

- Replacement or refund for products not performing as stated on the datasheet
- Valid for 12 months from date of delivery
- Response to your inquiry within 24 hours
- We provide support in Chinese, English, French, German, Japanese and Spanish
- Extensive multi-media technical resources to help you
- We investigate all quality concerns to ensure our products perform to the highest standards

If the product does not perform as described on this datasheet, we will offer a refund or replacement. For full details of the Abpromise, please visit <https://www.abcam.co.jp/abpromise> or contact our technical team.

Terms and conditions

- Guarantee only valid for products bought direct from Abcam or one of our authorized distributors