

Anti-LAMB3 antibody ab97765

1 References **画像数 4**

製品の概要

製品名	Anti-LAMB3 antibody
製品の詳細	Rabbit polyclonal to LAMB3
由来種	Rabbit
アプリケーション	適用あり: WB, IHC-P, ICC/IF
種交差性	交差種: Mouse, Human
免疫原	Recombinant fragment corresponding to Human LAMB3 aa 644-930.
ポジティブ・コントロール	H1299, HeLa, or HepG2 and cell lines. NIH-3T3 and A431 whole cell lysate.
特記事項	<p>The Life Science industry has been in the grips of a reproducibility crisis for a number of years. Abcam is leading the way in addressing this with our range of recombinant monoclonal antibodies and knockout edited cell lines for gold-standard validation. Please check that this product meets your needs before purchasing.</p> <p>If you have any questions, special requirements or concerns, please send us an inquiry and/or contact our Support team ahead of purchase. Recommended alternatives for this product can be found below, along with publications, customer reviews and Q&As</p>

製品の特性

製品の状態	Liquid
保存方法	Shipped at 4°C. Upon delivery aliquot. Store at -20°C or -80°C. Avoid freeze / thaw cycle.
バッファー	<p>pH: 7.00</p> <p>Preservative: 0.025% Proclin 300</p> <p>Constituents: 78% PBS, 1% BSA, 20% Glycerol (glycerin, glycerine)</p>
精製度	Immunogen affinity purified
ポリ/モノ	ポリクローナル
アイソタイプ	IgG

アプリケーション

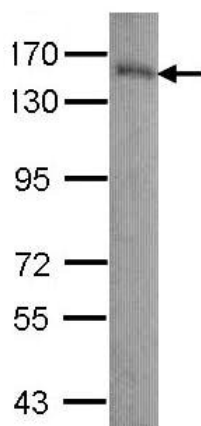
The Abpromise guarantee **Abpromise保証は、次のテスト済みアプリケーションにおけるab97765の使用に適用されます**
 アプリケーションノートには、推奨の開始希釈率がありますが、適切な希釈率につきましてはご検討ください。

アプリケーション	Abreviews	特記事項
WB		1/500 - 1/3000. Predicted molecular weight: 130 kDa.
IHC-P		1/100 - 1/1000. Perform heat mediated antigen retrieval before commencing with IHC staining protocol. Suggested antigen retrieval using heat mediated 10 mM Citrate buffer (pH 6.0) or Tris-EDTA buffer (pH 8.0).
ICC/IF		1/100 - 1/1000.

ターゲット情報

機能	Binding to cells via a high affinity receptor, laminin is thought to mediate the attachment, migration and organization of cells into tissues during embryonic development by interacting with other extracellular matrix components.
組織特異性	Found in the basement membranes (major component).
関連疾患	Defects in LAMB3 are a cause of epidermolysis bullosa junctional Herlitz type (H-JEB) [MIM:226700]; also known as junctional epidermolysis bullosa Herlitz-Pearson type. JEB defines a group of blistering skin diseases characterized by tissue separation which occurs within the dermo-epidermal basement membrane. H-JEB is a severe, infantile and lethal form. Death occurs usually within the first six months of life. Occasionally, children survive to teens. H-JEB is marked by bullous lesions at birth and extensive denudation of skin and mucous membranes that may be hemorrhagic. Defects in LAMB3 are a cause of generalized atrophic benign epidermolysis bullosa (GABEB) [MIM:226650]. GABEB is a non-lethal, adult form of junctional epidermolysis bullosa characterized by life-long blistering of the skin, associated with hair and tooth abnormalities.
配列類似性	Contains 6 laminin EGF-like domains. Contains 1 laminin N-terminal domain.
ドメイン	The alpha-helical domains I and II are thought to interact with other laminin chains to form a coiled coil structure. Domain VI is globular.
細胞内局在	Secreted > extracellular space > extracellular matrix > basement membrane.

画像

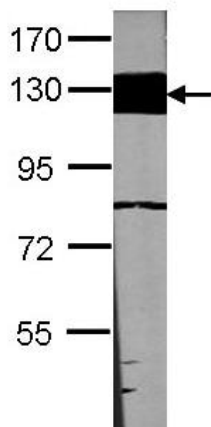


Western blot - Anti-LAMB3 antibody (ab97765)

Anti-LAMB3 antibody (ab97765) at 1/1000 dilution + A431 whole cell lysate at 30 µg

Predicted band size: 130 kDa

7.5% SDS PAGE

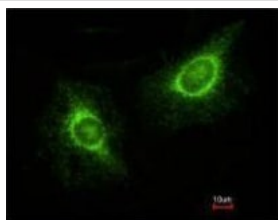


Western blot - Anti-LAMB3 antibody (ab97765)

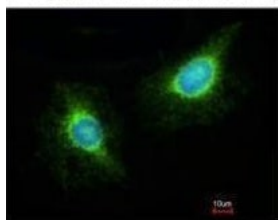
Anti-LAMB3 antibody (ab97765) at 1/1000 dilution + NIH-3T3 whole cell lysate at 30 µg

Predicted band size: 130 kDa

7.5% SDS PAGE

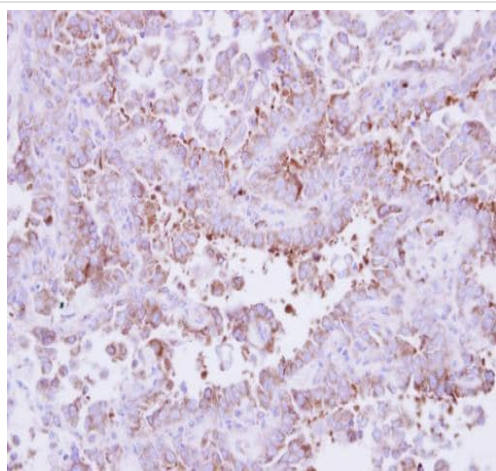


Costained with Hoechst 33342



Immunofluorescence analysis of methanol-fixed HeLa, using ab97765 at 1:200.

Immunocytochemistry/ Immunofluorescence - Anti-LAMB3 antibody (ab97765)



Immunohistochemical analysis of paraffin-embedded human lung cancer, using ab97765 to detect LAMB3 at 1:250.

Immunohistochemistry (Formalin/PFA-fixed paraffin-embedded sections) - Anti-LAMB3 antibody (ab97765)

Please note: All products are "FOR RESEARCH USE ONLY. NOT FOR USE IN DIAGNOSTIC PROCEDURES"

Our Abpromise to you: Quality guaranteed and expert technical support

- Replacement or refund for products not performing as stated on the datasheet

- Valid for 12 months from date of delivery
- Response to your inquiry within 24 hours
- We provide support in Chinese, English, French, German, Japanese and Spanish
- Extensive multi-media technical resources to help you
- We investigate all quality concerns to ensure our products perform to the highest standards

If the product does not perform as described on this datasheet, we will offer a refund or replacement. For full details of the Abpromise, please visit <https://www.abcam.co.jp/abpromise> or contact our technical team.

Terms and conditions

- Guarantee only valid for products bought direct from Abcam or one of our authorized distributors