

# Anti-Lactoferrin antibody ab15811

★★★★★ [3 Abreviews](#) [20 References](#) [画像数 1](#)

## 製品の概要

|          |  |
|----------|--|
| 製品名      | Anti-Lactoferrin antibody                      |
| 製品の詳細    | Rabbit polyclonal to Lactoferrin               |
| 由来種      | Rabbit   |
| アプリケーション | <b>適用あり:</b> IP, ICC, IHC-P, ELISA, WB         |
| 種交差性     | <b>交差種:</b> Human                              |
| 免疫原      | Full length native protein (purified) (Human). |

## 特記事項

Lactoferrin is an iron binding glycoprotein with an approximate molecular weight of 80 kDa. The protein has two iron binding domains each housing one  $\text{Fe}^{3+}$  and the synergistic  $\text{CO}_3^{2-}$  ion. The crystal structure form of human lactoferrin at 2.2Å resolution exhibits 5330 protein atoms,  $2\text{Fe}^{2+}$ ,  $2\text{CO}_3^{2-}$  and 98 carbohydrate atoms. Lactoferrin is absorbed from intestine by apical side of the membrane and localized to the nuclei. Intravenous infusion of lactoferrin is protective against lethal doses of E coli and induce bacterimia by a mechanism that downregulates neutrophil TNF alfa secretion. Recombinant human lactoferrin (rhLF), expressed and extracted from rice seed, is being evaluated for use as a dietary supplement to treat iron deficiency and/or iron deficiency induced anemia. Lactoferrin has been shown to have a role in the immune system and in early development of the embryo. A specific receptor for lactoferrin binding has been implicated in the human fetal intestine. Early embryonic localisation of lactoferrin by IHC has suggested its presence in various tissues including intestinal epitheliuem, kiney, and various regions of the brain.

The Life Science industry has been in the grips of a reproducibility crisis for a number of years. Abcam is leading the way in addressing this with our range of recombinant monoclonal antibodies and knockout edited cell lines for gold-standard validation. Please check that this product meets your needs before purchasing.

If you have any questions, special requirements or concerns, please send us an inquiry and/or contact our Support team ahead of purchase. Recommended alternatives for this product can be found below, along with publications, customer reviews and Q&As

## 製品の特性

|       |  |
|-------|--|
| 製品の状態 | Liquid   |
| 保存方法  | Shipped at 4°C. Store at +4°C short term (1-2 weeks). Upon delivery aliquot. Store at -20°C or - |

80°C. Avoid freeze / thaw cycle.

|           |  |
|-----------|--|
| 精製度       | Immunogen affinity purified  |
| 特記事項 (精製) | Affinity purified using immobilized antigenic proteins and pre adsorbed on an immobilized heterologous lactoferrin matrix to remove the cross reacting antibodies.   |
| 一次抗体 備考   | Lactoferrin is an iron binding glycoprotein with an approximate molecular weight of 80 kDa. The protein has two iron binding domains each housing one $\text{Fe}^{3+}$ and the synergistic $\text{CO}_3^{2-}$ ion. The crystal structure form of human lactoferrin at 2.2Å resolution exhibits 5330 protein atoms, $2\text{Fe}^{2+}$ , $2\text{CO}_3^{2-}$ and 98 carbohydrate atoms. Lactoferrin is absorbed from intestine by apical side of the membrane and localized to the nuclei. Intravenous infusion of lactoferrin is protective against lethal doses of E coli and induce bacterimia by a mechanism that downregulates neutrophil TNF alfa secretion. Recombinant human lactoferrin (rhLF), expressed and extracted from rice seed, is being evaluated for use as a dietary supplement to treat iron deficiency and/or iron deficiency induced anemia. Lactoferrin has been shown to have a role in the immune system and in early development of the embryo. A specific receptor for lactoferrin binding has been implicated in the human fetal intestine. Early embryonic localisation of lactoferrin by IHC has suggested its presence in various tissues including intestinal epitheliuem, kiney, and various regions of the brain. |
| ポリ/モノ     | ポリクローナル  |
| アイソタイプ    | IgG  |

## アプリケーション

The Abpromise guarantee      **Abpromise保証は、次のテスト済みアプリケーションにおけるab15811の使用に適用されます**  
アプリケーションノートには、推奨の開始希釈率がありますが、適切な希釈率につきましてはご検討ください。

| アプリケーション | Abreviews | 特記事項  |
|----------|-----------|---|
| IP       |           | Use at an assay dependent concentration.                  |
| ICC      |           | Use at an assay dependent concentration.                  |
| IHC-P    | ★★★★★ (1) | Use at an assay dependent concentration.                  |
| ELISA    | ★★★★☆ (1) | Use at an assay dependent concentration. PubMed: 17244155 |
| WB       | ★☆☆☆☆ (1) | 1/500. Predicted molecular weight: 79 kDa.                |

## ターゲット情報

|    |   |
|----|---|
| 機能 | <p>Transferrins are iron binding transport proteins which can bind two <math>\text{Fe}(3+)</math> ions in association with the binding of an anion, usually bicarbonate.</p> <p>Lactotransferrin has antimicrobial activity which depends on the extracellular cation concentration. Lactoferroxins A, B and C have opioid antagonist activity. Lactoferroxin A shows preference for mu-receptors, while lactoferroxin B and C have somewhat higher degrees of preference for kappa-receptors than for mu-receptors.</p> <p>The lactotransferrin transferrin-like domain 1 functions as a serine protease of the peptidase S60 family that cuts arginine rich regions. This function contributes to the antimicrobial activity.</p> |
|----|---|

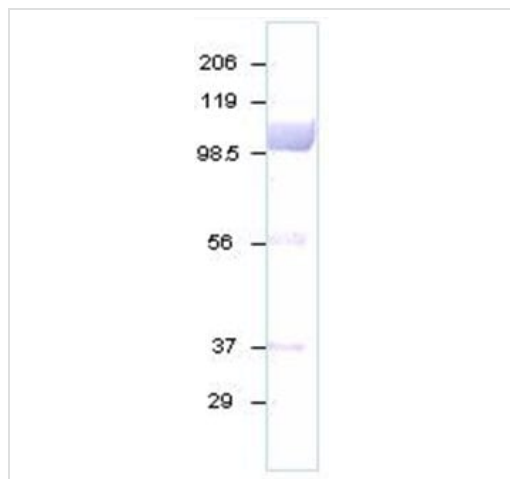
## 配列類似性

Belongs to the transferrin family.  
Contains 2 transferrin-like domains.

## 細胞内局在

Secreted.

## 画像



Anti-Lactoferrin antibody (ab15811) at 1/500 dilution + Human Lactoferrin

**Predicted band size:** 79 kDa

**Observed band size:** 99 kDa

Western blot - Anti-Lactoferrin antibody (ab15811)

**Please note:** All products are "FOR RESEARCH USE ONLY. NOT FOR USE IN DIAGNOSTIC PROCEDURES"

## Our Abpromise to you: Quality guaranteed and expert technical support

- Replacement or refund for products not performing as stated on the datasheet
- Valid for 12 months from date of delivery
- Response to your inquiry within 24 hours
- We provide support in Chinese, English, French, German, Japanese and Spanish
- Extensive multi-media technical resources to help you
- We investigate all quality concerns to ensure our products perform to the highest standards

If the product does not perform as described on this datasheet, we will offer a refund or replacement. For full details of the Abpromise, please visit <https://www.abcam.co.jp/abpromise> or contact our technical team.

## Terms and conditions

- Guarantee only valid for products bought direct from Abcam or one of our authorized distributors