


Anti-Lactate Dehydrogenase antibody [EPR1564] ab101562

リコンビナント RabMAb

★★★★☆ **3 Abreviews** **70 References** **画像数 3**

製品の概要

製品名	Anti-Lactate Dehydrogenase antibody [EPR1564]
製品の詳細	Rabbit monoclonal [EPR1564] to Lactate Dehydrogenase
由来種	Rabbit
特異性	The immunogen for this antibody has 93% homology with L-lactate dehydrogenase C chain (P07864).
アプリケーション	適用あり: WB, IHC-P 適用なし: Flow Cyt, ICC/IF or IP
種交差性	交差種: Human 交差が予測される動物種: Mouse, Rat 
免疫原	Synthetic peptide. This information is proprietary to Abcam and/or its suppliers.
ポジティブ・コントロール	HeLa, MCF-7, A375 and 293T cell lysates, Human Muscle tissue
特記事項	This product is a recombinant monoclonal antibody, which offers several advantages including: - High batch-to-batch consistency and reproducibility - Improved sensitivity and specificity - Long-term security of supply - Animal-free production For more information see here . Our RabMAb [®] technology is a patented hybridoma-based technology for making rabbit monoclonal antibodies. For details on our patents, please refer to RabMAb[®] patents .

製品の特性

製品の状態	Liquid
保存方法	Shipped at 4°C. Store at -20°C.
バッファー	pH: 7.20 Preservative: 0.01% Sodium azide Constituents: 9% PBS, 40% Glycerol (glycerin, glycerine), 0.05% BSA, 50% Tissue culture supernatant
精製度	Protein A purified

ポリ/モノ	モノクローナル
クローン名	EPR1564
アイソタイプ	IgG

アプリケーション

The Abpromise guarantee **Abpromise保証は、次のテスト済みアプリケーションにおけるab101562の使用に適用されます**
 アプリケーションノートには、推奨の開始希釈率がありますが、適切な希釈率につきましてはご検討ください。

アプリケーション	Abreviews	特記事項
WB	★☆☆☆☆ (1)	1/1000 - 1/10000. Predicted molecular weight: 37 kDa.
IHC-P	★★★★★ (1)	1/250 - 1/500. Perform heat mediated antigen retrieval with citrate buffer pH 6 before commencing with IHC staining protocol. Antigen retrieval is strongly recommended.

追加情報 Is unsuitable for Flow Cyt, ICC/IF or IP.

ターゲット情報

パスウェイ	Fermentation; pyruvate fermentation to lactate; (S)-lactate from pyruvate: step 1/1.
関連疾患	Defects in LDHA are the cause of glycogen storage disease type 11 (GSD11) [MIM:612933]. A metabolic disorder that results in exertional myoglobinuria, pain, cramps and easy fatigue.
配列類似性	Belongs to the LDH/MDH superfamily. LDH family.
翻訳後修飾	ISGylated.
細胞内局在	Cytoplasm.

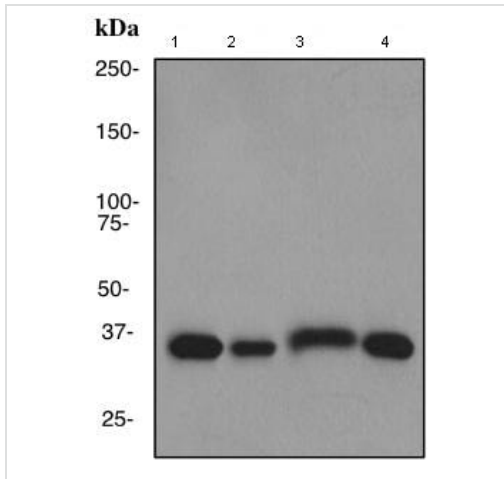
画像



Staining of Human Lactate Dehydrogenase in a Formalin/PFA-fixed paraffin-embedded section of human Muscle using **ab101526** at a dilution of 1/500.

Perform heat mediated antigen retrieval with citrate buffer pH 6 before commencing with IHC staining protocol.

Immunohistochemistry (Formalin/PFA-fixed paraffin-embedded sections) - Anti-Lactate Dehydrogenase antibody [EPR1564] (ab101562)



Western blot - Anti-Lactate Dehydrogenase antibody [EPR1564] (ab101562)

All lanes : Anti-Lactate Dehydrogenase antibody [EPR1564] (ab101562) at 1/1000 dilution

Lane 1 : HeLa cell lysate

Lane 2 : MCF7 cell lysate





Lane 3 : A375 cell lysate

Lane 4 : 293T cell lysate

Lysates/proteins at 10 µg per lane.

Predicted band size: 37 kDa

Why choose a recombinant antibody?

 <p>Research with confidence Consistent and reproducible results</p>	 <p>Long-term and scalable supply Recombinant technology</p>
 <p>Success from the first experiment Confirmed specificity</p>	 <p>Ethical standards compliant Animal-free production</p>

Anti-Lactate Dehydrogenase antibody [EPR1564] (ab101562)

Please note: All products are "FOR RESEARCH USE ONLY. NOT FOR USE IN DIAGNOSTIC PROCEDURES"

Our Abpromise to you: Quality guaranteed and expert technical support

- Replacement or refund for products not performing as stated on the datasheet
- Valid for 12 months from date of delivery
- Response to your inquiry within 24 hours
- We provide support in Chinese, English, French, German, Japanese and Spanish
- Extensive multi-media technical resources to help you
- We investigate all quality concerns to ensure our products perform to the highest standards

If the product does not perform as described on this datasheet, we will offer a refund or replacement. For full details of the Abpromise, please visit <https://www.abcam.co.jp/abpromise> or contact our technical team.

Terms and conditions

- Guarantee only valid for products bought direct from Abcam or one of our authorized distributors