

# Anti-L3MBTL2 antibody ab101272

画像数 2

### 製品の概要

製品名	Anti-L3MBTL2 antibody
製品の詳細	Rabbit polyclonal to L3MBTL2
由来種	Rabbit
アプリケーション	<b>適用あり:</b> IHC-P, IP
種交差性	<b>交差種:</b> Human <b>交差が予測される動物種:</b> Cow, Chimpanzee, Gorilla, Orangutan 
免疫原	Synthetic peptide corresponding to a region between residue 655 and 705 of Human L3MBTL2 (NP_113676.2).
ポジティブ・コントロール	HeLa whole cell lysate
特記事項	<p>The Life Science industry has been in the grips of a reproducibility crisis for a number of years. Abcam is leading the way in addressing this with our range of recombinant monoclonal antibodies and knockout edited cell lines for gold-standard validation. Please check that this product meets your needs before purchasing.</p> <p>If you have any questions, special requirements or concerns, please send us an inquiry and/or contact our Support team ahead of purchase. Recommended alternatives for this product can be found below, along with publications, customer reviews and Q&amp;As</p>

### 製品の特性

製品の状態	Liquid
保存方法	Shipped at 4°C. Upon delivery aliquot and store at -20°C. Avoid freeze / thaw cycles.
バッファー	pH: 7 Preservative: 0.09% Sodium azide Constituent: Tris citrate/phosphate
精製度	Immunogen affinity purified
特記事項 (精製)	ab101272 was affinity purified using an epitope specific to L3MBTL2 immobilized on solid support.
ポリ/モノ	ポリクローナル
アイソタイプ	IgG

## アプリケーション

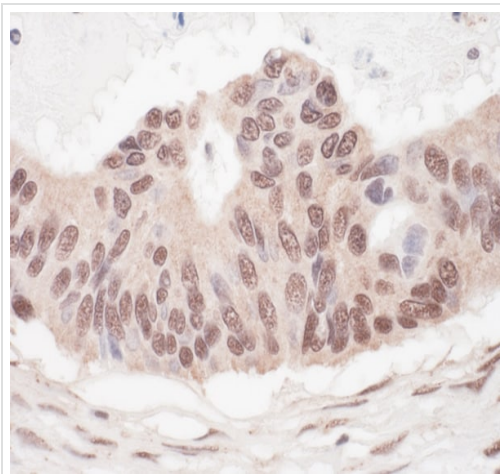
**The Abpromise guarantee** Abpromise保証は、 次のテスト済みアプリケーションにおけるab101272の使用に適用されます  
アプリケーションノートには、推奨の開始希釈率がありますが、適切な希釈率につきましてはご検討ください。

アプリケーション	Abreviews	特記事項
IHC-P		1/1000 - 1/5000. Perform heat mediated antigen retrieval with citrate buffer pH 6 before commencing with IHC staining protocol.
IP		Use at 2-5 µg/mg of lysate.

## ターゲット情報

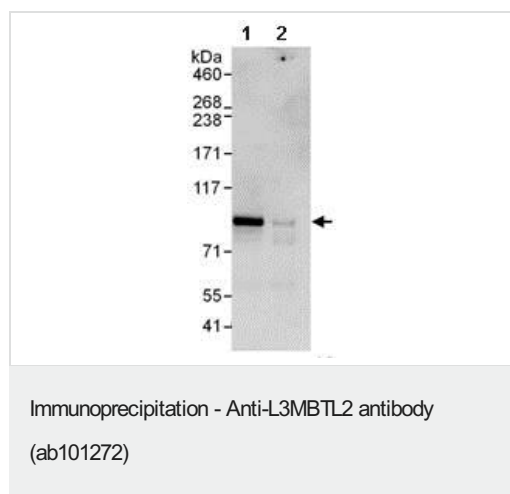
機能	Putative Polycomb group (PcG) protein. PcG proteins maintain the transcriptionally repressive state of genes, probably via a modification of chromatin, rendering it heritably changed in its expressibility. Its association with a chromatin-remodeling complex suggests that it may contribute to prevent expression of genes that trigger the cell into mitosis. Binds to monomethylated and dimethylated 'Lys-20' on histone H4. Binds histone H3 peptides that are monomethylated or dimethylated on 'Lys-4', 'Lys-9' or 'Lys-27'.
配列類似性	Contains 1 FCS-type zinc finger. Contains 4 MBT repeats.
細胞内局在	Nucleus.

## 画像



Immunohistochemistry (Formalin/PFA-fixed paraffin-embedded sections) analysis of human ovarian carcinoma tissue labelling L3MBTL2 with ab101272 at 1/1000 (1µg/ml).

Immunohistochemistry (Formalin/PFA-fixed paraffin-embedded sections) - Anti-L3MBTL2 antibody (ab101272)



Detection of L3MBTL2 in Immunoprecipitates of HeLa whole cell lysate (1 mg for IP, 20% of IP loaded) using ab101272 at 3 µg/mg lysate for IP (Lane 1). An anti-L3MBTL2 antibody which recognizes an upstream epitope was used in Lane 2, and also for the subsequent WB detection at 1 µg/ml. Lane 3 represents control IgG. Detection: Chemiluminescence with an exposure time of 30 seconds.

**Please note:** All products are "FOR RESEARCH USE ONLY. NOT FOR USE IN DIAGNOSTIC PROCEDURES"

### Our Abpromise to you: Quality guaranteed and expert technical support

---

- Replacement or refund for products not performing as stated on the datasheet
- Valid for 12 months from date of delivery
- Response to your inquiry within 24 hours
- We provide support in Chinese, English, French, German, Japanese and Spanish
- Extensive multi-media technical resources to help you
- We investigate all quality concerns to ensure our products perform to the highest standards

If the product does not perform as described on this datasheet, we will offer a refund or replacement. For full details of the Abpromise, please visit <https://www.abcam.co.jp/abpromise> or contact our technical team.

### Terms and conditions

---

- Guarantee only valid for products bought direct from Abcam or one of our authorized distributors