

Anti-Kv4.2/KCND2 antibody ab123543

3 References [画像数 2](#)

製品の概要

製品名	Anti-Kv4.2/KCND2 antibody
製品の詳細	Rabbit polyclonal to Kv4.2/KCND2
由来種	Rabbit
アプリケーション	適用あり: WB, ICC/IF
種交差性	交差種: Mouse, Rat, Human 交差が予測される動物種: Rabbit, Chicken, Cow, Dog, Pig, Macaque monkey, Chinese hamster, Orangutan 
免疫原	Synthetic peptide corresponding to Human Kv4.2/KCND2 aa 600 to the C-terminus conjugated to keyhole limpet haemocyanin. (Peptide available as ab138806)
ポジティブ・コントロール	This antibody gave a positive signal in Mouse and Rat Heart tissue lysates. This antibody gave a positive result in IF in the following Formaldehyde fixed cell line: SKNSH
特記事項	<p>The Life Science industry has been in the grips of a reproducibility crisis for a number of years. Abcam is leading the way in addressing this with our range of recombinant monoclonal antibodies and knockout edited cell lines for gold-standard validation. Please check that this product meets your needs before purchasing.</p> <p>If you have any questions, special requirements or concerns, please send us an inquiry and/or contact our Support team ahead of purchase. Recommended alternatives for this product can be found below, along with publications, customer reviews and Q&As</p>

製品の特性

製品の状態	Liquid
保存方法	Shipped at 4°C. Store at +4°C short term (1-2 weeks). Upon delivery aliquot. Store at -20°C or -80°C. Avoid freeze / thaw cycle.
バッファー	pH: 7.40 Preservative: 0.02% Sodium azide Constituent: PBS
	Batches of this product that have a concentration < 1mg/ml may have BSA added as a stabilising agent. If you would like information about the formulation of a specific lot, please contact our scientific support team who will be happy to help.

精製度	Immunogen affinity purified
ポリ/モノ	ポリクローナル
アイソタイプ	IgG

アプリケーション

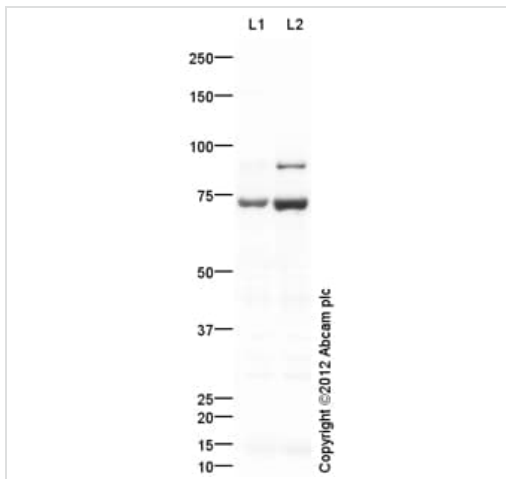
The Abpromise guarantee **Abpromise保証は、** 次のテスト済みアプリケーションにおけるab123543の使用に適用されます
アプリケーションノートには、推奨の開始希釈率がありますが、適切な希釈率につきましてはご検討ください。

アプリケーション	Abreviews	特記事項
WB		Use a concentration of 1 µg/ml. Detects a band of approximately 74 kDa (predicted molecular weight: 70 kDa).
ICC/IF		Use a concentration of 5 µg/ml.

ターゲット情報

機能	Pore-forming (alpha) subunit of voltage-gated rapidly inactivating A-type potassium channels. May contribute to I(To) current in heart and I(Sa) current in neurons. Channel properties are modulated by interactions with other alpha subunits and with regulatory subunits.
組織特異性	Highly expressed throughout the brain. Expression is very low or absent in other tissues.
配列類似性	Belongs to the potassium channel family. D (Shal) (TC 1.A.1.2) subfamily. Kv4.2/KCND2 sub-subfamily.
ドメイン	The segment S4 is probably the voltage-sensor and is characterized by a series of positively charged amino acids at every third position.
翻訳後修飾	Phosphorylated on serine and threonine residues.
細胞内局在	Cell membrane. Cell projection > dendrite. Detected in dendrites in cultured hippocampal neurons. Association with KCNIP2 probably enhances cell surface expression.

画像



Western blot - Anti-Kv4.2/KCND2 antibody
(ab123543)

All lanes : Anti-Kv4.2/KCND2 antibody (ab123543) at 1 µg/ml

Lane 1 : Heart (Mouse) Tissue Lysate

Lane 2 : Heart (Rat) Tissue Lysate

Lysates/proteins at 10 µg per lane.

Secondary

All lanes : Goat Anti-Rabbit IgG H&L (HRP) preadsorbed
(**ab97080**) at 1/5000 dilution

Developed using the ECL technique.

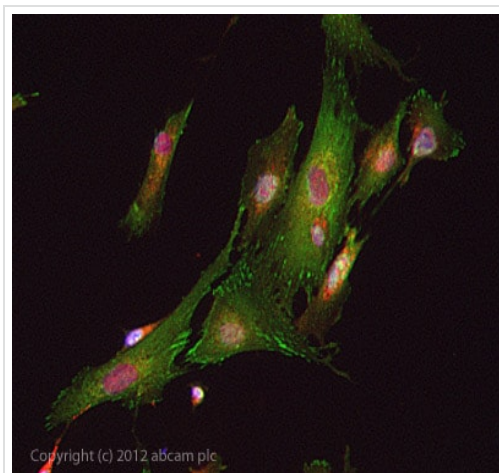
Performed under reducing conditions.

Predicted band size: 70 kDa

Observed band size: 74 kDa

Additional bands at: 90 kDa. We are unsure as to the identity of these extra bands.

Exposure time: 4 minutes



Immunocytochemistry/ Immunofluorescence - Anti-
Kv4.2/KCND2 antibody (ab123543)

ab123543 stained SKNSH cells. The cells were 4% formaldehyde fixed (10 min) and then incubated in 1%BSA / 10% normal goat serum / 0.3M glycine in 0.1% PBS-Tween for 1h to permeabilise the cells and block non-specific protein-protein interactions. The cells were then incubated with the antibody ab123543 at 5µg/ml overnight at +4°C. The secondary antibody (green) was DyLight® 488 goat anti- rabbit (**ab96899**) IgG (H+L) used at a 1/1000 dilution for 1h. Alexa Fluor® 594 WGA was used to label plasma membranes (red) at a 1/200 dilution for 1h. DAPI was used to stain the cell nuclei (blue) at a concentration of 1.43µM.

Please note: All products are "FOR RESEARCH USE ONLY. NOT FOR USE IN DIAGNOSTIC PROCEDURES"

Our Abpromise to you: Quality guaranteed and expert technical support

- Replacement or refund for products not performing as stated on the datasheet
- Valid for 12 months from date of delivery

- Response to your inquiry within 24 hours
- We provide support in Chinese, English, French, German, Japanese and Spanish
- Extensive multi-media technical resources to help you
- We investigate all quality concerns to ensure our products perform to the highest standards

If the product does not perform as described on this datasheet, we will offer a refund or replacement. For full details of the Abpromise, please visit <https://www.abcam.co.jp/abpromise> or contact our technical team.

Terms and conditions

- Guarantee only valid for products bought direct from Abcam or one of our authorized distributors