

Anti-KSR1 (phospho S404) antibody [EP2358Y] ab76248

RabMAb

画像数 2

製品の概要

製品名	Anti-KSR1 (phospho S404) antibody [EP2358Y]
製品の詳細	Rabbit monoclonal [EP2358Y] to KSR1 (phospho S404)
由来種	Rabbit
アプリケーション	適用あり: ICC/IF, WB 適用なし: Flow Cyt, IHC-P or IP
種交差性	交差種: Human
免疫原	Synthetic peptide. This information is proprietary to Abcam and/or its suppliers.
ポジティブ・コントロール	WB: HeLa cell lysates, untreated or treated with Calyculin A ICC/IF: Sh-SY-5Y cells
特記事項	<p>Our RabMAb[®] technology is a patented hybridoma-based technology for making rabbit monoclonal antibodies. For details on our patents, please refer to RabMAb[®] patents.</p> <p>The Life Science industry has been in the grips of a reproducibility crisis for a number of years. Abcam is leading the way in addressing this with our range of recombinant monoclonal antibodies and knockout edited cell lines for gold-standard validation. Please check that this product meets your needs before purchasing.</p> <p>If you have any questions, special requirements or concerns, please send us an inquiry and/or contact our Support team ahead of purchase. Recommended alternatives for this product can be found below, along with publications, customer reviews and Q&As</p> <p>Mouse, Rat: We have preliminary internal testing data to indicate this antibody may not react with these species. Please contact us for more information.</p>

製品の特性

製品の状態	Liquid
保存方法	Shipped at 4°C. Store at -20°C. Stable for 12 months at -20°C.
バッファー	pH: 7.20 Preservative: 0.05% Sodium azide Constituents: 0.1% BSA, 40% Glycerol (glycerin, glycerine), 9.85% Tris glycine, 50% Tissue culture supernatant
精製度	Tissue culture supernatant

ポリ/モノ	モノクローナル
クローン名	EP2358Y
アイソタイプ	IgG

アプリケーション

The Abpromise guarantee **Abpromise保証は、**次のテスト済みアプリケーションにおけるab76248の使用に適用されます
アプリケーションノートには、推奨の開始希釈率がありますが、適切な希釈率につきましてはご検討ください。

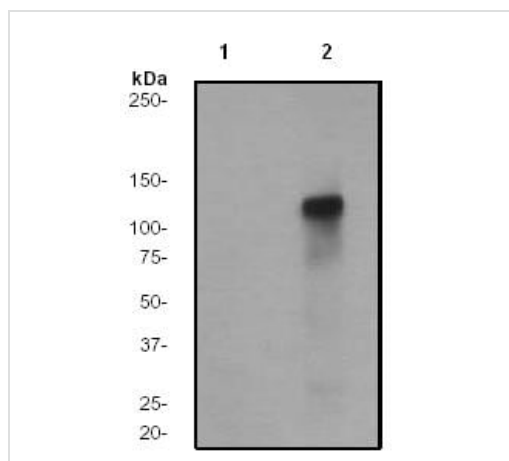
アプリケーション	Abreviews	特記事項
ICC/IF		1/100 - 1/250.
WB		1/1000 - 1/10000. Predicted molecular weight: 102 kDa.

追加情報 Is unsuitable for Flow Cyt, IHC-P or IP.

ターゲット情報

機能	Location-regulated scaffolding protein connecting MEK to RAF. Promotes MEK and RAF phosphorylation and activity through assembly of an activated signaling complex. By itself, it has no demonstrated kinase activity.
配列類似性	Belongs to the protein kinase superfamily. TKL Ser/Thr protein kinase family. Contains 1 phorbol-ester/DAG-type zinc finger. Contains 1 protein kinase domain.
翻訳後修飾	Phosphorylated on Ser-309 and, to a higher extent, on Ser-404 by MARK3. Dephosphorylated on Ser-404 by PPP2CA. In resting cells, phosphorylated KSR1 is cytoplasmic and in stimulated cells, dephosphorylated KSR1 is membrane-associated.
細胞内局在	Cytoplasm. Membrane. In unstimulated cells, where the phosphorylated form is bound to a 14-3-3 protein, sequestration in the cytoplasm occurs. Following growth factor treatment, the protein is free for membrane translocation, and it moves from the cytoplasm to the cell periphery.

画像



Western blot - Anti-KSR1 (phospho S404) antibody [EP2358Y] (ab76248)

All lanes : Anti-KSR1 (phospho S404) antibody [EP2358Y] (ab76248) at 1/2000 dilution

Lane 1 : HeLa cell lysate (untreated)

Lane 2 : HeLa cell lysate, treated with Calyculin A

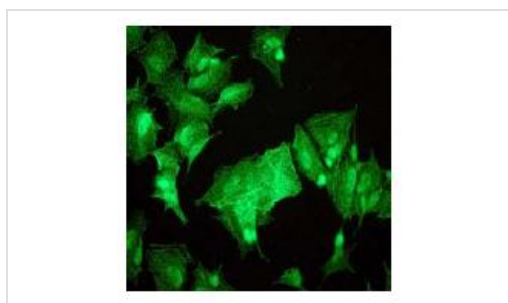
Lysates/proteins at 10 µg per lane.

Secondary

All lanes : Goat anti-rabbit HRP labelled IgG at 1/1000 dilution

Predicted band size: 102 kDa

Observed band size: 110 kDa



Immunocytochemistry/ Immunofluorescence - KSR1 (phospho S404) antibody [EP2358Y] (ab76248)

Immunofluorescent staining of Sh-SY-5Y cells, using ab76248, at 1/100 dilution.

Please note: All products are "FOR RESEARCH USE ONLY. NOT FOR USE IN DIAGNOSTIC PROCEDURES"

Our Abpromise to you: Quality guaranteed and expert technical support

- Replacement or refund for products not performing as stated on the datasheet
- Valid for 12 months from date of delivery
- Response to your inquiry within 24 hours
- We provide support in Chinese, English, French, German, Japanese and Spanish
- Extensive multi-media technical resources to help you
- We investigate all quality concerns to ensure our products perform to the highest standards

If the product does not perform as described on this datasheet, we will offer a refund or replacement. For full details of the Abpromise, please visit <https://www.abcam.co.jp/abpromise> or contact our technical team.

Terms and conditions

- Guarantee only valid for products bought direct from Abcam or one of our authorized distributors