

Anti-KSR1 antibody [EPR2421Y] - BSA and Azide free ab227109

KO 評価済 リコンビナント RabMAb

画像数 3

製品の概要

製品名	Anti-KSR1 antibody [EPR2421Y] - BSA and Azide free
製品の詳細	Rabbit monoclonal [EPR2421Y] to KSR1 - BSA and Azide free
由来種	Rabbit
アプリケーション	適用あり: IHC-P, WB 適用なし: Flow Cyt, ICC/IF or IP
種交差性	交差種: Mouse, Rat, Human
免疫原	Synthetic peptide. This information is proprietary to Abcam and/or its suppliers.
ポジティブ・コントロール	WB: Wild-type HAP1 cell lysate. HeLa, MEF, Rat1 and HEK-293 cell lysate. IHC-P: Human cervical carcinoma tissue.
特記事項	<p>ab227109 is the carrier-free version of ab68483.</p> <p>Our carrier-free antibodies are typically supplied in a PBS-only formulation, purified and free of BSA, sodium azide and glycerol. The carrier-free buffer and high concentration allow for increased conjugation efficiency.</p> <p>This conjugation-ready format is designed for use with fluorochromes, metal isotopes, oligonucleotides, and enzymes, which makes them ideal for antibody labelling, functional and cell-based assays, flow-based assays (e.g. mass cytometry) and Multiplex Imaging applications.</p> <p>Use our conjugation kits for antibody conjugates that are ready-to-use in as little as 20 minutes with <1 minute hands-on-time and 100% antibody recovery: available for fluorescent dyes, HRP, biotin and gold.</p> <p>This product is compatible with the Maxpar[®] Antibody Labeling Kit from Fluidigm, without the need for antibody preparation. Maxpar[®] is a trademark of Fluidigm Canada Inc.</p>

製品の特性

製品の状態	Liquid
保存方法	Shipped at 4°C. Store at +4°C. Do Not Freeze.
バッファー	pH: 7.2 Constituent: PBS
キャリア・フリー	はい

精製度	Protein A purified
ポリ/モノ	モノクローナル
クローン名	EPR2421Y
アイソタイプ	IgG

アプリケーション

The Abpromise guarantee Abpromise保証は、次のテスト済みアプリケーションにおけるab227109の使用に適用されます
アプリケーションノートには、推奨の開始希釈率がありますが、適切な希釈率につきましてはご検討ください。

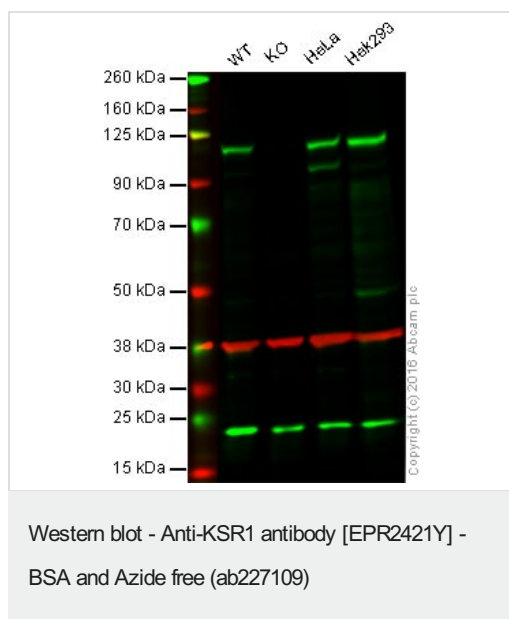
アプリケーション	Abreviews	特記事項
IHC-P		Use at an assay dependent concentration. Perform heat mediated antigen retrieval before commencing with IHC staining protocol. The mouse and rat recommendation is based on the WB results. This antibody may not be suitable for IHC with mouse and rat samples. See IHC antigen retrieval protocols
WB		Use at an assay dependent concentration. Detects a band of approximately 120 kDa (predicted molecular weight: 102 kDa).

追加情報 Is unsuitable for Flow Cyt, ICC/IF or IP.

ターゲット情報

機能	Location-regulated scaffolding protein connecting MEK to RAF. Promotes MEK and RAF phosphorylation and activity through assembly of an activated signaling complex. By itself, it has no demonstrated kinase activity.
配列類似性	Belongs to the protein kinase superfamily. TKL Ser/Thr protein kinase family. Contains 1 phorbol-ester/DAG-type zinc finger. Contains 1 protein kinase domain.
翻訳後修飾	Phosphorylated on Ser-309 and, to a higher extent, on Ser-404 by MARK3. Dephosphorylated on Ser-404 by PPP2CA. In resting cells, phosphorylated KSR1 is cytoplasmic and in stimulated cells, dephosphorylated KSR1 is membrane-associated.
細胞内局在	Cytoplasm. Membrane. In unstimulated cells, where the phosphorylated form is bound to a 14-3-3 protein, sequestration in the cytoplasm occurs. Following growth factor treatment, the protein is free for membrane translocation, and it moves from the cytoplasm to the cell periphery.

画像



This WB data was generated using the same anti-KSR1 antibody clone, EPR2421Y, in a different buffer formulation (cat# [ab68483](#)).

Lane 1: Wild-type HAP1 cell lysate (40 µg)

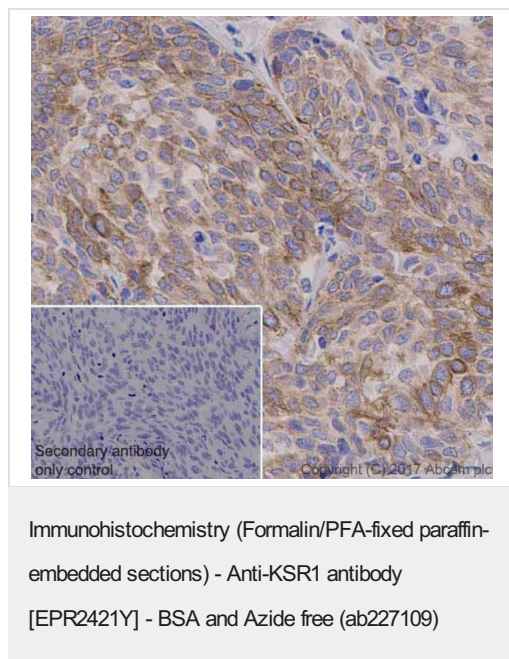
Lane 2: KSR1 knockout HAP1 cell lysate (40 µg)

Lane 3: HeLa cell lysate (20 µg)

Lane 4: HEK293 cell lysate (20 µg)

Lanes 1 - 4: Merged signal (red and green). Green - [ab68483](#) observed at 120 kDa. Red - loading control, [ab8245](#), observed at 37 kDa.

Unpurified [ab68483](#) was shown to recognize KSR1 when KSR1 knockout samples were used, along with additional cross-reactive bands. Wild-type and KSR1 knockout samples were subjected to SDS-PAGE. Ab68483 and [ab8245](#) (loading control to GAPDH) were diluted at 1/1000 and 1:10,000 dilution respectively and incubated overnight at 4°C. Blots were developed with Goat anti-Rabbit IgG H&L (IRDye® 800CW) preadsorbed ([ab216773](#)) and Goat anti-Mouse IgG H&L (IRDye® 680RD) preadsorbed ([ab216776](#)) secondary antibodies at 1:10,000 dilution for 1 hour at room temperature before imaging.



This IHC data was generated using the same anti-KSR1 antibody clone, EPR2421Y, in a different buffer formulation (cat# [ab68483](#)).

Immunohistochemistry (Formalin/PFA-fixed paraffin-embedded sections) analysis of human cervical carcinoma tissue sections labeling KSR1 with Purified [ab68483](#) at 1:100 dilution (1.49 µg/ml). Heat mediated antigen retrieval was performed using Perform heat mediated antigen retrieval using EDTA Buffer, pH9.0. Tissue was counterstained with Hematoxylin. ImmunoHistoProbe one step HRP Polymer (ready to use) secondary antibody was used at 1:0 dilution. PBS instead of the primary antibody was used as the negative control.

Why choose a recombinant antibody?



Research with confidence
Consistent and reproducible results



Long-term and scalable supply
Recombinant technology



Success from the first experiment
Confirmed specificity



Ethical standards compliant
Animal-free production

Anti-KSR1 antibody [EPR2421Y] - BSA and Azide free (ab227109)

Please note: All products are "FOR RESEARCH USE ONLY. NOT FOR USE IN DIAGNOSTIC PROCEDURES"

Our Abpromise to you: Quality guaranteed and expert technical support

- Replacement or refund for products not performing as stated on the datasheet
- Valid for 12 months from date of delivery
- Response to your inquiry within 24 hours
- We provide support in Chinese, English, French, German, Japanese and Spanish
- Extensive multi-media technical resources to help you
- We investigate all quality concerns to ensure our products perform to the highest standards

If the product does not perform as described on this datasheet, we will offer a refund or replacement. For full details of the Abpromise, please visit <https://www.abcam.co.jp/abpromise> or contact our technical team.

Terms and conditions

- Guarantee only valid for products bought direct from Abcam or one of our authorized distributors