

Anti-KSR1 antibody [EPR2421Y] ab68483

KO 評価済 リコンビナント RabMAb

4 References 画像数 7

製品の概要

製品名	Anti-KSR1 antibody [EPR2421Y]
製品の詳細	Rabbit monoclonal [EPR2421Y] to KSR1
由来種	Rabbit
アプリケーション	適用あり: WB, IHC-P 適用なし: Flow Cyt, ICC/IF or IP
種交差性	交差種: Mouse, Rat, Human
免疫原	Synthetic peptide. This information is proprietary to Abcam and/or its suppliers.
ポジティブ・コントロール	WB: Wild-type HAP1 cell lysate. HeLa, MEF, Rat1 and HEK-293 cell lysate. IHC-P: Human cervical carcinoma tissue.
特記事項	<p>This product is a recombinant monoclonal antibody, which offers several advantages including:</p> <ul style="list-style-type: none"> - High batch-to-batch consistency and reproducibility - Improved sensitivity and specificity - Long-term security of supply - Animal-free production <p>For more information see here.</p> <p>Our RabMAb[®] technology is a patented hybridoma-based technology for making rabbit monoclonal antibodies. For details on our patents, please refer to RabMAb[®] patents.</p>

製品の特性

製品の状態	Liquid
保存方法	Shipped at 4°C. Store at +4°C short term (1-2 weeks). Upon delivery aliquot. Store at -20°C. Avoid freeze / thaw cycle.
バッファー	pH: 7.2 Preservative: 0.01% Sodium azide Constituents: 40% Glycerol, 0.05% BSA, 59% PBS
精製度	Protein A purified
ポリ/モノ	モノクローナル
クローン名	EPR2421Y

アプリケーション

The Abpromise guarantee **Abpromise保証は、次のテスト済みアプリケーションにおけるab68483の使用に適用されます**
 アプリケーションノートには、推奨の開始希釈率がありますが、適切な希釈率につきましてはご検討ください。

アプリケーション	Abreviews	特記事項
WB		1/500 - 1/2000. Detects a band of approximately 120 kDa (predicted molecular weight: 102 kDa).
IHC-P		1/100 - 1/250. Perform heat mediated antigen retrieval before commencing with IHC staining protocol. The mouse and rat recommendation is based on the WB results. This antibody may not be suitable for IHC with mouse and rat samples. See <u>IHC antigen retrieval protocols</u> .

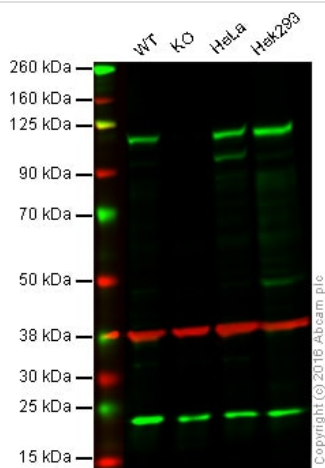
追加情報

Is unsuitable for Flow Cyt, ICC/IF or IP.

ターゲット情報

機能	Location-regulated scaffolding protein connecting MEK to RAF. Promotes MEK and RAF phosphorylation and activity through assembly of an activated signaling complex. By itself, it has no demonstrated kinase activity.
配列類似性	Belongs to the protein kinase superfamily. TKL Ser/Thr protein kinase family. Contains 1 phorbol-ester/DAG-type zinc finger. Contains 1 protein kinase domain.
翻訳後修飾	Phosphorylated on Ser-309 and, to a higher extent, on Ser-404 by MARK3. Dephosphorylated on Ser-404 by PPP2CA. In resting cells, phosphorylated KSR1 is cytoplasmic and in stimulated cells, dephosphorylated KSR1 is membrane-associated.
細胞内局在	Cytoplasm. Membrane. In unstimulated cells, where the phosphorylated form is bound to a 14-3-3 protein, sequestration in the cytoplasm occurs. Following growth factor treatment, the protein is free for membrane translocation, and it moves from the cytoplasm to the cell periphery.

画像



Western blot - Anti-KSR1 antibody [EPR2421Y]
(ab68483)

Lane 1: Wild-type HAP1 cell lysate (40 µg)

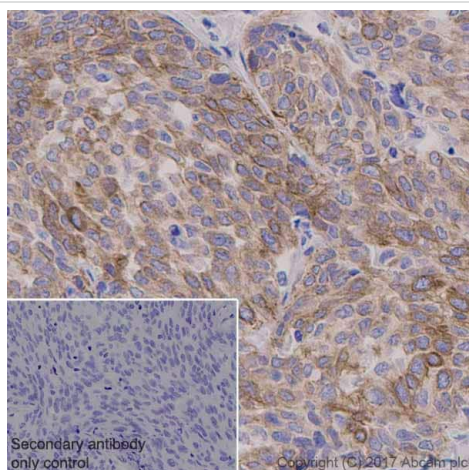
Lane 2: KSR1 knockout HAP1 cell lysate (40 µg)

Lane 3: HeLa cell lysate (20 µg)

Lane 4: HEK293 cell lysate (20 µg)

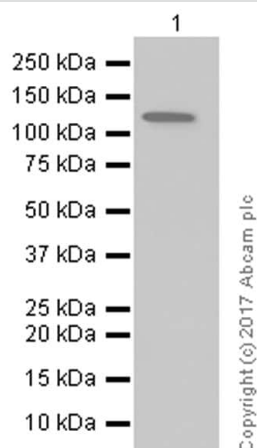
Lanes 1 - 4: Merged signal (red and green). Green - ab68483 observed at 120 kDa. Red - loading control, **ab8245**, observed at 37 kDa.

Unpurified ab68483 was shown to recognize KSR1 when KSR1 knockout samples were used, along with additional cross-reactive bands. Wild-type and KSR1 knockout samples were subjected to SDS-PAGE. Ab68483 and **ab8245** (loading control to GAPDH) were diluted at 1/1000 and 1:10,000 dilution respectively and incubated overnight at 4°C. Blots were developed with Goat anti-Rabbit IgG H&L (IRDye® 800CW) preadsorbed (**ab216773**) and Goat anti-Mouse IgG H&L (IRDye® 680RD) preadsorbed (**ab216776**) secondary antibodies at 1:10,000 dilution for 1 hour at room temperature before imaging.



Immunohistochemistry (Formalin/PFA-fixed paraffin-embedded sections) - Anti-KSR1 antibody [EPR2421Y] (ab68483)

Immunohistochemistry (Formalin/PFA-fixed paraffin-embedded sections) analysis of human cervical carcinoma tissue sections labeling KSR1 with Purified ab68483 at 1:100 dilution (1.49 µg/ml). Heat mediated antigen retrieval was performed using Perform heat mediated antigen retrieval using EDTA Buffer, pH9.0. Tissue was counterstained with Hematoxylin. ImmunoHistoProbe one step HRP Polymer (ready to use) secondary antibody was used at 1:0 dilution. PBS instead of the primary antibody was used as the negative control.



Western blot - Anti-KSR1 antibody [EPR2421Y]
(ab68483)

Anti-KSR1 antibody [EPR2421Y] (ab68483) at 1/1000 dilution
(purified) + MEF (Mouse embryonic fibroblast (immortalized)) whole
cell lysates at 15 µg

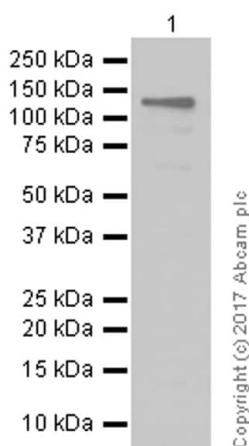
Secondary

Goat Anti-Rabbit IgG H&L (HRP) ([ab97051](#)) at 1/20000 dilution

Predicted band size: 102 kDa

Observed band size: 110 kDa

Blocking and diluting buffer: 5% NFDM/TBST



Western blot - Anti-KSR1 antibody [EPR2421Y]
(ab68483)

Anti-KSR1 antibody [EPR2421Y] (ab68483) at 1/1000 dilution
(purified) + HEK-293 (Human embryonic kidney epithelial cell)
whole cell lysates at 15 µg

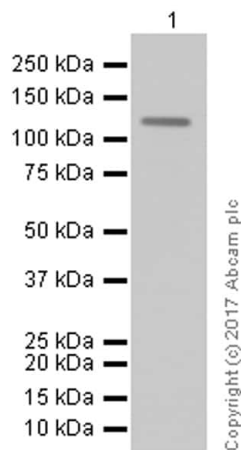
Secondary

Goat Anti-Rabbit IgG H&L (HRP) ([ab97051](#)) at 1/20000 dilution

Predicted band size: 102 kDa

Observed band size: 110 kDa

Blocking and diluting buffer: 5% NFDM/TBST



Western blot - Anti-KSR1 antibody [EPR2421Y]
(ab68483)

Anti-KSR1 antibody [EPR2421Y] (ab68483) at 1/1000 dilution
(purified) + Rat1 (Rat embryonic fibroblast) whole cell lysates

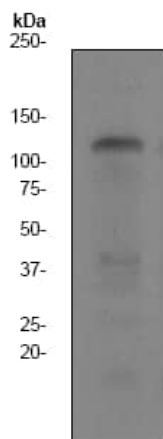
Secondary

Goat Anti-Rabbit IgG H&L (HRP) ([ab97051](#)) at 1/20000 dilution

Predicted band size: 102 kDa

Observed band size: 110 kDa

Blocking and diluting buffer: 5% NFDM/TBST



Western blot - Anti-KSR1 antibody [EPR2421Y]
(ab68483)

Anti-KSR1 antibody [EPR2421Y] (ab68483) at 1/2000 dilution
(unpurified) + HEK-293 (Human epithelial cell line from embryonic kidney) cell lysate at 10 µg

Secondary

goat anti rabbit HRP at 1/2000 dilution

Predicted band size: 102 kDa

Observed band size: 120 kDa

Why choose a recombinant antibody?



Research with confidence
Consistent and reproducible results



Long-term and scalable supply
Recombinant technology



Success from the first experiment
Confirmed specificity



Ethical standards compliant
Animal-free production

Anti-KSR1 antibody [EPR2421Y] (ab68483)

Our Abpromise to you: Quality guaranteed and expert technical support

- Replacement or refund for products not performing as stated on the datasheet
- Valid for 12 months from date of delivery
- Response to your inquiry within 24 hours

- We provide support in Chinese, English, French, German, Japanese and Spanish
- Extensive multi-media technical resources to help you
- We investigate all quality concerns to ensure our products perform to the highest standards

If the product does not perform as described on this datasheet, we will offer a refund or replacement. For full details of the Abpromise, please visit <https://www.abcam.co.jp/abpromise> or contact our technical team.

Terms and conditions

- Guarantee only valid for products bought direct from Abcam or one of our authorized distributors