

Anti-KSHV ORF8 antibody ab36599

2 References [画像数 1](#)

製品の概要

製品名	Anti-KSHV ORF8 antibody
製品の詳細	Rabbit polyclonal to KSHV ORF8
由来種	Rabbit
アプリケーション	適用あり: WB
種交差性	交差種: Human herpesvirus 8
免疫原	Synthetic peptide, corresponding to amino acids sequence of KSHV ORF8.
ポジティブ・コントロール	TPA-induced BCBL-1 cell lysate.
特記事項	<p>The Life Science industry has been in the grips of a reproducibility crisis for a number of years. Abcam is leading the way in addressing this with our range of recombinant monoclonal antibodies and knockout edited cell lines for gold-standard validation. Please check that this product meets your needs before purchasing.</p> <p>If you have any questions, special requirements or concerns, please send us an inquiry and/or contact our Support team ahead of purchase. Recommended alternatives for this product can be found below, along with publications, customer reviews and Q&As</p>

製品の特性

製品の状態	Liquid
保存方法	Shipped at 4°C. Upon delivery aliquot and store at -20°C or -80°C. Avoid repeated freeze / thaw cycles.
バッファー	Preservative: 0.05% Sodium azide Constituent: PBS
精製度	Ammonium Sulphate Precipitation
ポリ/モノ	ポリクローナル
アイソタイプ	IgG

アプリケーション

The Abpromise guarantee **Abpromise保証は、次のテスト済みアプリケーションにおけるab36599の使用に適用されます**
 アプリケーションノートには、推奨の開始希釈率がありますが、適切な希釈率につきましてはご検討ください。

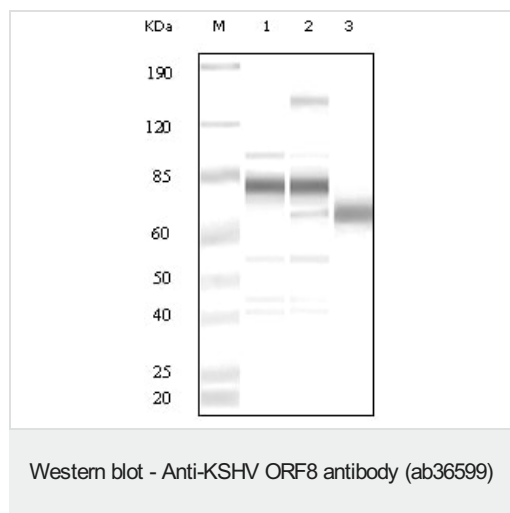
アプリケーション	Abreviews	特記事項
WB		1/500 - 1/1000. Detects a band of approximately 68 kDa.

ターゲット情報

関連性

Kaposi's sarcoma-associated herpesvirus (KSHV) belongs to the gamma-(2)-herpesvirus subfamily and has been closely linked to the Kaposi's sarcoma, primary effusion lymphoma (PEL) and multicentric Castlemans disease. The genome of KSHV is 165-170 kb and contains at least 88 open reading frames. KSHV ORF8 is a virion envelope-associated protein. Akula et al (2003) report it acts as a Glycoprotein B mediated signaling during virus entry. This Glycoprotein possesses the Arg-Gly-Asp (RGD) motif and utilizes alpha3beta1 integrin as one of the receptors for its entry into the target cells.

画像



All lanes : Anti-KSHV ORF8 antibody (ab36599)

Lane 1 : Uninduced BCBL-1 cell lysate

Lane 2 : TPA induced BCBL-1 cell lysate

Lane 3 : Purified virion

Please note: All products are "FOR RESEARCH USE ONLY. NOT FOR USE IN DIAGNOSTIC PROCEDURES"

Our Abpromise to you: Quality guaranteed and expert technical support

- Replacement or refund for products not performing as stated on the datasheet
- Valid for 12 months from date of delivery
- Response to your inquiry within 24 hours
- We provide support in Chinese, English, French, German, Japanese and Spanish
- Extensive multi-media technical resources to help you
- We investigate all quality concerns to ensure our products perform to the highest standards

If the product does not perform as described on this datasheet, we will offer a refund or replacement. For full details of the Abpromise, please visit <https://www.abcam.co.jp/abpromise> or contact our technical team.

Terms and conditions

- Guarantee only valid for products bought direct from Abcam or one of our authorized distributors