

Anti-KMT5A / SETD8 / Pr-SET7 antibody ab111691

★★★★★ 3 Abbreviations 3 References 画像数 2

医薬用外劇物

製品の概要

製品名	Anti-KMT5A / SETD8 / Pr-SET7 antibody
製品の詳細	Rabbit polyclonal to KMT5A / SETD8 / Pr-SET7
由来種	Rabbit
アプリケーション	適用あり: WB, IHC-P
種交差性	交差種: Human
免疫原	Recombinant fragment corresponding to Human KMT5A/ SETD8/ Pr-SET7 aa 50-300. Recombinant fragment, corresponding to a region within amino acids 81-290 of Human KMT5A/ SETD8/ Pr-SET7, isoform 1(42kda) and 2(39KDa)
ポジティブ・コントロール	NT2D1, IMR32, U-87 MG and MCF7 whole cell lysates; HeLa xenograft tissue.
特記事項	<p>The Life Science industry has been in the grips of a reproducibility crisis for a number of years. Abcam is leading the way in addressing this with our range of recombinant monoclonal antibodies and knockout edited cell lines for gold-standard validation. Please check that this product meets your needs before purchasing.</p> <p>If you have any questions, special requirements or concerns, please send us an inquiry and/or contact our Support team ahead of purchase. Recommended alternatives for this product can be found below, along with publications, customer reviews and Q&As</p>

製品の特性

製品の状態	Liquid
保存方法	Shipped at 4°C. Upon delivery aliquot and store at -20°C or -80°C. Avoid repeated freeze / thaw cycles.
バッファー	pH: 7.00 Preservative: 0.01% Thimerosal (merthiolate) Constituents: 1.21% Tris, 0.75% Glycine, 20% Glycerol (glycerin, glycerine)
精製度	Immunogen affinity purified
ポリ/モノ	ポリクローナル
アイソタイプ	IgG

アプリケーション

The Abpromise guarantee

Abpromise保証は、次のテスト済みアプリケーションにおけるab111691の使用に適用されます

アプリケーションノートには、推奨の開始希釈率がありますが、適切な希釈率につきましてはご確認ください。

アプリケーション	Abreviews	特記事項
WB	★★★★★ (3)	1/500 - 1/3000. Predicted molecular weight: 39 kDa.
IHC-P		1/100 - 1/500. Perform heat mediated antigen retrieval with citrate buffer pH 6 before commencing with IHC staining protocol.

ターゲット情報

機能

Protein-lysine N-methyltransferase that monomethylates both histones and non-histone proteins. Specifically monomethylates 'Lys-20' of histone H4 (H4K20me1). H4K20me1 is enriched during mitosis and represents a specific tag for epigenetic transcriptional repression. Mainly functions in euchromatin regions, thereby playing a central role in the silencing of euchromatic genes. Required for cell proliferation, probably by contributing to the maintenance of proper higher order structure of DNA during mitosis. Involved in chromosome condensation and proper cytokinesis. Nucleosomes are preferred as substrate compared to free histones. Mediates monomethylation of p53/TP53 at 'Lys-382', leading to repress p53/TP53-target genes.

配列類似性

Belongs to the histone-lysine methyltransferase family. PR/SET subfamily. Contains 1 SET domain.

発生段階

Not detected during G1 phase. First detected during S through G2 phases, and peaks during mitosis (at protein level).

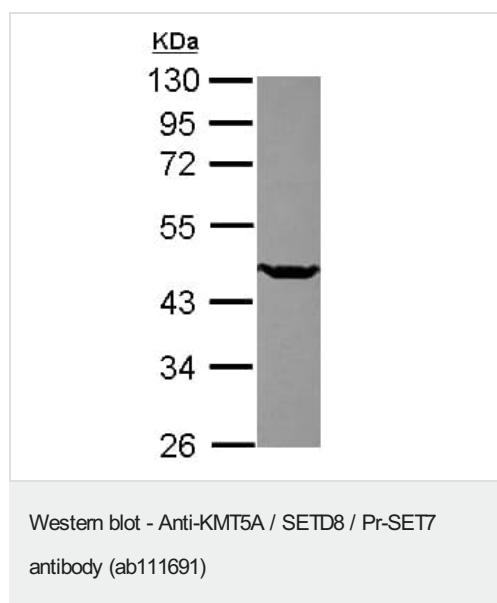
ドメイン

Although the SET domain contains the active site of enzymatic activity, both sequences upstream and downstream of the SET domain are required for methyltransferase activity.

細胞内局在

Nucleus. Chromosome. Specifically localizes to mitotic chromosomes. Associates with silent chromatin on euchromatic arms. Not associated with constitutive heterochromatin.

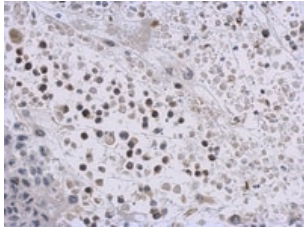
画像



Anti-KMT5A / SETD8 / Pr-SET7 antibody (ab111691) at 1/2000 dilution + U-87 MG whole cell lysate at 30 µg

Predicted band size: 39 kDa

10% SDS-PAGE.



ab111691 at 1/500 dilution staining KMT5A / SETD8 / Pr-SET7 in Formalin-fixed, paraffin-embedded HeLa xenograft tissue by Immunohistochemistry.

Immunohistochemistry (Formalin/PFA-fixed paraffin-embedded sections) - Anti-KMT5A / SETD8 / Pr-SET7 antibody (ab111691)

Please note: All products are "FOR RESEARCH USE ONLY. NOT FOR USE IN DIAGNOSTIC PROCEDURES"

Our Abpromise to you: Quality guaranteed and expert technical support

- Replacement or refund for products not performing as stated on the datasheet
- Valid for 12 months from date of delivery
- Response to your inquiry within 24 hours
- We provide support in Chinese, English, French, German, Japanese and Spanish
- Extensive multi-media technical resources to help you
- We investigate all quality concerns to ensure our products perform to the highest standards

If the product does not perform as described on this datasheet, we will offer a refund or replacement. For full details of the Abpromise, please visit <https://www.abcam.co.jp/abpromise> or contact our technical team.

Terms and conditions

- Guarantee only valid for products bought direct from Abcam or one of our authorized distributors