


Anti-KMT1A / SUV39H1 antibody [44.1] ab12405

★★★★★ **3 Abreviews** **32 References** 画像数 1

製品の概要

製品名	Anti-KMT1A / SUV39H1 antibody [44.1]
製品の詳細	Mouse monoclonal [44.1] to KMT1A / SUV39H1
由来種	Mouse
アプリケーション	適用あり: WB
種交差性	<p>交差種: Human</p> <p>交差が予測される動物種: Mouse, Rat </p>
免疫原	Recombinant fragment. This information is proprietary to Abcam and/or its suppliers.
エピトープ	ab12405 recognizes an epitope in the N-terminal (195 amino acids) of human KMT1A / SUV39H1.
ポジティブ・コントロール	HCT116, U87-MG and TE671 cell lysates.
特記事項	<p>Storage in frost-free freezers is also not recommended. If slight turbidity occurs upon prolonged storage, clarify the solution by centrifugation before use.</p> <p>This antibody clone is manufactured by Abcam. If you require a custom buffer formulation or conjugation for your experiments, please contact orders@abcam.com.</p> <p>The Life Science industry has been in the grips of a reproducibility crisis for a number of years. Abcam is leading the way in addressing this with our range of recombinant monoclonal antibodies and knockout edited cell lines for gold-standard validation. Please check that this product meets your needs before purchasing.</p> <p>If you have any questions, special requirements or concerns, please send us an inquiry and/or contact our Support team ahead of purchase. Recommended alternatives for this product can be found below, along with publications, customer reviews and Q&As</p>

製品の特性

製品の状態	Liquid
保存方法	Shipped at 4°C. Store at +4°C short term (1-2 weeks). Upon delivery aliquot. Store at -20°C. Avoid freeze / thaw cycle.
バッファー	<p>pH: 7.40</p> <p>Preservative: 0.02% Sodium azide</p> <p>Constituents: PBS, 6.97% L-Arginine</p>

精製度	Protein G purified
ポリ/モノ	モノクローナル
クローン名	44.1
アイソタイプ	IgG1

アプリケーション

The Abpromise guarantee **Abpromise保証は、次のテスト済みアプリケーションにおけるab12405の使用に適用されます**

アプリケーションノートには、推奨の開始希釈率がありますが、適切な希釈率につきましてはご検討ください。

アプリケーション	Abreviews	特記事項
WB	★★★★★ (1)	<p>Use a concentration of 1 - 5 µg/ml. Predicted molecular weight: 48 kDa.</p> <p>The target may be expressed at low levels and we would recommend a highly enriched nuclear extract as a sample for WB. Additionally, a signal amplification step using a biotin conjugate as a secondary antibody is preferable over the enzyme conjugated secondary antibody method.</p>

ターゲット情報

機能	<p>Histone methyltransferase that specifically trimethylates 'Lys-9' of histone H3 using monomethylated H3 'Lys-9' as substrate. Also weakly methylates histone H1 (in vitro). H3 'Lys-9' trimethylation represents a specific tag for epigenetic transcriptional repression by recruiting HP1 (CBX1, CBX3 and/or CBX5) proteins to methylated histones. Mainly functions in heterochromatin regions, thereby playing a central role in the establishment of constitutive heterochromatin at pericentric and telomere regions. H3 'Lys-9' trimethylation is also required to direct DNA methylation at pericentric repeats. SUV39H1 is targeted to histone H3 via its interaction with RB1 and is involved in many processes, such as repression of MYOD1-stimulated differentiation, regulation of the control switch for exiting the cell cycle and entering differentiation, repression by the PML-RARA fusion protein, BMP-induced repression, repression of switch recombination to IgA and regulation of telomere length. Component of the eNoSC (energy-dependent nucleolar silencing) complex, a complex that mediates silencing of rDNA in response to intracellular energy status and acts by recruiting histone-modifying enzymes. The eNoSC complex is able to sense the energy status of cell: upon glucose starvation, elevation of NAD(+)/NADP(+) ratio activates SIRT1, leading to histone H3 deacetylation followed by dimethylation of H3 at 'Lys-9' (H3K9me2) by SUV39H1 and the formation of silent chromatin in the rDNA locus. Recruited by the large PER complex to the E-box elements of the circadian target genes such as PER2 itself or PER1, contributes to the conversion of local chromatin to a heterochromatin-like repressive state through H3 'Lys-9' trimethylation.</p>
----	---

配列類似性	<p>Belongs to the class V-like SAM-binding methyltransferase superfamily. Histone-lysine methyltransferase family. Suvar3-9 subfamily.</p> <p>Contains 1 chromo domain.</p> <p>Contains 1 post-SET domain.</p> <p>Contains 1 pre-SET domain.</p> <p>Contains 1 SET domain.</p>
-------	--

発生段階	Accumulates during mitosis at centromeres during prometaphase, but dissociates from the
------	---

centromere at the meta- to anaphase transition.

ドメイン

Although the SET domain contains the active site of enzymatic activity, both pre-SET and post-SET domains are required for methyltransferase activity. The SET domain also participates to stable binding to heterochromatin.

In the pre-SET domain, Cys residues bind 3 zinc ions that are arranged in a triangular cluster; some of these Cys residues contribute to the binding of two zinc ions within the cluster.

翻訳後修飾

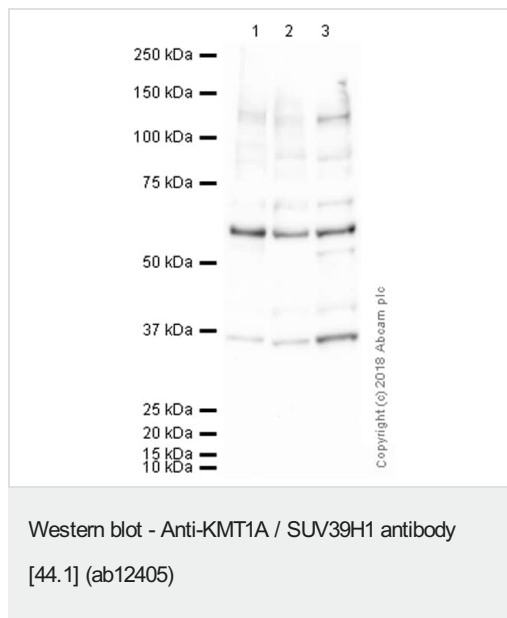
Phosphorylated on serine residues, and to a lesser degree, on threonine residues. The phosphorylated form is stabilized by SBF1 and is less active in its transcriptional repressor function.

Acetylated at Lys-266, leading to inhibition of enzyme activity. SIRT1-mediated deacetylation relieves this inhibition.

細胞内局在

Nucleus. Nucleus lamina. Nucleus, nucleoplasm. Chromosome, centromere. Associates with centromeric constitutive heterochromatin.

画像



All lanes : Anti-KMT1A / SUV39H1 antibody [44.1] (ab12405) at 5 µg

Lane 1 : HCT 116 (Human Colorectal Carcinoma) Whole Cell Lysate

Lane 2 : U-87 MG (Human glioblastoma astrocytoma) Whole Cell Lysate

Lane 3 : TE 671 (Human Rhabdomyosarcoma) Whole Cell Lysate

Lysates/proteins at 20 µg per lane.

Secondary

All lanes : Goat polyclonal to Mouse IgG - H&L - Pre-Adsorbed (HRP) ([ab65485](#)) at 1/5000 dilution

Developed using the ECL technique.

Performed under reducing conditions.

Predicted band size: 48 kDa

Observed band size: 60 kDa

Additional bands at: 36 kDa. We are unsure as to the identity of these extra bands.

Exposure time: 4 minutes

This blot was produced using a 4-12% Bis-tris gel under the MOPS

buffer system. The gel was run at 200V for 50 minutes before being transferred onto a Nitrocellulose membrane at 30V for 70 minutes. The membrane was then blocked for an hour using 2% Bovine Serum Albumin before being incubated with ab12405 overnight at 4°C. Antibody binding was detected using an anti-rabbit antibody conjugated to HRP, and visualised using ECL development solution **ab133406**

Please note: All products are "FOR RESEARCH USE ONLY. NOT FOR USE IN DIAGNOSTIC PROCEDURES"

Our Abpromise to you: Quality guaranteed and expert technical support

- Replacement or refund for products not performing as stated on the datasheet
- Valid for 12 months from date of delivery
- Response to your inquiry within 24 hours
- We provide support in Chinese, English, French, German, Japanese and Spanish
- Extensive multi-media technical resources to help you
- We investigate all quality concerns to ensure our products perform to the highest standards

If the product does not perform as described on this datasheet, we will offer a refund or replacement. For full details of the Abpromise, please visit <https://www.abcam.co.jp/abpromise> or contact our technical team.

Terms and conditions

- Guarantee only valid for products bought direct from Abcam or one of our authorized distributors