

### Anti-KLF4 antibody ab106629

★★★★★ [4 Abreviews](#) [39 References](#) [画像数 2](#)

#### 製品の概要

製品名	Anti-KLF4 antibody
製品の詳細	Rabbit polyclonal to KLF4
由来種	Rabbit
特異性	ab106629 will detect all three known isoforms. It does not cross-react with other KLF members.
アプリケーション	<b>適用あり:</b> IHC-P, WB
種交差性	<b>交差種:</b> Human
免疫原	Synthetic peptide corresponding to Human KLF4 (C terminal). 20 amino acid synthetic peptide located near the c-terminus. Database link: <a href="#">O43474</a>
特記事項	For information on sample preparation for western blot, please refer <a href="#">here</a> .  The Life Science industry has been in the grips of a reproducibility crisis for a number of years. Abcam is leading the way in addressing this with our range of recombinant monoclonal antibodies and knockout edited cell lines for gold-standard validation. Please check that this product meets your needs before purchasing.  If you have any questions, special requirements or concerns, please send us an inquiry and/or contact our Support team ahead of purchase. Recommended alternatives for this product can be found below, along with publications, customer reviews and Q&As

#### 製品の特性

製品の状態	Liquid
保存方法	Shipped at 4°C. Store at 4°C (stable for up to 12 months).
バッファー	pH: 7.2 Preservative: 0.02% Sodium azide Constituent: PBS
精製度	Immunogen affinity purified
特記事項(精製)	ab106629 is purified by affinity chromatography via a peptide column.
ポリ/モノ	ポリクローナル
アイソタイプ	IgG

## アプリケーション

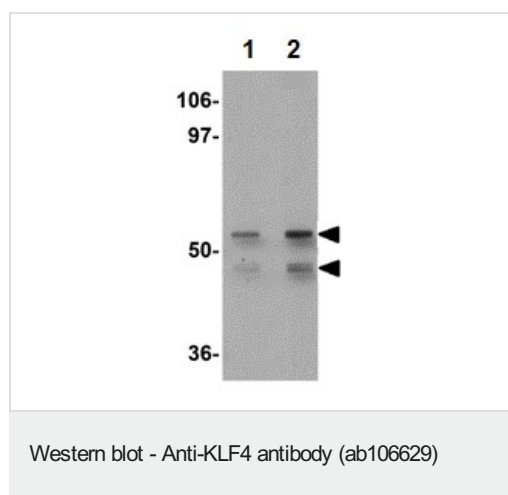
**The Abpromise guarantee**      **Abpromise保証は、** 次のテスト済みアプリケーションにおけるab106629の使用に適用されます  
アプリケーションノートには、推奨の開始希釈率がありますが、適切な希釈率につきましてはご検討ください。

アプリケーション	Abreviews	特記事項
IHC-P		Use a concentration of 5 µg/ml.
WB	★★★★★ (1)	Use a concentration of 1 - 2 µg/ml. Predicted molecular weight: 55 kDa.

## ターゲット情報

機能	Transcription factor; can act both as activator and as repressor. Binds the 5'-CACCC-3' core sequence. Binds to the promoter region of its own gene and can activate its own transcription. Regulates the expression of key transcription factors during embryonic development. Plays an important role in maintaining embryonic stem cells, and in preventing their differentiation. Required for establishing the barrier function of the skin and for postnatal maturation and maintenance of the ocular surface. Involved in the differentiation of epithelial cells and may also function in skeletal and kidney development. Contributes to the down-regulation of p53/TP53 transcription.
配列類似性	Belongs to the krueppel C2H2-type zinc-finger protein family. Contains 3 C2H2-type zinc fingers.
ドメイン	the 9aaTAD motif is a transactivation domain present in a large number of yeast and animal transcription factors.
細胞内局在	Nucleus.

## 画像



**Lane 1 :** Anti-KLF4 antibody (ab106629) at 1 µg/ml

**Lane 2 :** Anti-KLF4 antibody (ab106629) at 2 µg/ml

**All lanes :** Human liver tissue lysate (7.5 µL (2 mg/mL) per well)

Lysates/proteins at 15 µg per lane.

### Secondary

**All lanes :** anti-rabbit IgG-HRP conjugated secondary at 1/10000 dilution

Developed using the ECL technique.

**Predicted band size:** 55 kDa

**Exposure time:** 30 seconds

Run in running buffer at 130V for 2hours(or until the dye front is close to the bottom);

Transfer the proteins to the membrane at 250mA in transfer buffer for 2hours.

After transfer, wash membrane in 1xTBST.

Incubate the membrane with blocking buffer overnight at 4°C with gentle agitation.

Dilute ab106629 to recommended dilution in 10mL of blocking buffer. Incubate membrane with ab106629 overnight at 4°C. Wash 3 times x 10 minutes in washing buffer with gentle agitation.

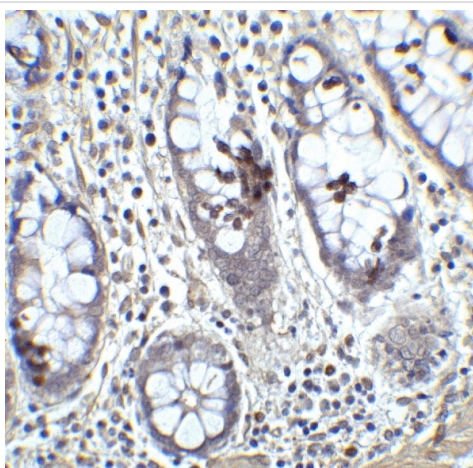
Dilute 1µL anti-rabbit IgG-HRP conjugated secondary in 10mL of blocking buffer to make a 1:10,000 dilution (can vary from 1:2,000 to 1:10,000). Incubate membrane for 1 hour at room temperature. Wash 3 times x 10 minutes in washing buffer with gentle agitation.

Running Buffer: 25mM Tris, 192 mM Glycine, 0.1% SDS.

Transfer Buffer: 20mM Tris, 150mM Glycine, 20% Methanol, 0.038% SDS.

Blocking Buffer: 5% non-fat dry milk, TBS.

Wash Buffer (TBST): 125 mM NaCl, 25mM Tris pH 8.0, 0.1% Tween-20.



Immunohistochemistry (Formalin/PFA-fixed paraffin-embedded sections) - Anti-KLF4 antibody (ab106629)

Immunohistochemical analysis of paraffin-embedded human colon tissue labeling KLF4 with ab106629 at 5 µg/mL. Antigen Retrieval: Use Citrate buffer antigen retrieval using a microwave. Endogenous peroxide blocking with 3% H<sub>2</sub>O<sub>2</sub>. Blocking with 5% BSA at room temperature for 30 minutes. ab106629 incubation at 4°C overnight. Secondary antibody incubation at room temperature for 30 minutes. Washing 3 times for 5 minutes using phosphate buffered saline. Detection using DAB.

### **Our Abpromise to you: Quality guaranteed and expert technical support**

---

- Replacement or refund for products not performing as stated on the datasheet
- Valid for 12 months from date of delivery
- Response to your inquiry within 24 hours
  
- We provide support in Chinese, English, French, German, Japanese and Spanish
- Extensive multi-media technical resources to help you
- We investigate all quality concerns to ensure our products perform to the highest standards

If the product does not perform as described on this datasheet, we will offer a refund or replacement. For full details of the Abpromise, please visit <https://www.abcam.co.jp/abpromise> or contact our technical team.

### **Terms and conditions**

---

- Guarantee only valid for products bought direct from Abcam or one of our authorized distributors