




### Anti-KLF15 antibody ab2647

★★★★★ **1 Abreviews** **20 References** 画像数 1

#### 製品の概要

製品名	Anti-KLF15 antibody
製品の詳細	Goat polyclonal to KLF15
由来種	Goat
アプリケーション	適用あり: IP, WB, IHC-P
種交差性	交差種: Human 交差が予測される動物種: Mouse, Rat, Pig 
免疫原	Synthetic peptide within Human KLF15 aa 1-100 (N terminal) (Cysteine residue). The exact immunogen sequence used to generate this antibody is proprietary information. If additional detail on the immunogen is needed to determine the suitability of the antibody for your needs, please <b><u>contact</u></b> our Scientific Support team to discuss your requirements.
特記事項	<p> <b><u>Run BLAST with</u></b>  <b><u>Run BLAST with</u></b></p> <p>Principal Names – KLF15; Kruppel-like factor 15; KKLF; KKLF protein; kidney-enriched Kruppel-like factor Official Gene Symbol - KLF15 GenBank Accession Number – NP_054798 LocusLink ID - 28999 (human); 66277 (mouse); 85497 (rat)</p> <p>We no longer guarantee this product for mouse because of recent complaints. The immunogen however shares 92% sequence homology with mouse so we still predict the antibody will cross-react. We will welcome any feedback from customers.</p> <p>The Life Science industry has been in the grips of a reproducibility crisis for a number of years. Abcam is leading the way in addressing this with our range of recombinant monoclonal antibodies and knockout edited cell lines for gold-standard validation. Please check that this product meets your needs before purchasing.</p> <p>If you have any questions, special requirements or concerns, please send us an inquiry and/or contact our Support team ahead of purchase. Recommended alternatives for this product can be found below, along with publications, customer reviews and Q&amp;As</p>

#### 製品の特性

製品の状態	Liquid
保存方法	Shipped at 4°C. Upon delivery aliquot and store at -20°C or -80°C. Avoid repeated freeze / thaw cycles.

バッファー	pH: 7.30 Preservative: 0.02% Sodium azide Constituents: Tris buffered saline, 0.5% BSA
精製度	Immunogen affinity purified
特記事項 (精製)	Purified from goat serum by ammonium sulphate precipitation followed by antigen affinity chromatography using the immunizing peptide.
ポリ/モノ	ポリクローナル
アイソタイプ	IgG

## アプリケーション

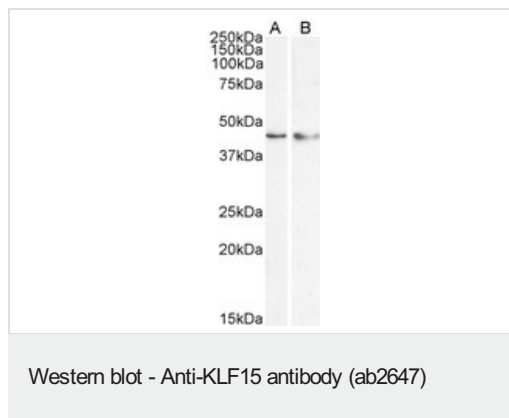
**The Abpromise guarantee**      **Abpromise保証は、** 次のテスト済みアプリケーションにおけるab2647の使用に適用されます  
アプリケーションノートには、推奨の開始希釈率がありますが、適切な希釈率につきましてはご検討ください。

アプリケーション	Abreviews	特記事項
IP		Use at an assay dependent concentration. PubMed: 24407292
WB		Use a concentration of 0.5 - 1.5 µg/ml. Detects a band of approximately 45 kDa (predicted molecular weight: 44 kDa). A 1 hour primary incubation is recommended for this product. Approx 48kDa band observed in lysates of hepatoblastoma cell line HepG2 (calculated MW of 44.0kDa according to NP_054798.1). Older batches detected a band of approximately 65 kDa in Human Liver lysate(predicted molecular weight: 46
IHC-P		Use at an assay dependent concentration. PubMed: 26378916

## ターゲット情報

機能	Transcriptional activator. Binds to the GA element of the CLCNKA promoter.
組織特異性	Highly expressed in liver, followed by heart, skeletal muscle, and kidney. Not expressed in bone marrow or lymphoid tissues.
配列類似性	Belongs to the Sp1 C2H2-type zinc-finger protein family. Contains 3 C2H2-type zinc fingers.
細胞内局在	Nucleus.

## 画像



**Lane 1 :** Anti-KLF15 antibody (ab2647) at 1 µg/ml

**Lane 2 :** Anti-KLF15 antibody (ab2647) at 0.5 µg/ml

**Lane 1 :** HepG2 nuclear lysate

**Lane 2 :** HeLa cell lysate

Lysates/proteins at 35 µg per lane.

**Predicted band size:** 44 kDa

**Please note:** All products are "FOR RESEARCH USE ONLY. NOT FOR USE IN DIAGNOSTIC PROCEDURES"

### Our Abpromise to you: Quality guaranteed and expert technical support

- Replacement or refund for products not performing as stated on the datasheet
- Valid for 12 months from date of delivery
- Response to your inquiry within 24 hours
- We provide support in Chinese, English, French, German, Japanese and Spanish
- Extensive multi-media technical resources to help you
- We investigate all quality concerns to ensure our products perform to the highest standards

If the product does not perform as described on this datasheet, we will offer a refund or replacement. For full details of the Abpromise, please visit <https://www.abcam.co.jp/abpromise> or contact our technical team.

### Terms and conditions

- Guarantee only valid for products bought direct from Abcam or one of our authorized distributors