


### Anti-KLF10 antibody ab73537

★★★★☆ **2 Abreviews** **7 References** 画像数 1

#### 製品の概要

製品名	Anti-KLF10 antibody
製品の詳細	Rabbit polyclonal to KLF10
由来種	Rabbit
アプリケーション	<b>適用あり:</b> WB
種交差性	<b>交差種:</b> Mouse, Rat, Human <b>交差が予測される動物種:</b> Cow, Non human primates 
免疫原	Synthetic peptide conjugated to KLH derived from within residues 450 to the C-terminus of Human KLF10.Immunogen の所有権に関して(Peptide available as <a href="#">ab73859</a> .)
ポジティブ・コントロール	This antibody gave a positive signal in the following lysates: Jurkat Whole Cell; Ramos Whole Cell; Human Skeletal Muscle Tissue; Human Brain Tissue; Mouse Liver Tissue; Mouse Testis Tissue and Rat Thymus Tissue.
特記事項	<p>The Life Science industry has been in the grips of a reproducibility crisis for a number of years. Abcam is leading the way in addressing this with our range of recombinant monoclonal antibodies and knockout edited cell lines for gold-standard validation. Please check that this product meets your needs before purchasing.</p> <p>If you have any questions, special requirements or concerns, please send us an inquiry and/or contact our Support team ahead of purchase. Recommended alternatives for this product can be found below, along with publications, customer reviews and Q&amp;As</p>

#### 製品の特性

製品の状態	Liquid
保存方法	Shipped at 4°C. Store at +4°C short term (1-2 weeks). Upon delivery aliquot. Store at -20°C or -80°C. Avoid freeze / thaw cycle.
バッファー	<p>pH: 7.40</p> <p>Preservative: 0.02% Sodium azide</p> <p>Constituent: PBS</p> <p>Batches of this product that have a concentration &lt; 1mg/ml may have BSA added as a stabilising agent. If you would like information about the formulation of a specific lot, please contact our scientific support team who will be happy to help.</p>

精製度	Immunogen affinity purified
ポリ/モノ	ポリクローナル
アイソタイプ	IgG

## アプリケーション

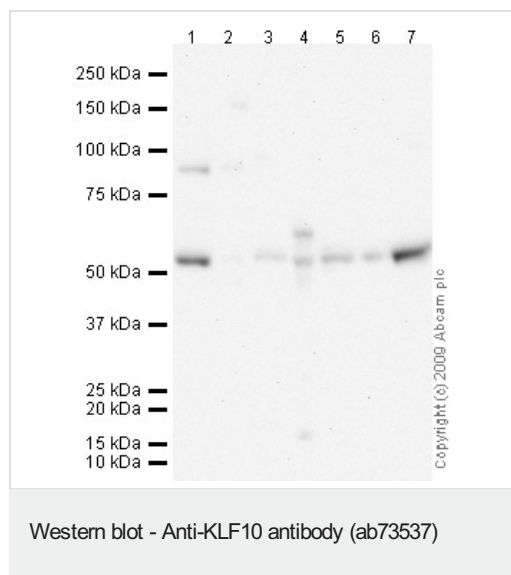
**The Abpromise guarantee** **Abpromise保証は、次のテスト済みアプリケーションにおけるab73537の使用に適用されます**  
 アプリケーションノートには、推奨の開始希釈率がありますが、適切な希釈率につきましてはご検討ください。

アプリケーション	Abreviews	特記事項
WB		Use a concentration of 1 µg/ml. Detects a band of approximately 53 kDa (predicted molecular weight: 53 kDa).

## ターゲット情報

機能	Transcriptional repressor which binds to the consensus sequence 5'-GGTGTG-3'. Plays a role in the regulation of the circadian clock; binds to the GC box sequence in the promoter of the core clock component ARTNL/BMAL1 and represses its transcriptional activity. Regulates the circadian expression of genes involved in lipogenesis, gluconeogenesis, and glycolysis in the liver. Represses the expression of PCK2, a rate-limiting step enzyme of gluconeogenesis (By similarity). May play a role in the cell cycle regulation.
配列類似性	Belongs to the Sp1 C2H2-type zinc-finger protein family. Contains 3 C2H2-type zinc fingers.
翻訳後修飾	Ubiquitinated; mediated by SIAH1 and leading to its subsequent proteasomal degradation.
細胞内局在	Nucleus.

## 画像



**All lanes :** Anti-KLF10 antibody (ab73537) at 1 µg/ml

**Lane 1 :** Jurkat (Human T cell lymphoblast-like cell line) Whole Cell Lysate

**Lane 2 :** Liver (Mouse) Tissue Lysate

**Lane 3 :** Human skeletal muscle tissue lysate - total protein (**ab29330**)

**Lane 4 :** Testis (Mouse) Tissue Lysate

**Lane 5 :** Thymus (Rat) Tissue Lysate

**Lane 6 :** Ramos (Human Burkitt's lymphoma cell line) Whole Cell Lysate

**Lane 7 :** Human brain tissue lysate - total protein (**ab29466**)

Lysates/proteins at 10 µg per lane.

**Secondary**

**All lanes :** Goat polyclonal to Rabbit IgG - H&L - Pre-Adsorbed (HRP) at 1/3000 dilution

Performed under reducing conditions.

**Predicted band size:** 53 kDa

**Observed band size:** 53 kDa

**Additional bands at:** 85 kDa. We are unsure as to the identity of these extra bands.

**Exposure time:** 12 minutes

**Please note:** All products are "FOR RESEARCH USE ONLY. NOT FOR USE IN DIAGNOSTIC PROCEDURES"

**Our Abpromise to you: Quality guaranteed and expert technical support**

---

- Replacement or refund for products not performing as stated on the datasheet
- Valid for 12 months from date of delivery
- Response to your inquiry within 24 hours
- We provide support in Chinese, English, French, German, Japanese and Spanish
- Extensive multi-media technical resources to help you
- We investigate all quality concerns to ensure our products perform to the highest standards

If the product does not perform as described on this datasheet, we will offer a refund or replacement. For full details of the Abpromise, please visit <https://www.abcam.co.jp/abpromise> or contact our technical team.

**Terms and conditions**

---

- Guarantee only valid for products bought direct from Abcam or one of our authorized distributors