


Anti-KLC1 antibody [EPR12441(B)] ab174273

KO 評価済 リコンビナント RabMAb

★★★★★ [2 Abreviews](#) [6 References](#) [画像数 8](#)

製品の概要

製品名	Anti-KLC1 antibody [EPR12441(B)]
製品の詳細	Rabbit monoclonal [EPR12441(B)] to KLC1
由来種	Rabbit
アプリケーション	適用あり: Flow Cyt (Intra), WB, IHC-P, ICC/IF, IP
種交差性	交差種: Human 交差が予測される動物種: Mouse, Rat 
免疫原	Synthetic peptide. This information is proprietary to Abcam and/or its suppliers.
ポジティブ・コントロール	U87-MG, 293T, SH-SY5Y, and HeLa whole cell lysate (ab150035); Human brain tissue; U87-MG and HeLa cells.
特記事項	<p>This product is a recombinant monoclonal antibody, which offers several advantages including:</p> <ul style="list-style-type: none">- High batch-to-batch consistency and reproducibility- Improved sensitivity and specificity- Long-term security of supply- Animal-free production <p>For more information see here.</p> <p>Our RabMAb[®] technology is a patented hybridoma-based technology for making rabbit monoclonal antibodies. For details on our patents, please refer to RabMAb[®] patents.</p>

製品の特性

製品の状態	Liquid
保存方法	Shipped at 4°C. Store at +4°C short term (1-2 weeks). Upon delivery aliquot. Store at -20°C long term. Avoid freeze / thaw cycle.
バッファー	pH: 7.20 Preservative: 0.01% Sodium azide Constituents: 9% PBS, 40% Glycerol (glycerin, glycerine), 0.05% BSA, 50% Tissue culture supernatant
精製度	Protein A purified
ポリ/モノ	モノクローナル

クローン名 EPR12441(B)
アイソタイプ IgG

アプリケーション

The Abpromise guarantee **Abpromise保証は、** 次のテスト済みアプリケーションにおけるab174273の使用に適用されます
アプリケーションノートには、推奨の開始希釈率がありますが、適切な希釈率につきましてはご検討ください。

アプリケーション	Abreviews	特記事項
Flow Cyt (Intra)		1/10 - 1/100. ab172730 - Rabbit monoclonal IgG, is suitable for use as an isotype control with this antibody.
WB	★★★★★ (1)	1/1000 - 1/10000. Detects a band of approximately 61-70 kDa (predicted molecular weight: 65 kDa).
IHC-P		1/50 - 1/100. Perform heat mediated antigen retrieval before commencing with IHC staining protocol.
ICC/IF		1/50 - 1/500.
IP		1/10 - 1/100.

ターゲット情報

機能 Kinesin is a microtubule-associated force-producing protein that may play a role in organelle transport. The light chain may function in coupling of cargo to the heavy chain or in the modulation of its ATPase activity.

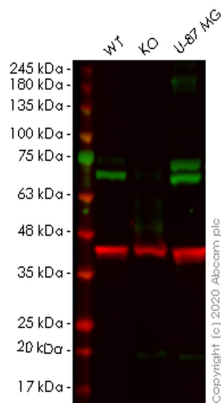
組織特異性 Found in a variety of tissues. Mostly abundant in brain and spine.

配列類似性 Belongs to the kinesin light chain family.
Contains 6 TPR repeats.

翻訳後修飾 Isoform I is phosphorylated on Ser-600. Isoform J is phosphorylated on Ser-631.

細胞内局在 Cytoplasm > cytoskeleton.

画像



Western blot - Anti-KLC1 antibody [EPR12441(B)] (ab174273)

All lanes : Anti-KLC1 antibody [EPR12441(B)] (ab174273) at 1/1000 dilution

Lane 1 : Wild-type HeLa cell lysate

Lane 2 : KLC1 knockout HeLa cell lysate

Lane 3 : U-87 MG cell lysate

Lysates/proteins at 20 µg per lane.

Secondary

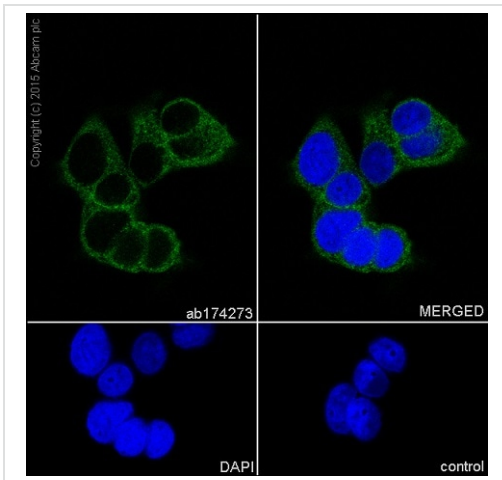
All lanes : Goat anti-Rabbit IgG H&L (IRDye® 800CW) preadsorbed (**ab216773**) at 1/10000 dilution

Predicted band size: 65 kDa

Observed band size: 65 kDa

Lanes 1-3: Merged signal (red and green). Green - ab174273 observed at 65 kDa. Red - loading control **ab8245** observed at 36 kDa.

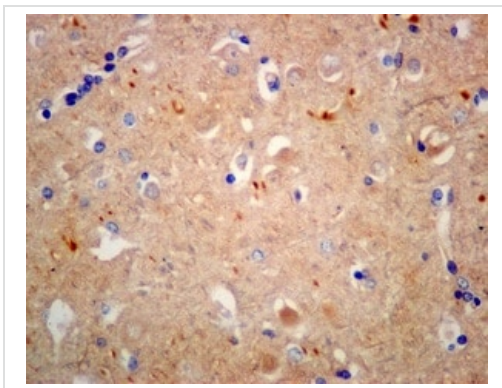
ab174273 Anti-KLC1 antibody [EPR12441(B)] was shown to specifically react with KLC1 in wild-type HeLa cells. Loss of signal was observed when knockout cell line **ab265284** (knockout cell lysate **ab257496**) was used. Wild-type and KLC1 knockout samples were subjected to SDS-PAGE. ab174273 and Anti-GAPDH antibody [6C5] - Loading Control (**ab8245**) were incubated overnight at 4°C at 1 in 1000 dilution and 1 in 20000 dilution respectively. Blots were developed with Goat anti-Rabbit IgG H&L (IRDye® 800CW) preadsorbed (**ab216773**) and Goat anti-Mouse IgG H&L (IRDye® 680RD) preadsorbed (**ab216776**) secondary antibodies at 1 in 20000 dilution for 1 hour at room temperature before imaging.



Immunocytochemistry/ Immunofluorescence - Anti-KLC1 antibody [EPR12441(B)] (ab174273)

Immunocytochemistry/Immunofluorescence analysis of MCF-7 (human breast carcinoma) labelling KLC1 with purified ab174273 at 1/500. Cells were fixed with 100% methanol. An Alexa Fluor[®] 488-conjugated goat anti-rabbit IgG (1/1000) was used as the secondary antibody (Ab150077). Nuclei counterstained with DAPI (blue).

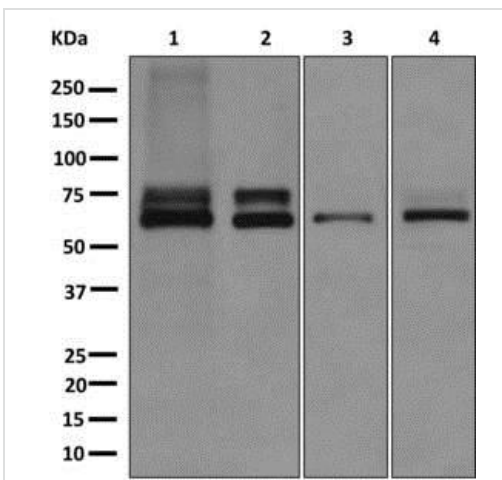
Control: PBS only



Immunohistochemistry (Formalin/PFA-fixed paraffin-embedded sections) - Anti-KLC1 antibody [EPR12441(B)] (ab174273)

Immunohistochemical analysis of paraffin-embedded Human brain tissue labeling KLC1 with ab174273 at 1/50 dilution.

Perform heat mediated antigen retrieval before commencing with IHC staining protocol.



Western blot - Anti-KLC1 antibody [EPR12441(B)] (ab174273)

All lanes : Anti-KLC1 antibody [EPR12441(B)] (ab174273) at 1/1000 dilution

Lane 1 : U87-MG cell lysate

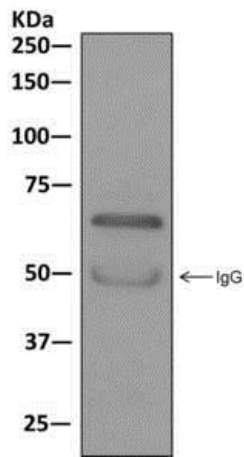
Lane 2 : 293T cell lysate

Lane 3 : SH-SY5Y cell lysate

Lane 4 : HeLa cell lysate

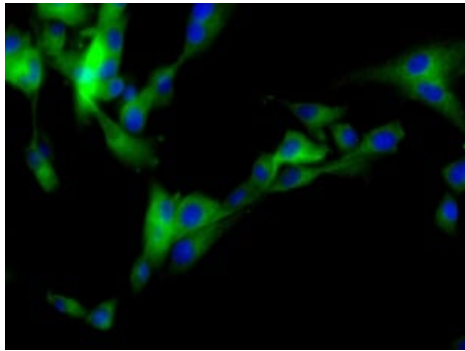
Lysates/proteins at 10 µg per lane.

Predicted band size: 65 kDa



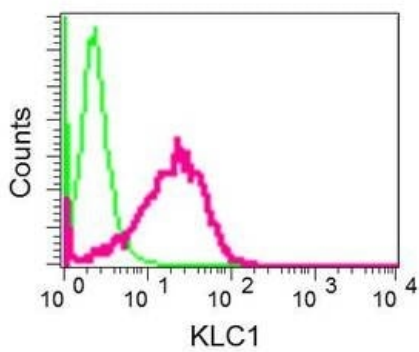
Western blot analysis on immunoprecipitation pellet from SH-SY5Y cell lysate using ab174273 at 1/10 dilution.

Immunoprecipitation - Anti-KLC1 antibody [EPR12441(B)] (ab174273)



Immunofluorescent analysis of U87-MG cells labeling KLC1 with ab174273 at 1/50 dilution.

Immunocytochemistry/ Immunofluorescence - Anti-KLC1 antibody [EPR12441(B)] (ab174273)



Intracellular flow cytometric analysis of permeabilized HeLa cells labeling KLC1 with ab174273 at 1/10 dilution (red) or a rabbit IgG (negative) (green).

Flow Cytometry (Intracellular) - Anti-KLC1 antibody [EPR12441(B)] (ab174273)

Why choose a recombinant antibody?



Research with confidence
Consistent and reproducible results



Long-term and scalable supply
Recombinant technology



Success from the first experiment
Confirmed specificity



Ethical standards compliant
Animal-free production

Anti-KLC1 antibody [EPR12441(B)] (ab174273)

Please note: All products are "FOR RESEARCH USE ONLY. NOT FOR USE IN DIAGNOSTIC PROCEDURES"

Our Abpromise to you: Quality guaranteed and expert technical support

- Replacement or refund for products not performing as stated on the datasheet
- Valid for 12 months from date of delivery
- Response to your inquiry within 24 hours
- We provide support in Chinese, English, French, German, Japanese and Spanish
- Extensive multi-media technical resources to help you
- We investigate all quality concerns to ensure our products perform to the highest standards

If the product does not perform as described on this datasheet, we will offer a refund or replacement. For full details of the Abpromise, please visit <https://www.abcam.co.jp/abpromise> or contact our technical team.

Terms and conditions

- Guarantee only valid for products bought direct from Abcam or one of our authorized distributors