

Anti-KK-LC-1 antibody ab121219

[1 References](#) [画像数 2](#)

製品の概要

製品名	Anti-KK-LC-1 antibody
製品の詳細	Rabbit polyclonal to KK-LC-1
由来種	Rabbit
アプリケーション	適用あり: WB, IHC-P
種交差性	交差種: Human
免疫原	antigen sequence: MNFYLLASS ILCALIVFWK YRRFQRNTGE MSSNSTALAL VRPSSSGLIN SNTDNNLAVY DLSRDILNNF PHSIARQKRI LVNLSMVENK LVELEHTLLS KGFRGASPHR KST, corresponding to C terminal amino acids 25-113 of Human KK-LC-1. Run BLAST with Expasy Run BLAST with NCBI
ポジティブ・コントロール	Human hippocampus tissue; KK-LC-1 over-expression HEK293T lysate.
特記事項	<p>The Life Science industry has been in the grips of a reproducibility crisis for a number of years. Abcam is leading the way in addressing this with our range of recombinant monoclonal antibodies and knockout edited cell lines for gold-standard validation. Please check that this product meets your needs before purchasing.</p> <p>If you have any questions, special requirements or concerns, please send us an inquiry and/or contact our Support team ahead of purchase. Recommended alternatives for this product can be found below, along with publications, customer reviews and Q&As</p>

製品の特性

製品の状態	Liquid
保存方法	Shipped at 4°C. Upon delivery aliquot and store at -20°C. Avoid freeze / thaw cycles.
バッファー	pH: 7.20 Preservative: 0.02% Sodium azide Constituents: 59% PBS, 40% Glycerol
精製度	Immunogen affinity purified
ポリモノ	ポリクローナル
アイソタイプ	IgG

アプリケーション

The Abpromise guarantee

Abpromise保証は、次のテスト済みアプリケーションにおけるab121219の使用に適用されます

アプリケーションノートには、推奨の開始希釈率がありますが、適切な希釈率につきましてはご検討ください。

アプリケーション	Abreviews	特記事項
WB		Use a concentration of 0.04 - 0.4 µg/ml. Predicted molecular weight: 13 kDa.
IHC-P		1/50 - 1/200. Perform heat mediated antigen retrieval with citrate buffer pH 6 before commencing with IHC staining protocol.

ターゲット情報

組織特異性

Specifically expressed in testis. Expressed by cancer cell lines.

細胞内局在

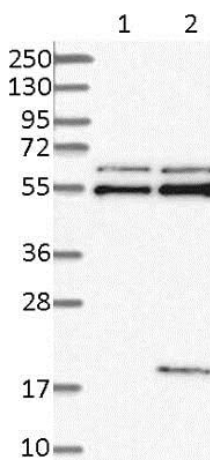
Cell membrane.

画像



ab121219 staining KK-LC-1 in Paraffin-embedded Human hippocampus tissue by Immunohistochemistry.

Immunohistochemistry (Formalin/PFA-fixed paraffin-embedded sections) - Anti-KK-LC-1 antibody (ab121219)



All lanes : Anti-KK-LC-1 antibody (ab121219) at 1/250 dilution

Lane 1 : Negative control (vector only transfected HEK293T lysate)

Lane 2 : Over-expression Lysate (Co-expressed with a C-terminal proprietary tag (~3.1 kDa) in mammalian HEK293T cells)

Developed using the ECL technique.

Predicted band size: 13 kDa

Western blot - Anti-KK-LC-1 antibody (ab121219)

Please note: All products are "FOR RESEARCH USE ONLY. NOT FOR USE IN DIAGNOSTIC PROCEDURES"

Our Abpromise to you: Quality guaranteed and expert technical support

- Replacement or refund for products not performing as stated on the datasheet
- Valid for 12 months from date of delivery
- Response to your inquiry within 24 hours

- We provide support in Chinese, English, French, German, Japanese and Spanish
- Extensive multi-media technical resources to help you
- We investigate all quality concerns to ensure our products perform to the highest standards

If the product does not perform as described on this datasheet, we will offer a refund or replacement. For full details of the Abpromise, please visit <https://www.abcam.co.jp/abpromise> or contact our technical team.

Terms and conditions

- Guarantee only valid for products bought direct from Abcam or one of our authorized distributors